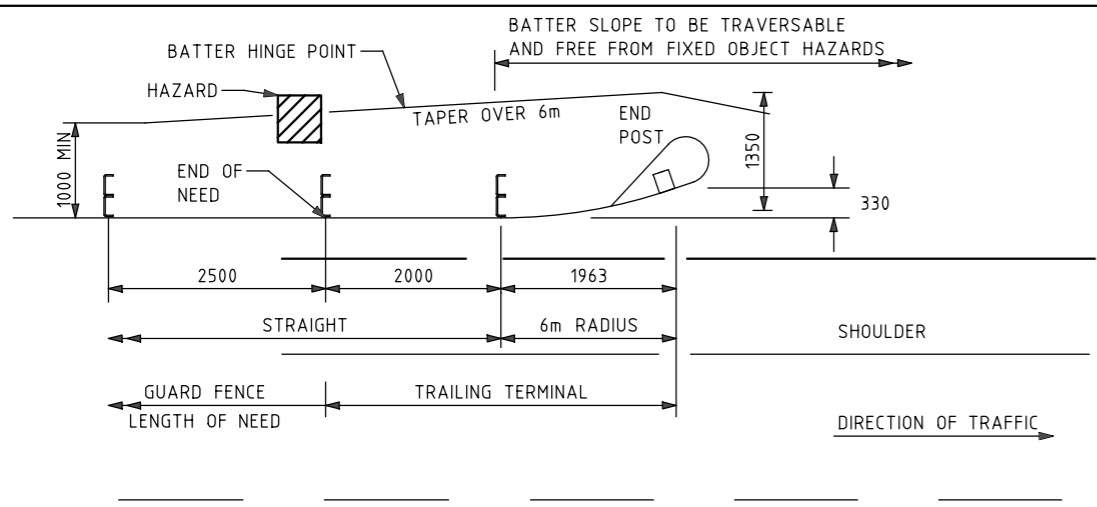
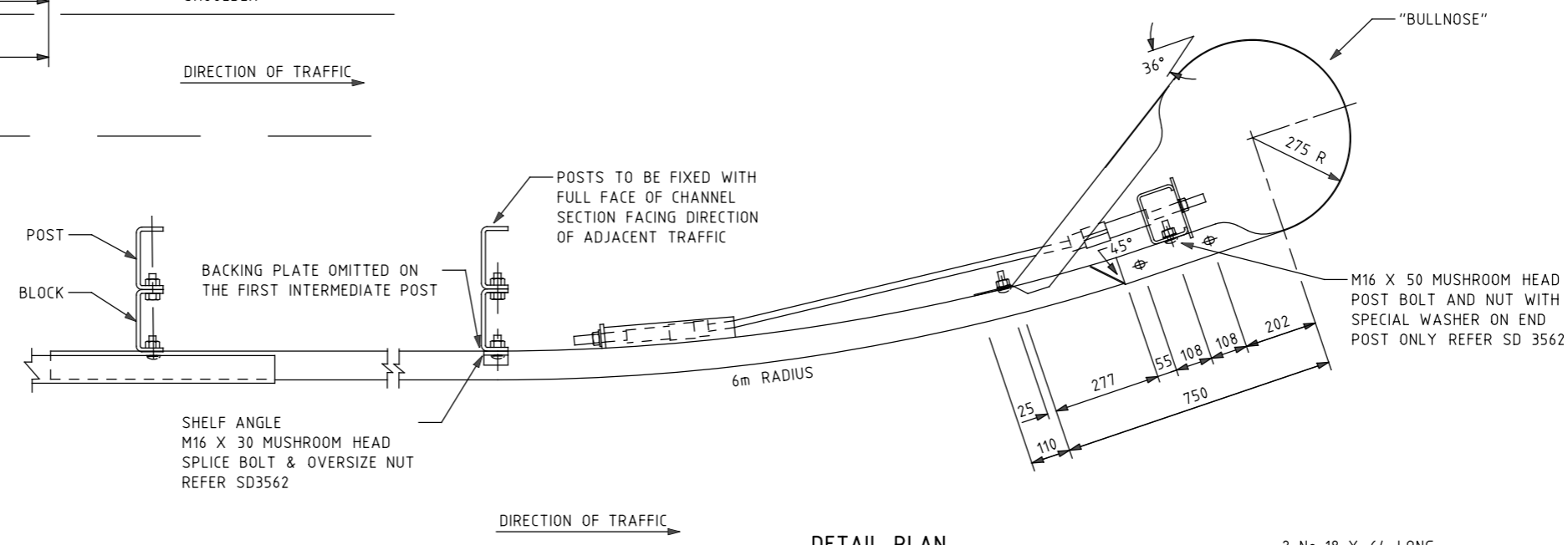


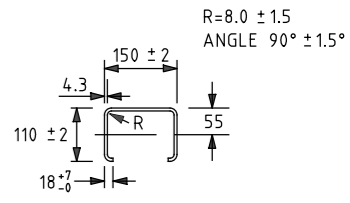
ISSUE	APP'D	DATE	AMENDMENT



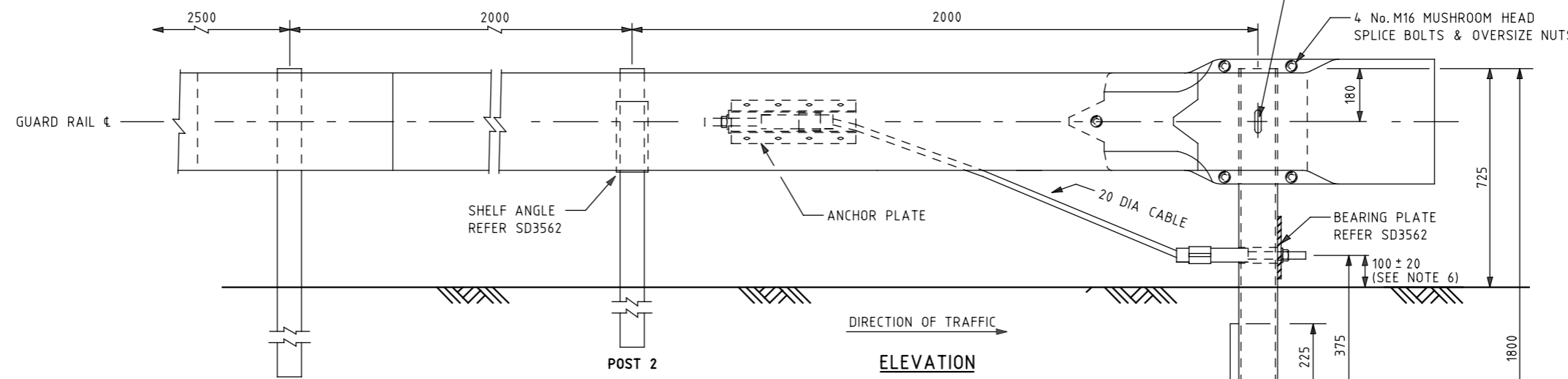
LAYOUT PLAN



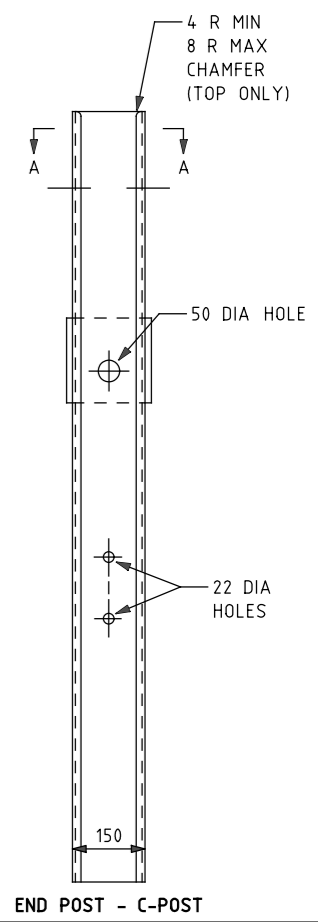
DETAIL PLAN



SECTION A-A



ELEVATION



END POST - C-POST

- NOTES:
- ALL DIMENSIONS ARE IN MILLIMETRES UNLESS SHOWN OTHERWISE
 - THE AGREEMENT OF THE PRINCIPAL ROAD DESIGN ENGINEER SHOULD BE SOUGHT BEFORE MODIFICATIONS ARE MADE TO ANY PART OF THE DESIGN
 - END POST SHALL BE FORMED FROM BMT 4.3 STEEL GRADE HA300 IN ACCORDANCE WITH AS 1594
 - SOIL PLATE, SHELF ANGLE & BEARING PLATE SHALL BE FABRICATED FROM STEEL GRADE 250 IN ACCORDANCE WITH AS 1594
 - BOLTS TO BE SNUG TIGHTENED TO AS4100
 - TRAILING TERMINALS MUST NOT BE LOCATED WITHIN THE CLEAR ZONE OF OPPOSING TRAFFIC. MAY BE CONSIDERED ON APPROACH SIDES ONLY WHEN SHIELDED FROM APPROACH TRAFFIC WITHIN THE LENGTH OF NEED OF ANOTHER BARRIER
 - WHERE THE FACE OF GUARD FENCE IS ERECTED WITHIN 0 TO 1m BEHIND THE BACK OF KERB, THE MOUNTING HEIGHT SHALL BE MEASURED FROM THE ADJACENT ROAD PAVEMENT SURFACE. HOWEVER THE VERTICAL POSITION OF THE DRILLED HOLE & ANCHOR CABLE ASSEMBLY IN THE END POST SHALL BE MEASURED FROM THE GROUND SURFACE

BOLT SCHEDULE FOR END POST OF TRAILING TERMINAL

ANCHOR PLATE AND BULLNOSE	13 No. SPLICE BOLTS WITH OVERSIZE NUTS
END POST	1 No. M16 METRIC MUSHROOM HEAD POST BOLT WITH M16 NUT 1 WASHER & 1 SPECIAL WASHER
ANCHOR CABLE	2 No M24 NUTS AND CUT WASHERS
SOIL PLATE	2 No M20x40 HEX HEAD BOLT 25 MIN LONG THREAD WITH M20 NUT

M20 X 40 LONG HEX BOLTS WITH NUTS REFER SD3562

SOIL PLATE REFER SD3562

END POST - C-POST

REFERENCES AND NOTES:

SD 3562 TRAILING TERMINAL COMPONENT DETAILS
SD 3661 GUARD FENCE (TYPE B) STEEL POST
VR STANDARD SPECIFICATION 708 STEEL BEAM GUARD FENCE

TECHNICAL CONSULTING
3 PROSPECT HILL ROAD
CAMBERWELL
VICTORIA 3124
PHONE (03) 9811 8355
FAX (03) 9811 8329

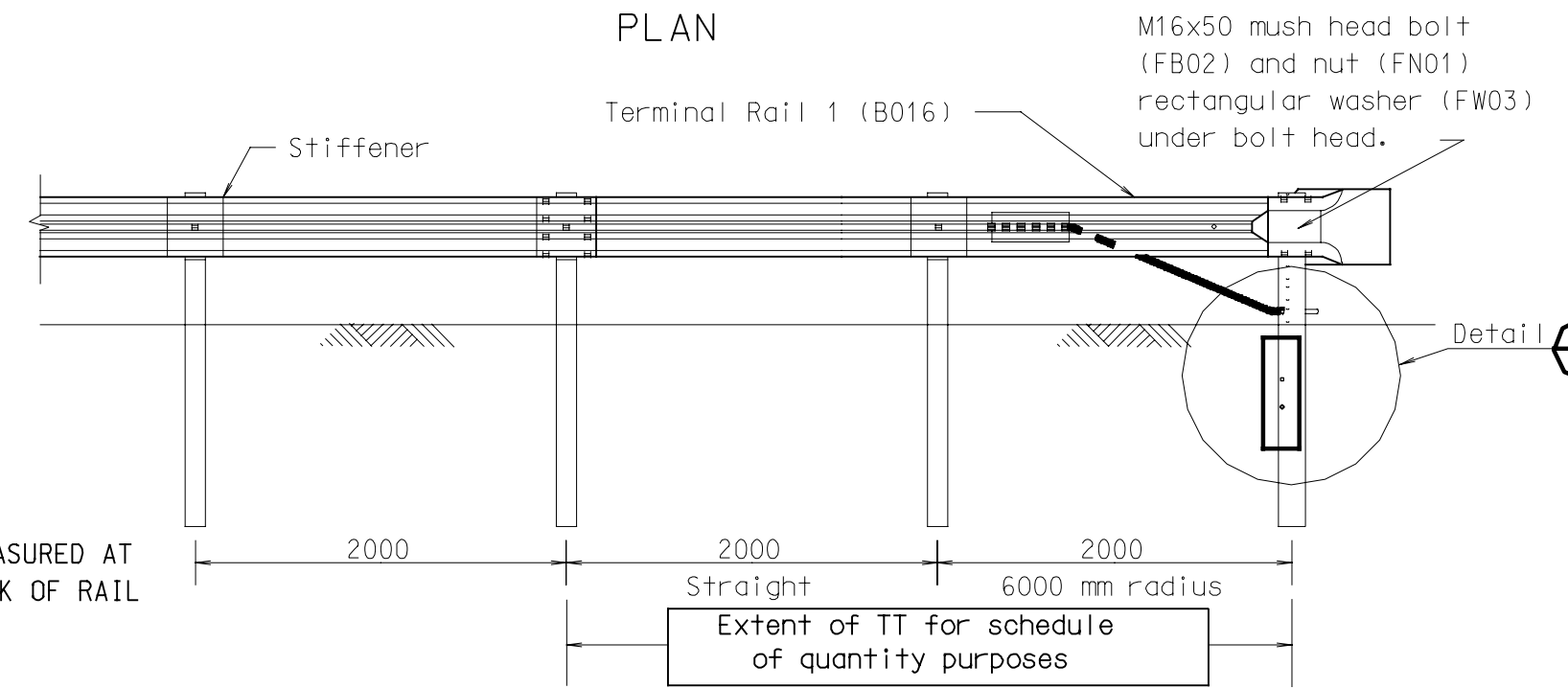
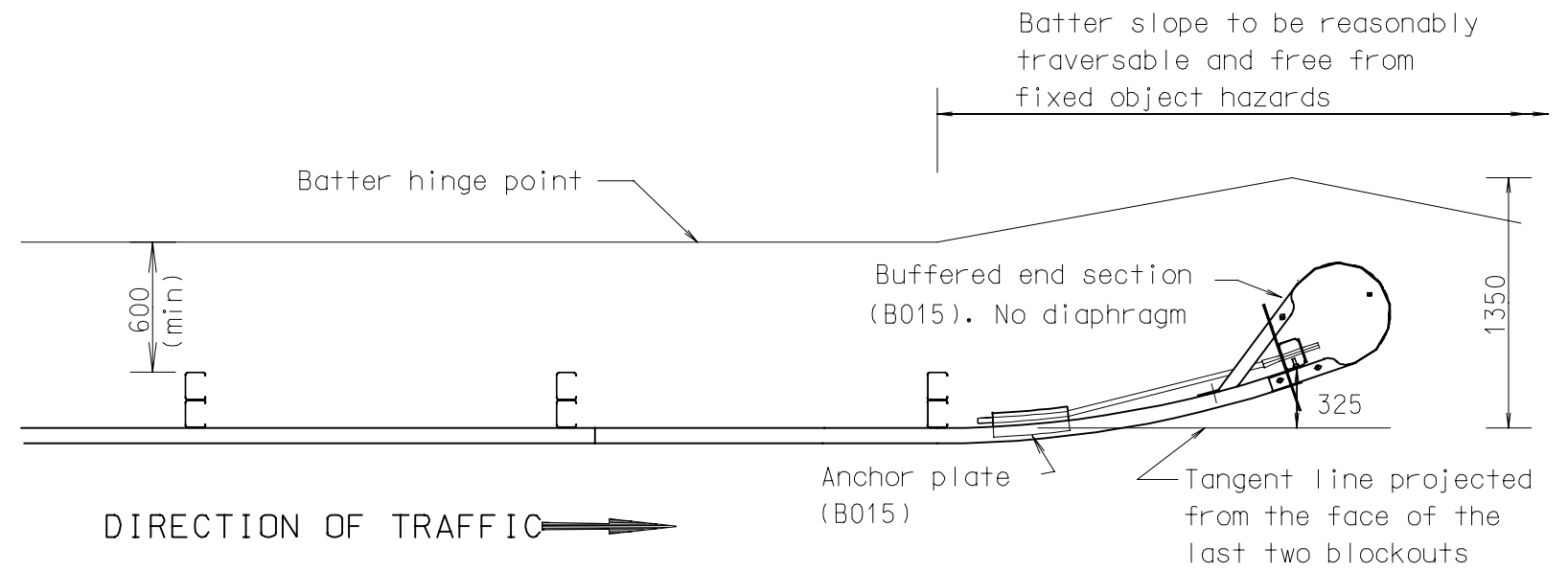
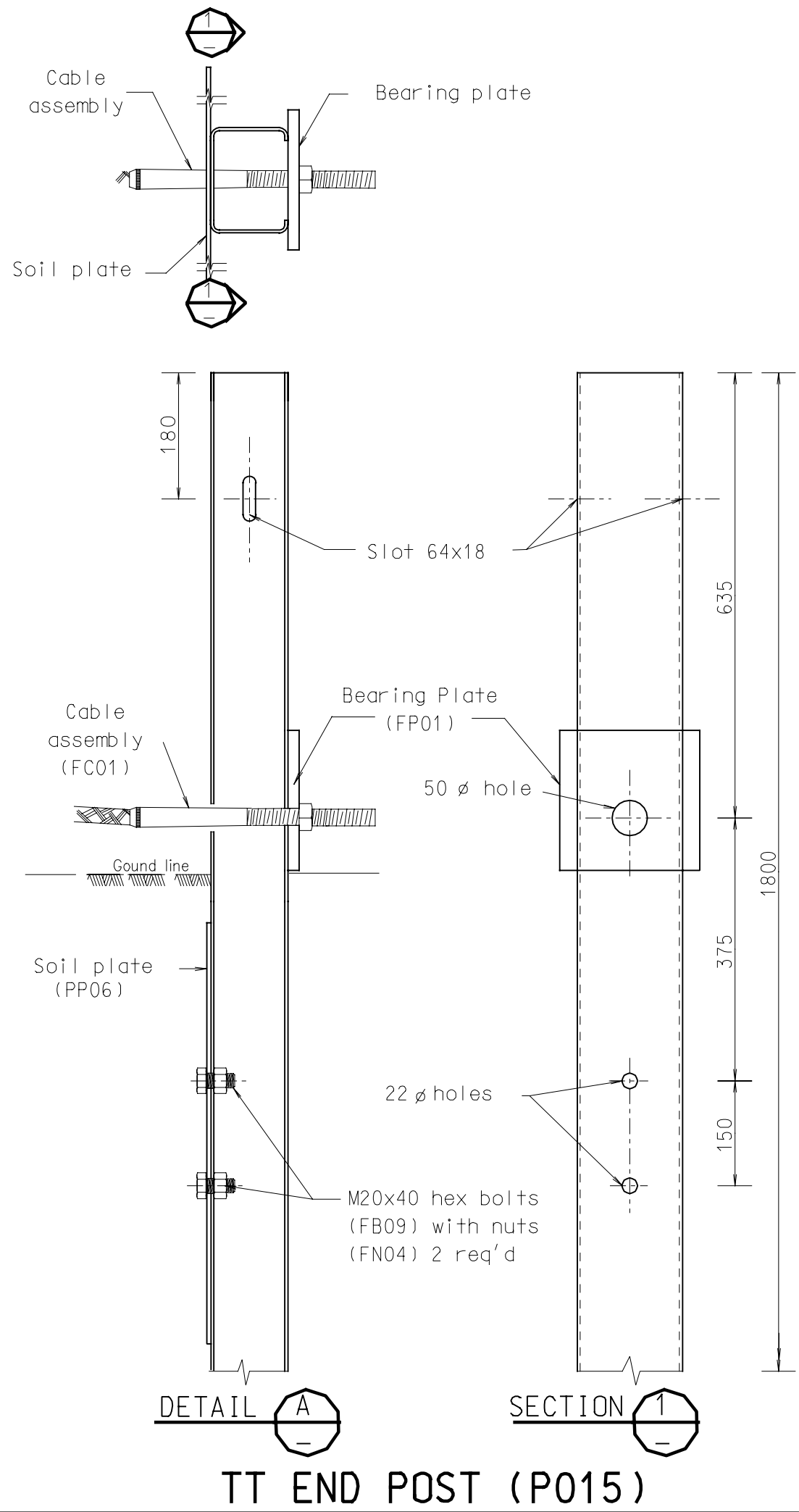


GUARD FENCE & BARRIERS SD 3544

TRAILING TERMINAL
GENERAL ARRANGEMENT

NOT TO SCALE	APPROVED DANIEL CASSAR (PRDE) 18-2-13	DRAWING NO. SD 3544	ISSUE
--------------	--	------------------------	-------

VICROADS REF No 720264



BUFFERED END & ANCHORAGE ASSEMBLY

NOTES:
 Dimensions are in millimetres unless otherwise shown.
 All nuts shall be snug tight to AS 4100.
 Flame cutting of galvanised post and rail is not permitted.
 End Posts (P015) are from 4.3 BMT plate grade HA300 steel to AS 1594, and hot dip galvanised to AS 4680 after fabrication.
 Refer to MD.R132.F06 for end post installation.

TT to be used on departure end of safety barrier only. TT not to be used within clear zone of opposing traffic.

AMENDMENT DETAILS		DATE
AS 4680 & delete shelf angle		Aug 1999
Buffered End Section		Oct 1997
Roads and Traffic Authority NSW		
TRAILING TERMINAL (TT) GENERAL ARRANGEMENT, POST AND ANCHORAGE DETAIL		
SCALE	No. OF SHEETS	SHEET No.
N.T.S.	1	1
DRAWING NUMBER		
MD.RI 32.G03.A.2		

FIRST ISSUED : JULY 1996