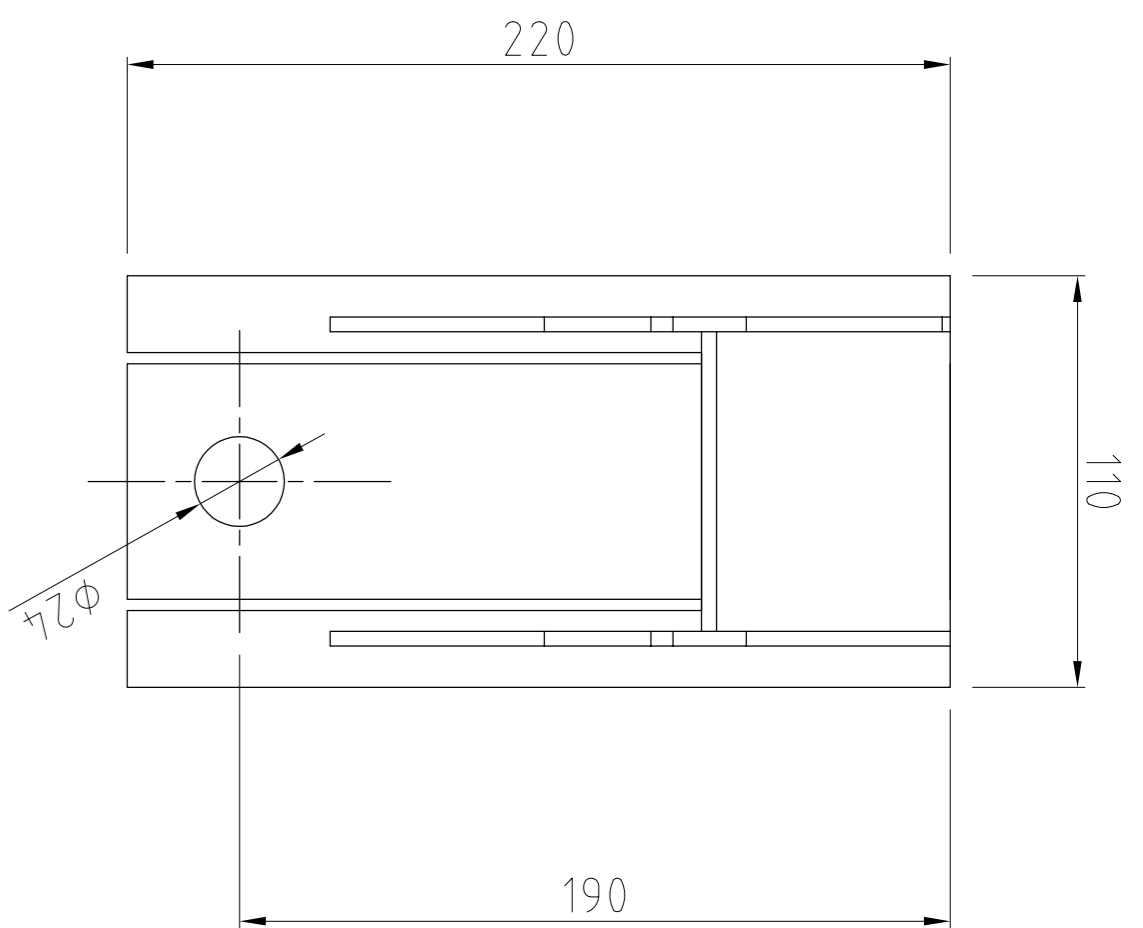
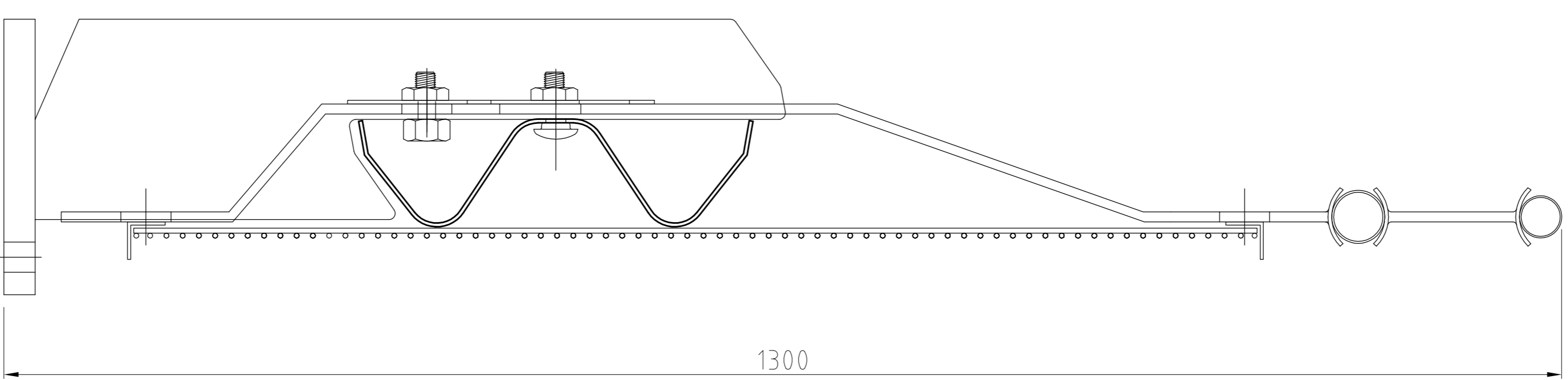
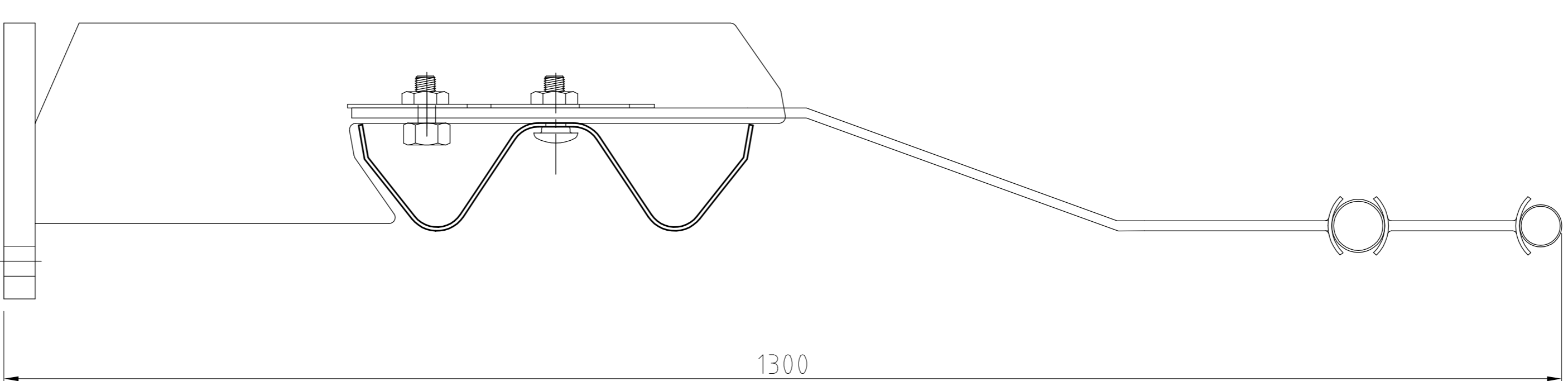
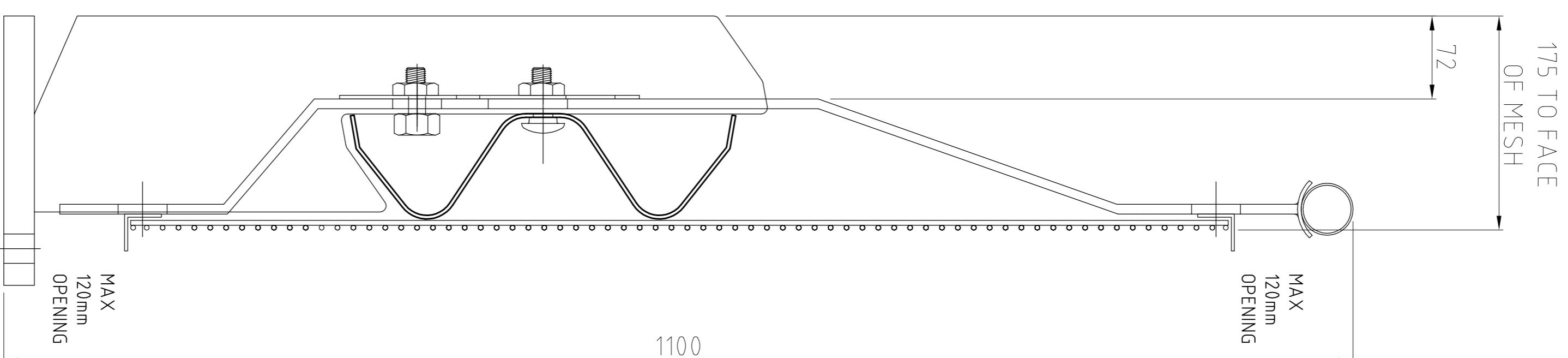
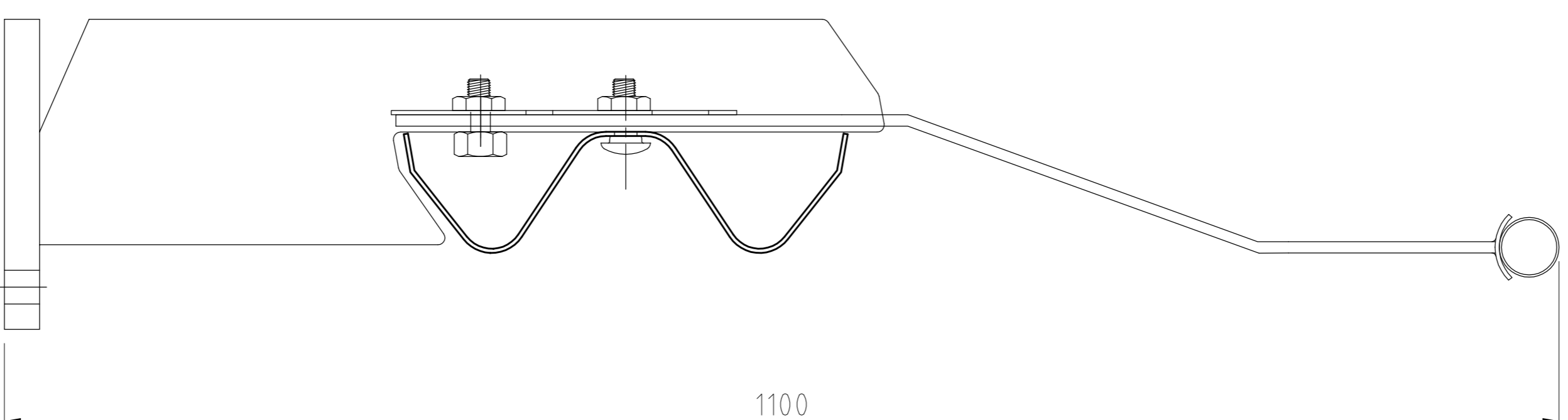
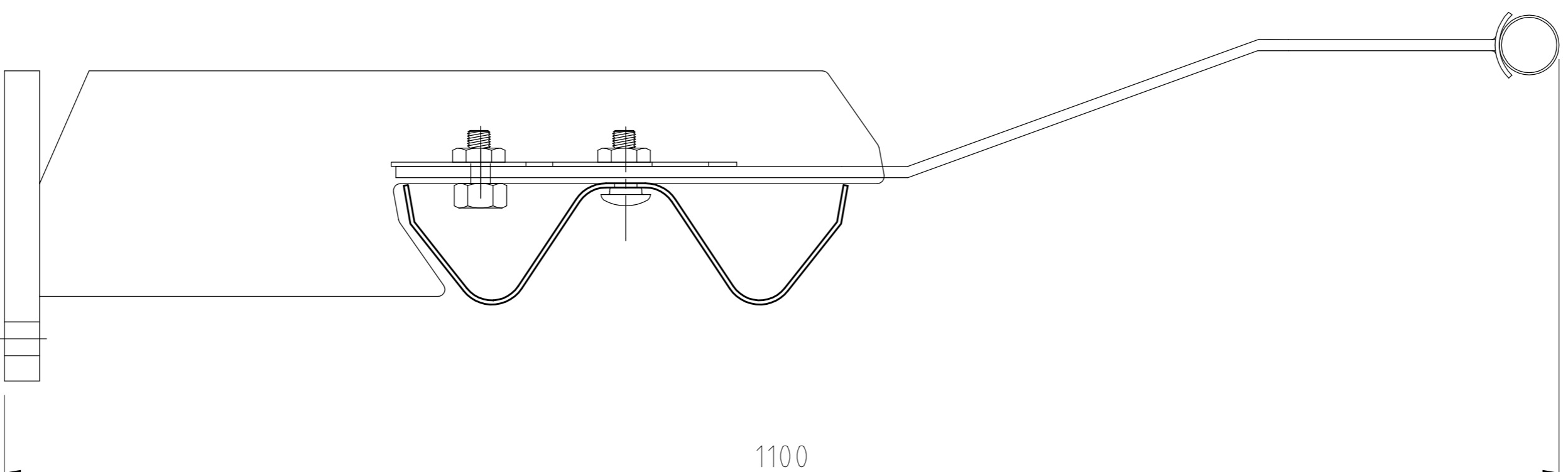
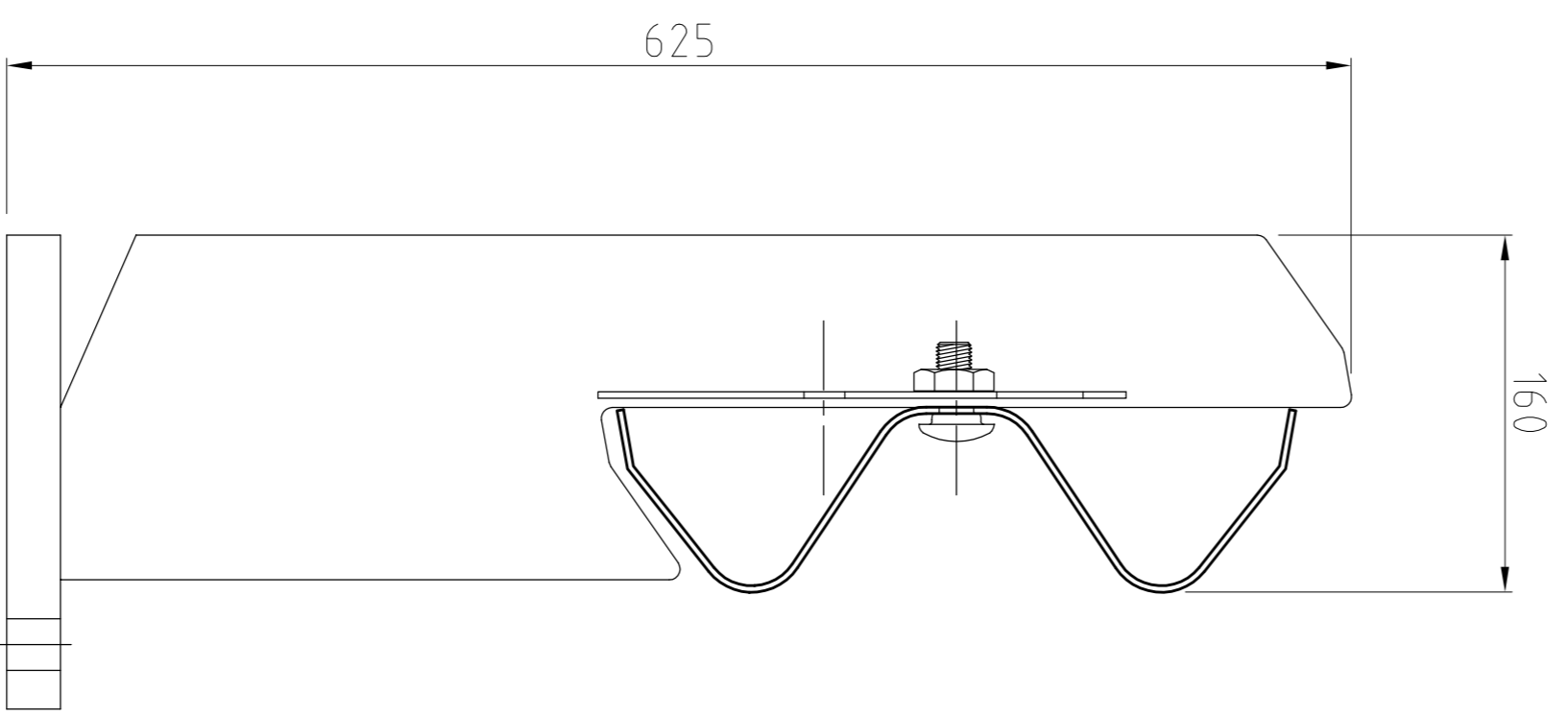


RHINO-STOP HAS BEEN ASSESSED TO EXCEED THE 30KN IMPACT LOAD AS DESCRIBED IN AS/NZS 1170.1 FOR LIGHT TRAFFIC AREAS.

MAX. POST SPACING 2m



BASE PLATE DETAIL



RHINO-STOP TYPE 1

GUARDRAIL

RHINO-STOP TYPE 2

GUARDRAIL &
OFFSIDE BALUSTRADE

RHINO-STOP TYPE 3

GUARDRAIL &
NEARSIDE BALUSTRADE

RHINO-STOP TYPE 4

GUARDRAIL, BALUSTRADE &
ANTI-CLIMB MESH

RHINO-STOP TYPE 5

GUARDRAIL, BALUSTRADE &
SIGHT RAIL

RHINO-STOP TYPE 6

GUARDRAIL, BALUSTRADE,
ANTI-CLIMB MESH & SIGHT RAIL

REVISIONS

REV	DATE	DESCRIPTION	DRAWN	APPRD.
A	05.11.13	INITIAL ISSUE	DB	TC

REVISIONS

REV	DATE	DESCRIPTION	DRAWN	APPRD.



SAFE DIRECTION

DRAWING DESCRIPTION	DRAWING REFERENCE
---------------------	-------------------

RHINO-STOP ASSEMBLY TYPES	
GR-WB-026	

DRAWN BY	AUSTEC DRAFTING	DIMENSIONS	mm
CHECKED	H. WALLACE	SCALE	NTS
APPROVED	T. COLOUHOUN		