

SCHEDULE OF COMPONENTS

Item No - Ref Drawing	Description	Qty
P001 - MD.R132.A01	1800 Steel Post for W Beam	2
P002 - MD.R132.A01	360 Blockout Piece for W Beam	2
B001 - MD.R132.B01	4000 W Beam Rail	1
B002 - MD.R132.B01	300 W Beam Stiffening Piece	1
FB01 - MD.R132.C02	M16x50 Mushroom Head Bolt - Post	2
FB02 - MD.R132.C03	M16x30 Hexagon Bolt - Post	4
FB03 - MD.R132.C02	M16x32 Mushroom Head Bolt - Splice	8
FN01 - MD.R132.C02	M16 Nut	6
FN02 - MD.R132.C02	M16 Oversized Nut (18 deep)	8

NOTES:

Rail lap, post and blockout orientation in relation to traffic direction as shown is essential.

All dimensions shown in millimeters unless otherwise shown.

AMENDMENT DETAILS	DATE
Height of post 710 to 730	July 2001
Note for height of rail is measured	23/3/00

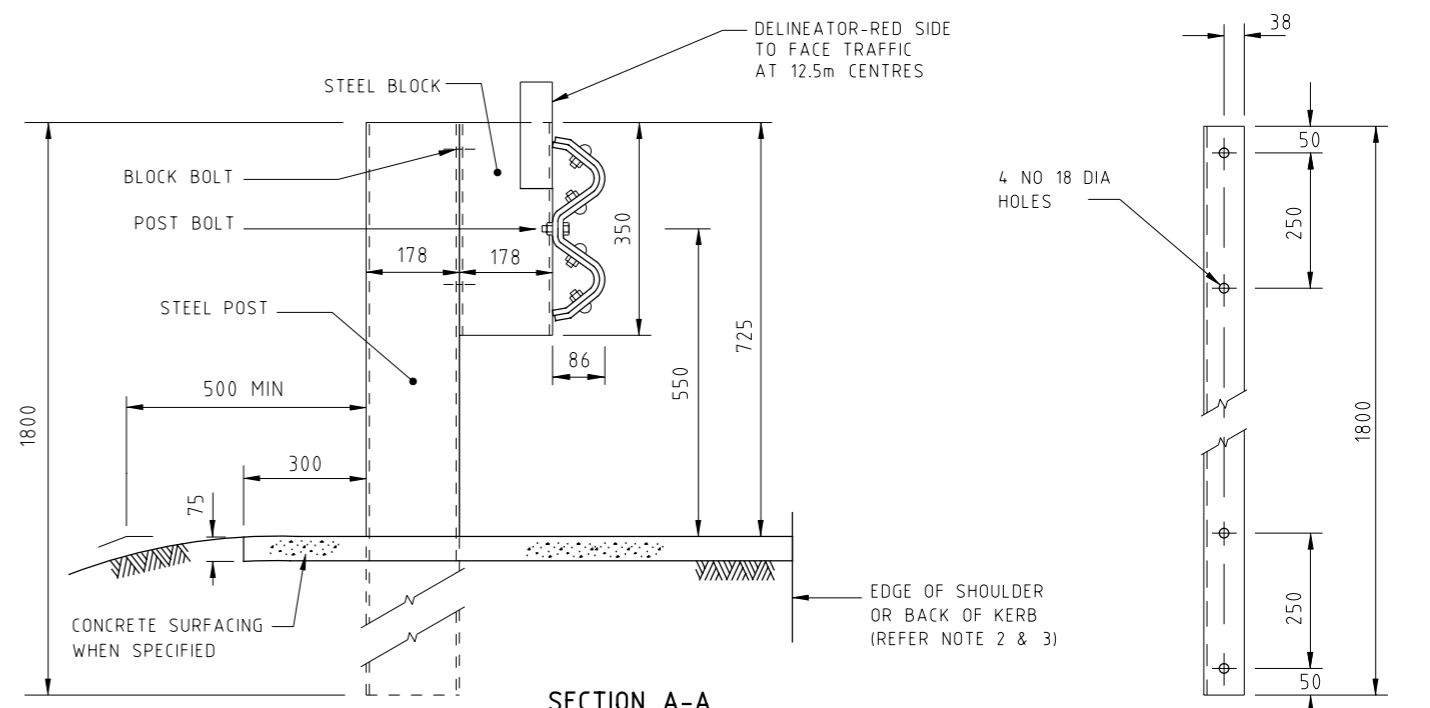
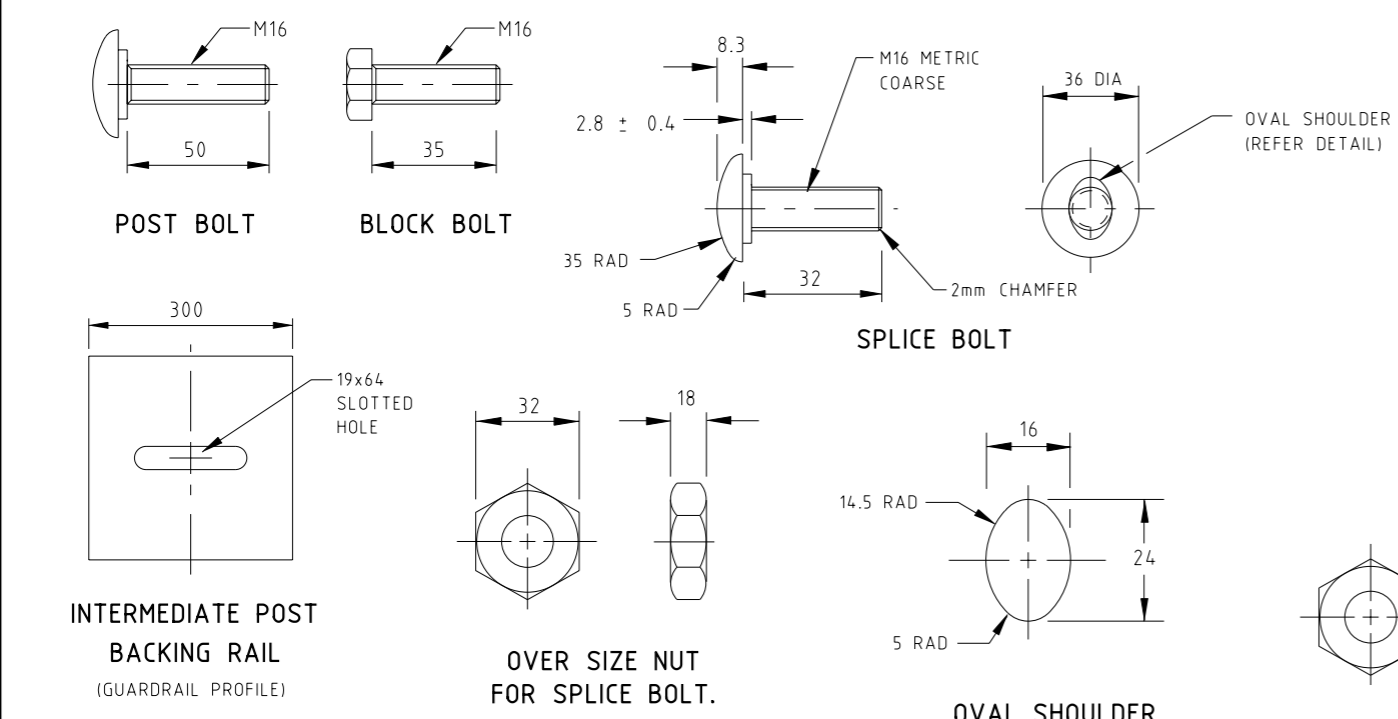
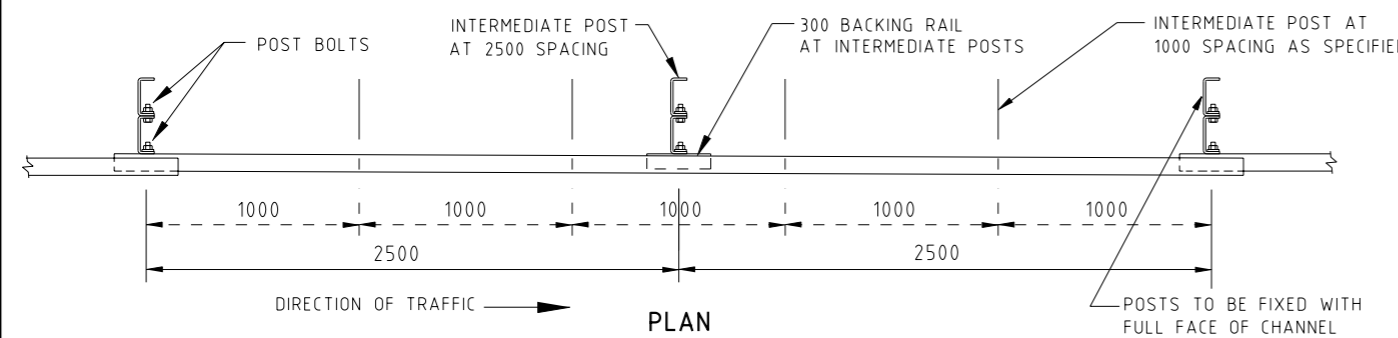
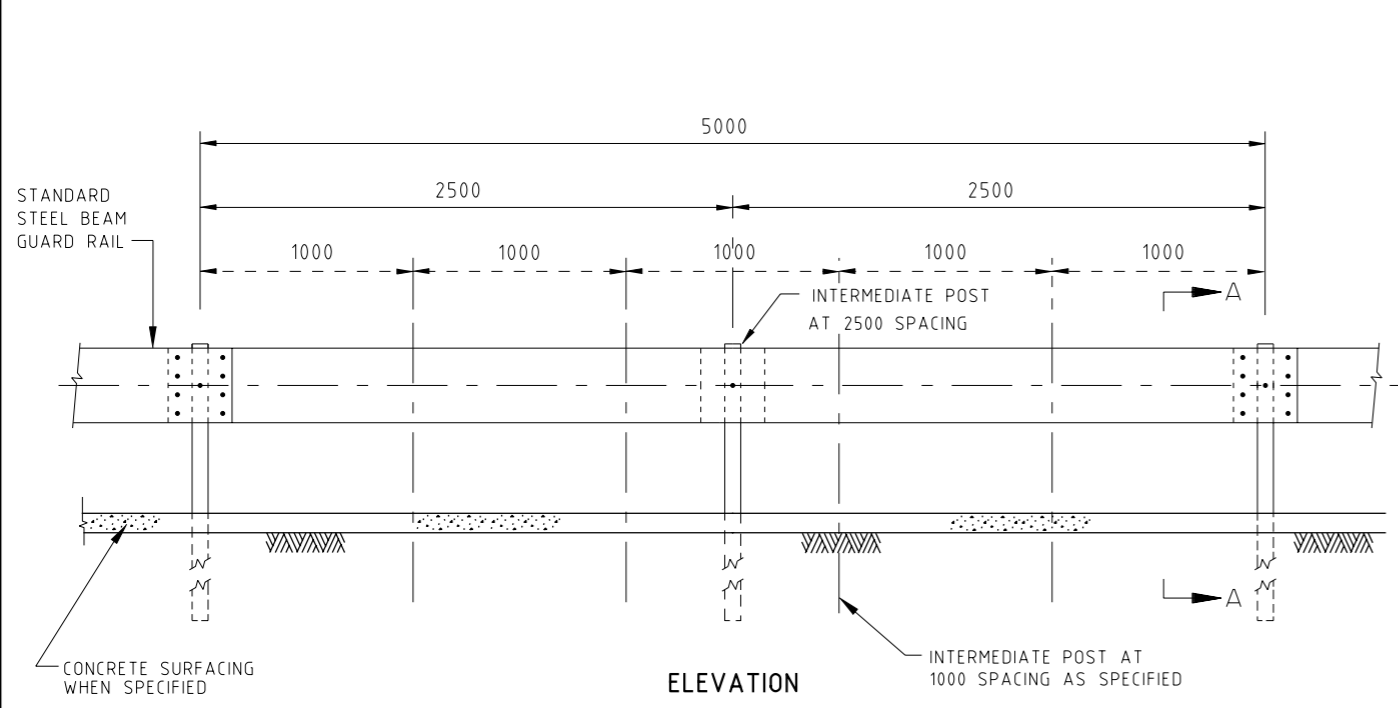
Roads and Traffic Authority NSW

AASHTO G4 W BEAM ASSEMBLY

SCALE	No. OF SHEETS	SHEET No.
N.T.S.	1	1

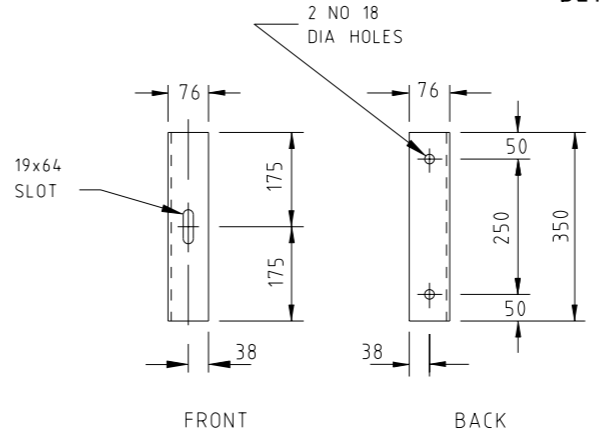
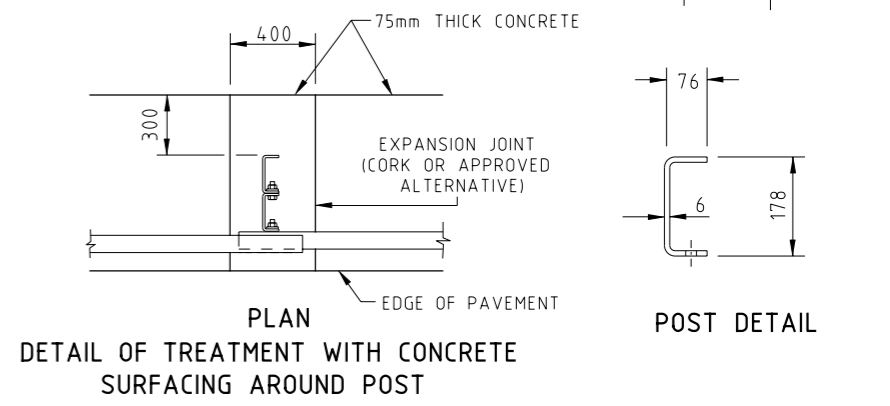
DRAWING NUMBER

MD.R132.F01.A.2



BOLT SCHEDULE

MAIN POST	1 POST BOLT 2 BLOCK BOLTS 8 SPLICE BOLTS 8 OVERSIZE NUTS 3 M16 NUTS
INTERMEDIATE POST	1 POST BOLT 2 BLOCK BOLTS 3 M16 NUTS 1 BACKING RAIL



- NOTES:**
- IN HIGH SPEED AREAS IT IS PREFERABLE NOT TO USE KERB IN CONJUNCTION WITH GUARD FENCE. IN LOW SPEED AREAS BARRIER KERBING MAY BE USED TO DEFLECT VEHICLES APPROACHING THE GUARD FENCE.
 - FOR LOCATION GUIDELINES FOR KERB AND GUARD FENCE COMBINATIONS, REFER TO STANDARD DRAWING SD 3502.
 - WHERE THE FACE OF GUARD FENCE IS ERECTED WITHIN 0 TO 1m BEHIND THE BACK OF KERB, THE MOUNTING HEIGHT SHALL BE MEASURED FROM THE ADJACENT ROAD PAVEMENT SURFACE.
 - PAVEMENT DRAINS SHALL BE LOCATED CLEAR OF AREAS AFFECTED BY GUARD FENCE POSTS.
 - ALL POSTS AND BLOCKS SHALL BE 178 x 76 x 6mm COLD ROLLED STEEL CHANNEL SECTION GRADE 250 MIN.
 - ALL POSTS, BLOCKS, NUTS, BOLTS SHALL BE HOT DIP GALVANIZED TO AS/NZS 4680. HOLES TO BE DRILLED BEFORE GALVANIZING
 - BOLTS TO BE SNUG TIGHTENED TO AS 4100
 - POST BOLT & BLOCK BOLT ARE CLASS 4.6. M16 NUT IS CLASS 5. SPLICE BOLT & OVERSIZE M16 NUT ARE CLASS 8.8.
 - WASHERS ARE NOT TO BE PROVIDED AT POST BOLTS.

ISSUE	APP'D	DATE	AMENDMENT
G	D.B.	30/6/10	POST BOLT & BACKING RAIL AMENDED
F	J.K.	1/7/05	NOTE 6 & 7 AMENDED
E	J.B.	1/8/02	DIMENSION FROM GROUND TO TOP OF BOLT & POST HAS BEEN AMENDED. POST ORIENTATION NOTE ADDED, NOTE 8 ADDED.
D	J.B.	10/99	SECTION A-A AMENDED, BOLT LENGTHS AMENDED.
C	J.C.	1/7/95	SECTION A-A, NOTE 3.
B	R.G.	2/94	NOTE 2.
A	R.G.	10/93	POST SPACING, BOLTS, CONCRETE SURFACING & NOTES

GENERAL NOTES / CROSS REFERENCES

- ALL DIMENSIONS ARE IN MILLIMETRES UNLESS SHOWN OTHERWISE.
- GUARD RAIL TO BE MANUFACTURED FROM BMT 2.7 ± 0.21mm AS1594/HA350 STEEL PLATE.
- THE CONCRETE AROUND THE POST MUST BE FREE TO MOVE BACKWARDS ON IMPACT

TECHNICAL CONSULTING

DESIGNED: PRINCIPAL ROAD DESIGN ENGINEER

APPROVED: *Russ Gordon* 1-10-93

3 PROSPECT HILL ROAD, CAMBERWELL, VICTORIA 3124. PHONE (03) 9811 8355 FAX (03) 9811 8329

CAT: PRED
PROJ: sddgnnew
FILE: sd-3661g.dgn

SCALE OF METRES NOT TO SCALE

STANDARD DRAWING

GUARD FENCE (TYPE B) STEEL POST

FILE NO.	CONTRACT NO.	SHEET NO.	DRAWING NO. SD 3661	ISSUE G
----------	--------------	-----------	---------------------	---------

2/09/2010 Default 10:28:11 AM sd-3661g.dgn