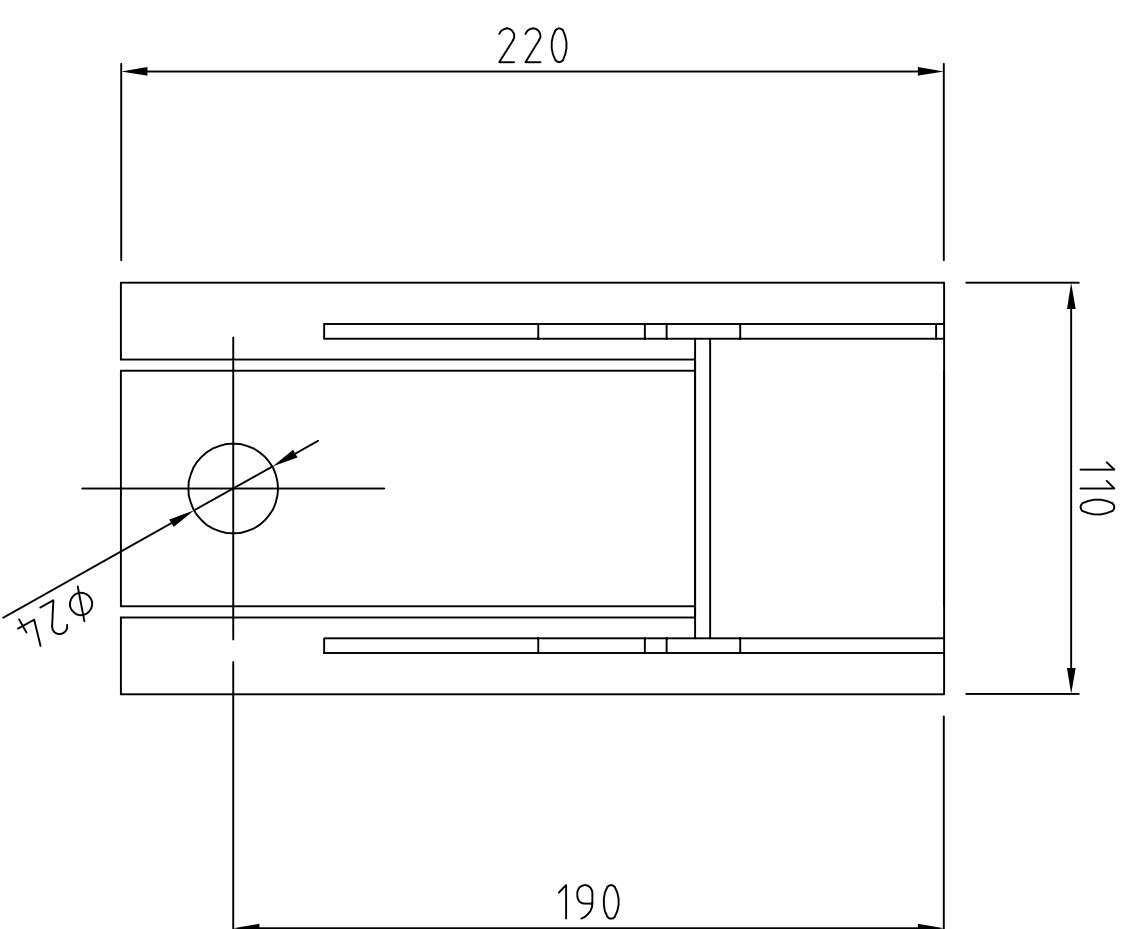
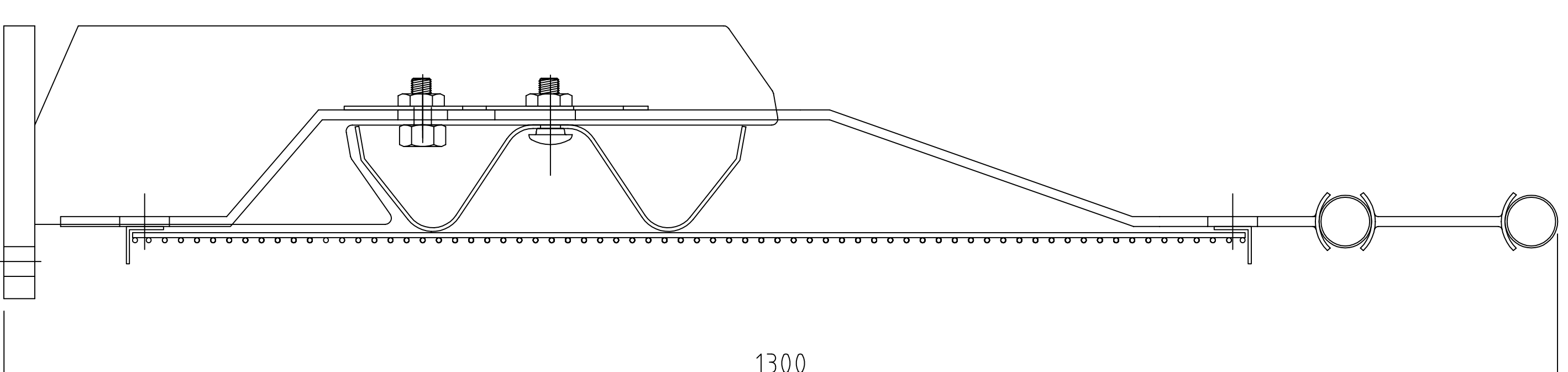
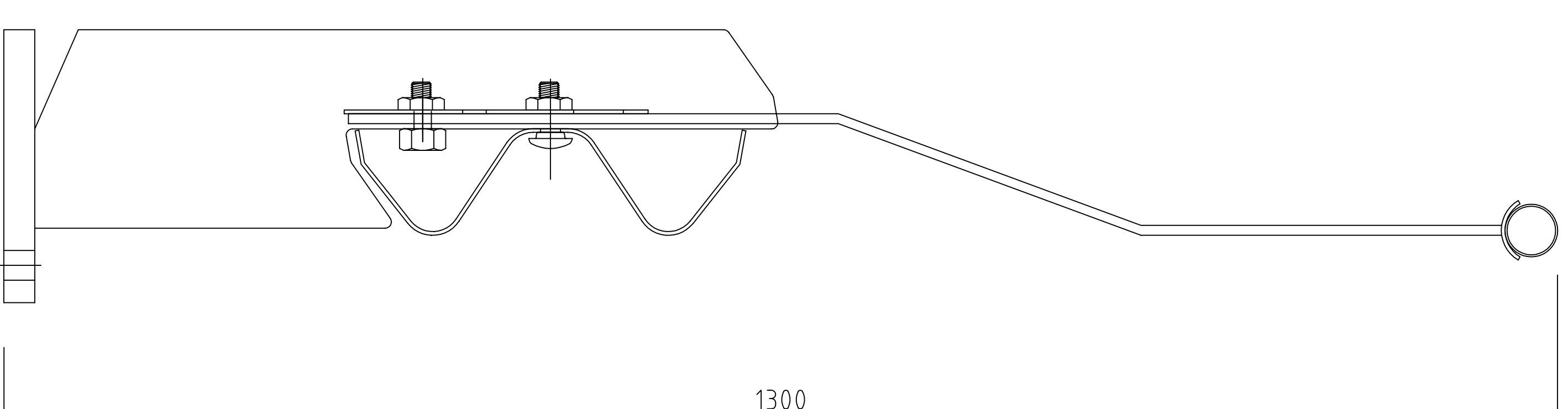
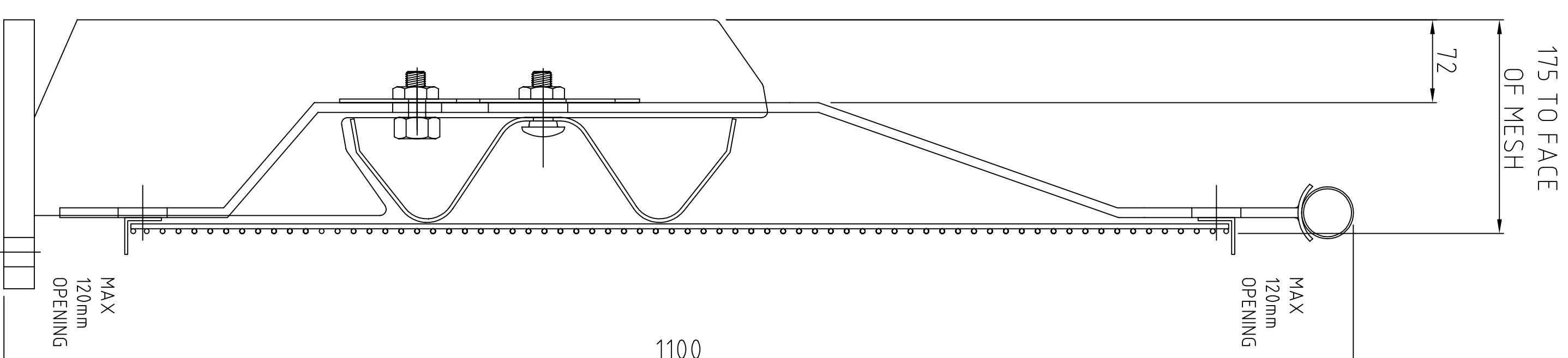
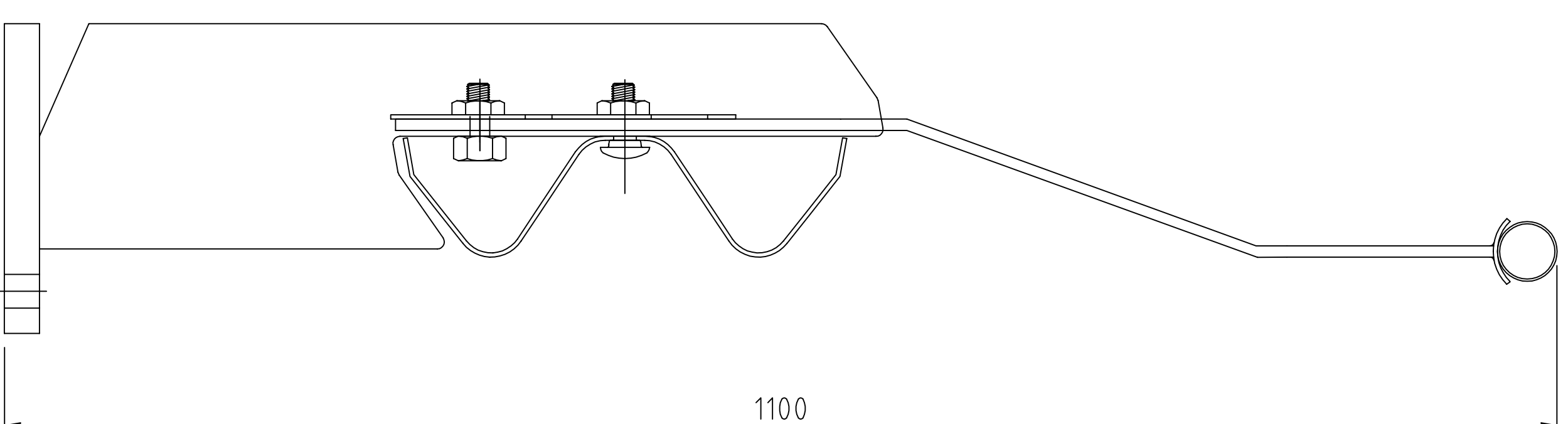
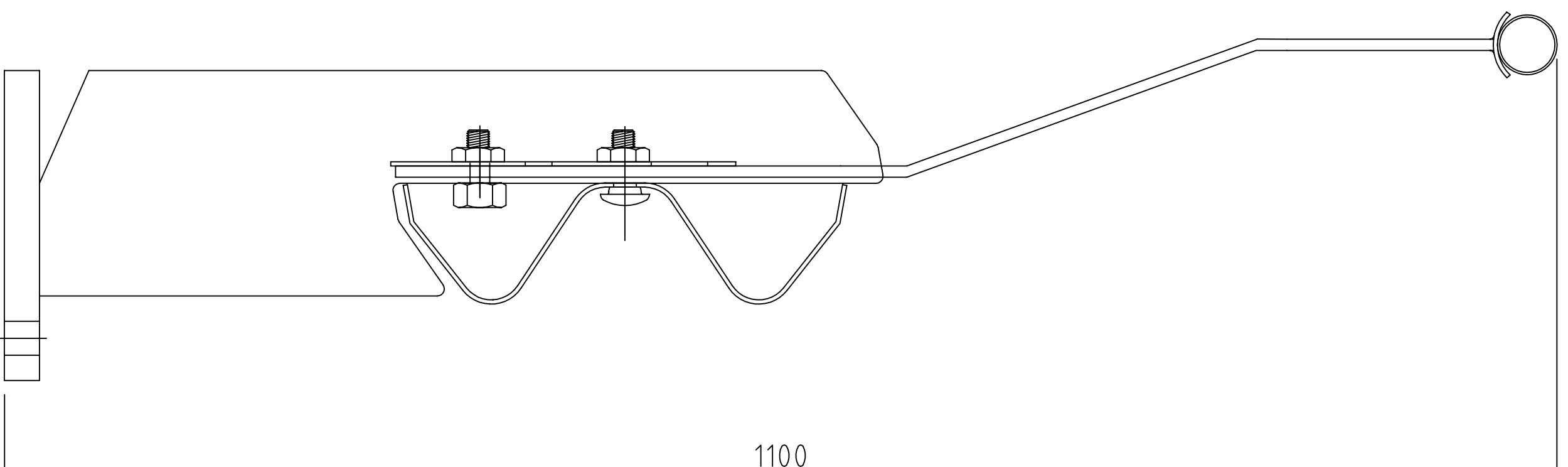
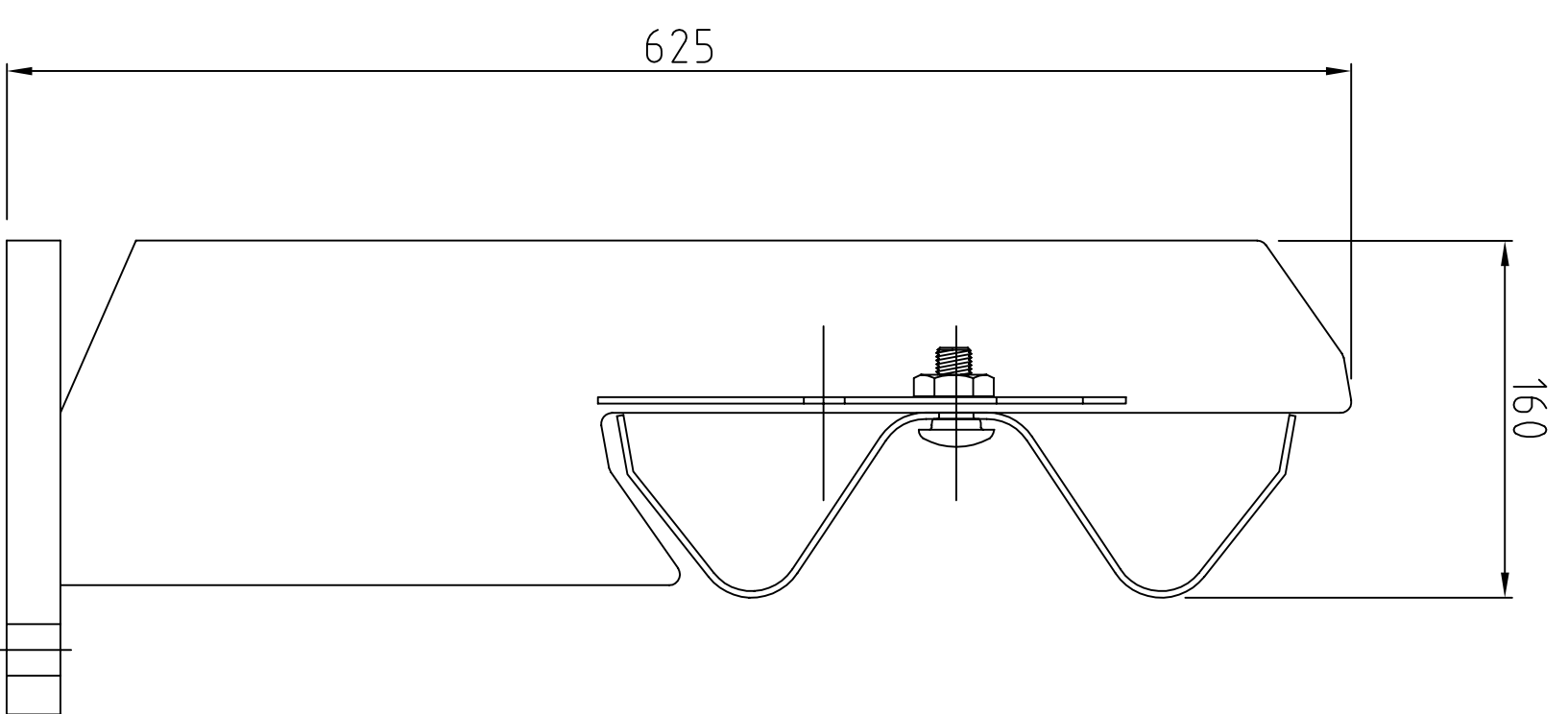


RHINO-STOP HAS BEEN ASSESSED TO EXCEED THE 30kN IMPACT LOAD AS DESCRIBED IN AS/NZS 1170.1 FOR LIGHT TRAFFIC AREAS.

MAX. POST SPACING 2m



BASE PLATE DETAIL



RHINO-STOP TYPE 1

GUARDRAIL

RHINO-STOP TYPE 2

GUARDRAIL & OFFSIDE BALUSTRADE

RHINO-STOP TYPE 3

GUARDRAIL & NEARSIDE BALUSTRADE

RHINO-STOP TYPE 4

GUARDRAIL, BALUSTRADE & ANTI-CLIMB MESH

RHINO-STOP TYPE 5

GUARDRAIL & SIGHT RAIL

RHINO-STOP TYPE 6

GUARDRAIL, BALUSTRADE, ANTI-CLIMB MESH & SIGHT RAIL

REVISIONS

REV	DATE	DESCRIPTION	DRAWN	APPRD.
B	21.07.14	REISSUED FOR INITIAL ISSUE	DB	TC
A	05.11.13	INITIAL ISSUE	DB	TC

REVISIONS

REV	DATE	DESCRIPTION	DRAWN	APPRD.



SAFE DIRECTION

DRAWING DESCRIPTION

DRAWING REFERENCE

RHINO-STOP ASSEMBLY TYPES

GR-WB-026

DRAWN BY	AUSTEC DRAFTING	DIMENSIONS	mm
CHECKED	H. WALLACE	SCALE	NTS
APPROVED	T. COLOUGHOUN		