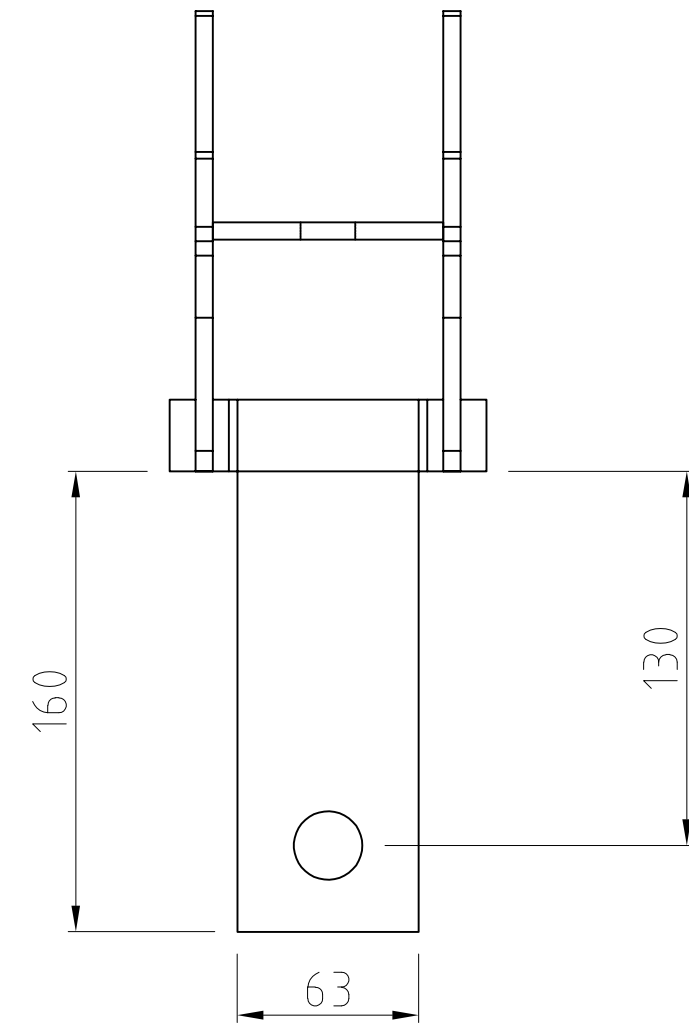
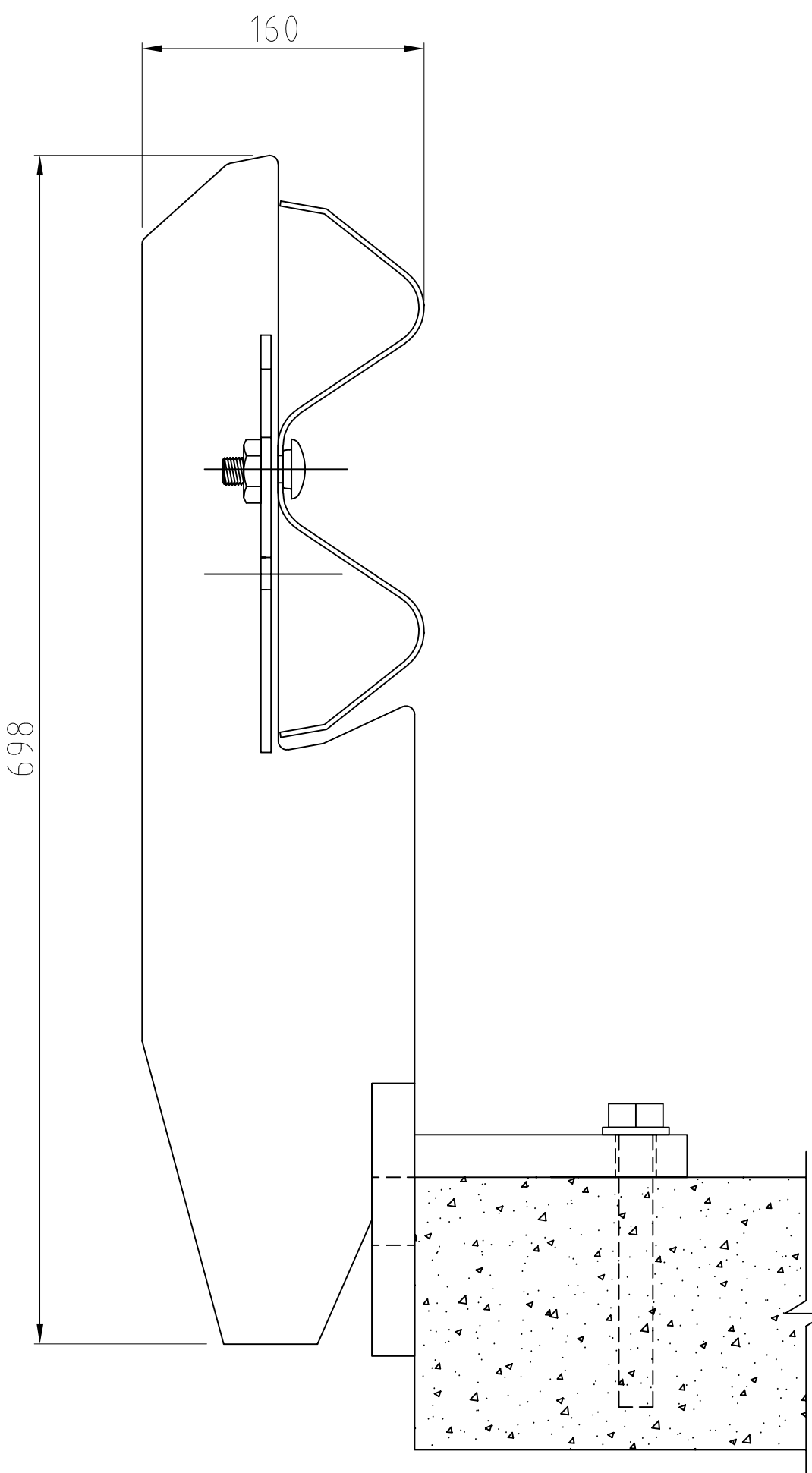


RHINO-STOP HAS BEEN ASSESSED TO EXCEED THE 30kN IMPACT LOAD AS DESCRIBED IN AS/NZS 1170.1 FOR LIGHT TRAFFIC AREAS.

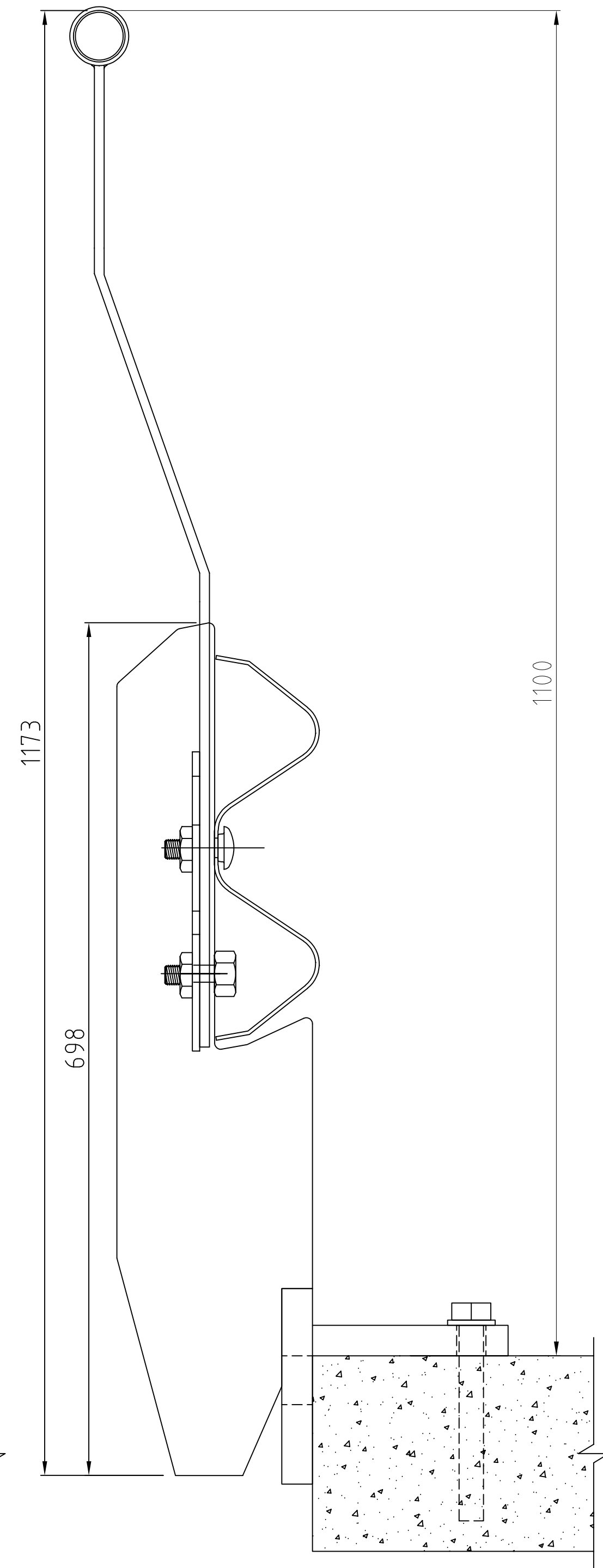
MAX. POST SPACING 2m



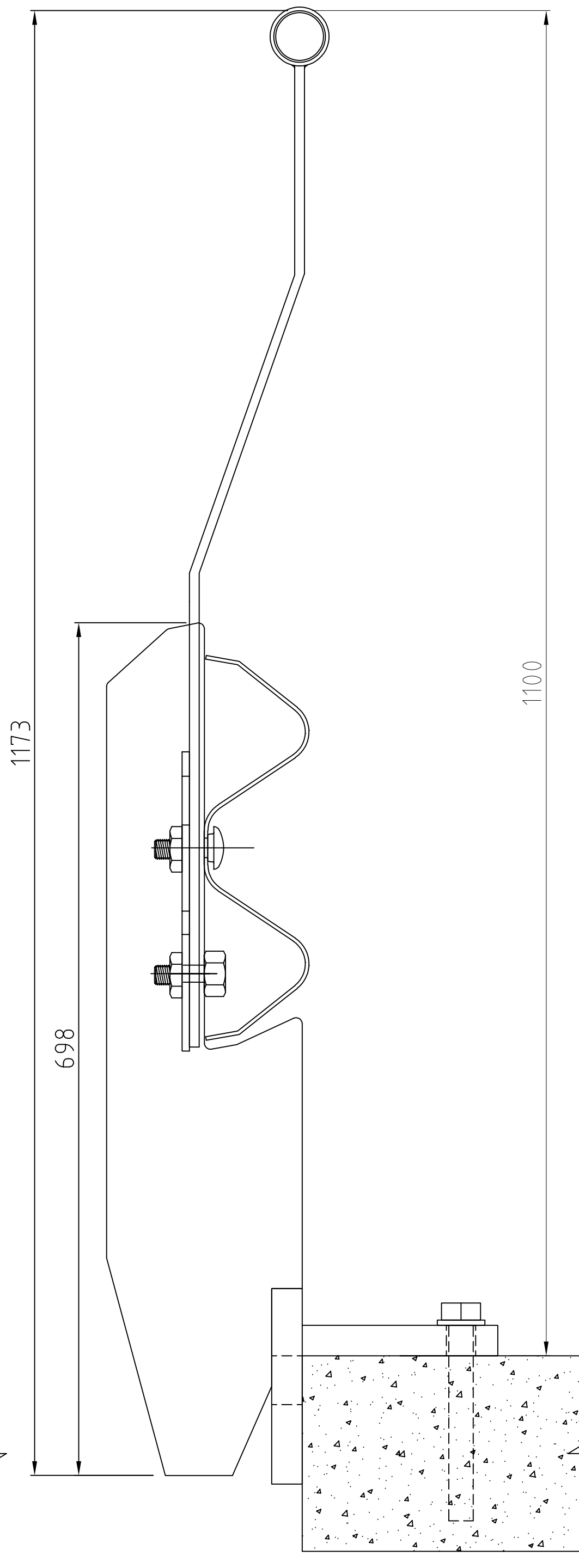
**RHINO-STOP SKY EDGE PLAN VIEW**



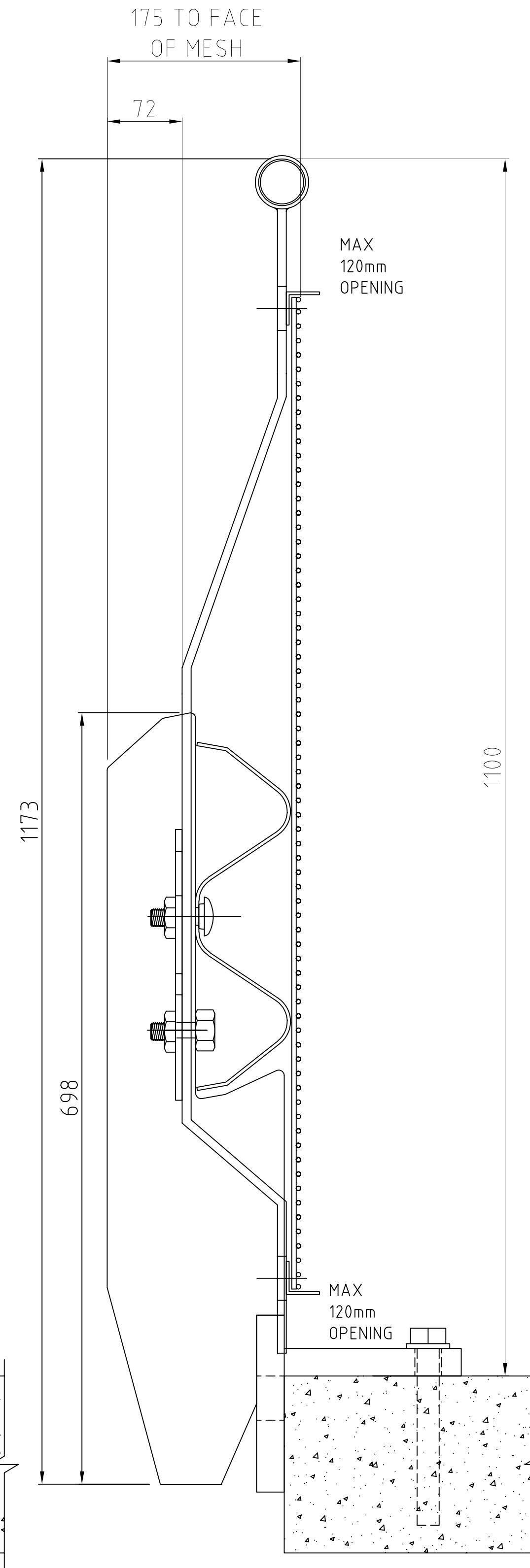
**RHINO-STOP SKY EDGE TYPE 1 GUARDRAIL**



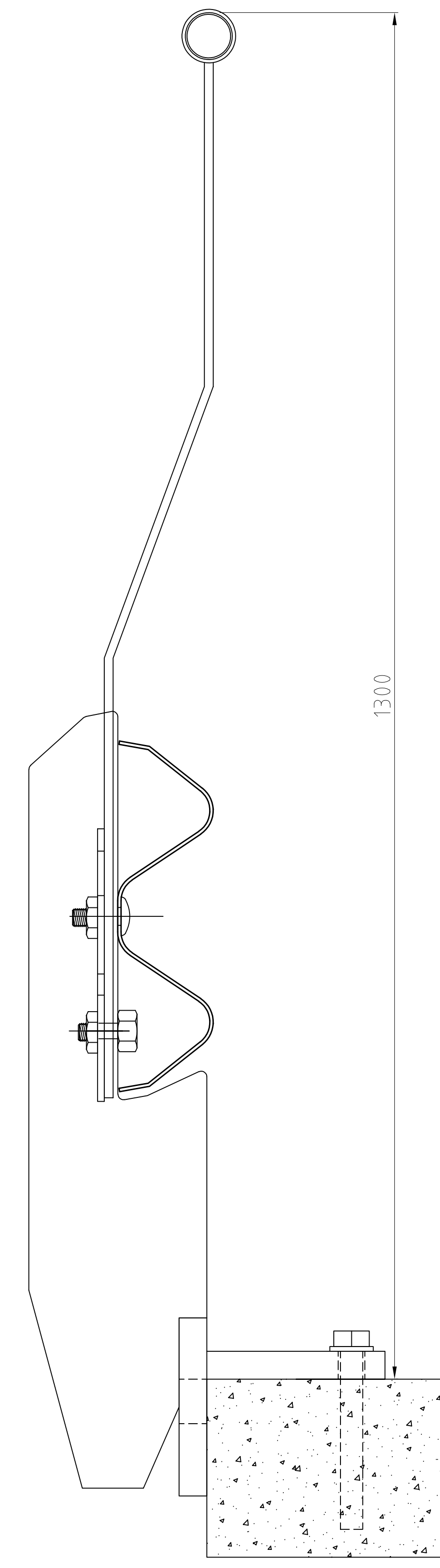
**RHINO-STOP SKY EDGE TYPE 2 GUARDRAIL & OFFSIDE BALUSTRADE**



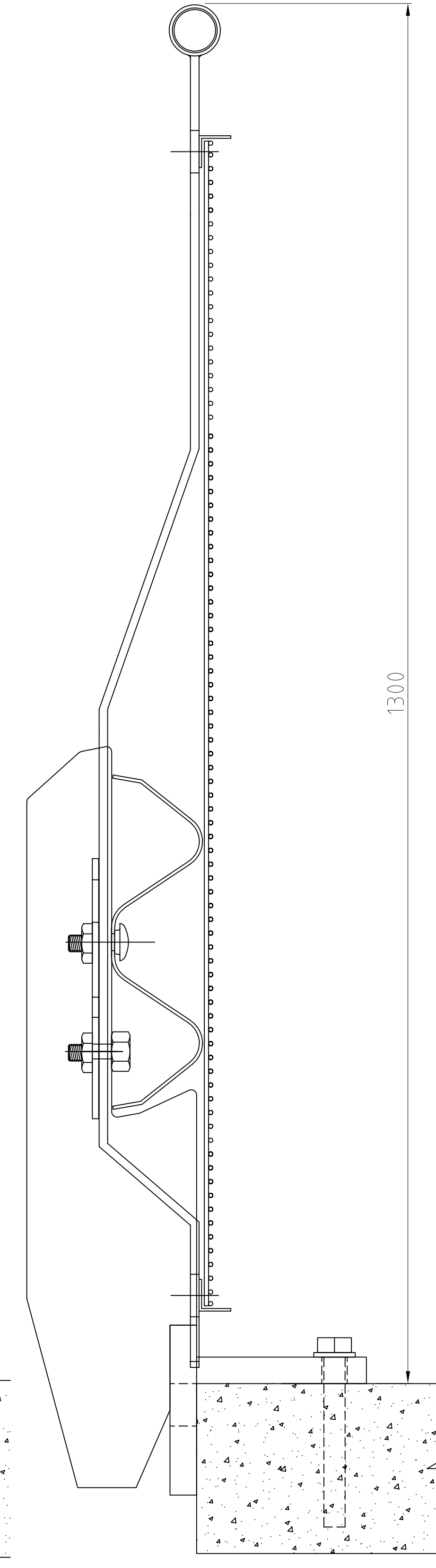
**RHINO-STOP SKY EDGE TYPE 3 GUARDRAIL & NEAR SIDE BALUSTRADE**



**RHINO-STOP SKY EDGE TYPE 4 GUARDRAIL, BALUSTRADE & ANTI-CLIMB MESH**



**RHINO-STOP SKY EDGE TYPE 5 GUARDRAIL & SIGHT RAIL**



**RHINO-STOP SKY EDGE TYPE 6 GUARDRAIL, BALUSTRADE, ANTI-CLIMB MESH & SIGHT RAIL**

REV	DATE	DESCRIPTION	DRAWN	APPRD.
D	11.04.18	NEW HANDRAIL EXTENSION ADDED	MS	TC
C	06.11.15	TYPE 6 HANDRAIL EXTENSION UPDATED	MS	TC
B	19.05.15	TYPE 5 HANDRAIL EXTENSION UPDATED	MS	TC
A	16.09.14	INITIAL ISSUE	DB	TC

REV	DATE	DESCRIPTION	DRAWN	APPRD.



DRAWING DESCRIPTION	RHINO-STOP SKY EDGE ASSEMBLY TYPES			
	DRAWN BY	AUSTEC DRAFTING	DIMENSIONS	mm
DRAWING REFERENCE	GR-WB-036		CHECKED	H. WALLACE
			APPROVED	T. COLQUHOUN
		SCALE	NTS	