

CLAW Mobile Hostile Vehicle Barrier

Peace of mind protection for any event

CLAW is a portable hostile vehicle barrier that can be readily deployed for short term events or used for more permanent applications.

CLAW is unobtrusive by design and can be deployed amongst crowds whom would be oblivious to the nature of its use.

The option to sign post CLAW provide a unique advertising opportunity for your company and or event. Likewise, CLAW can be used for directional signage to channel pedestrian movement or for directing vehicles.

CLAW has been tested to a rigorous range of crash tests for compliance to all notable international standards.

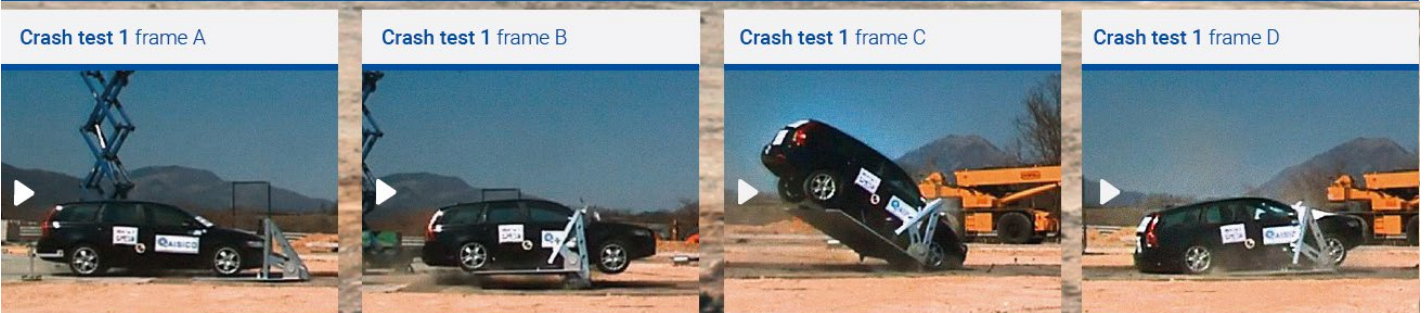
Specifications

- Mobile hostile vehicle barrier compliant to PAS68:2013 and IWA 14-1:2013 international standards
- PAS68:2013 V/1500(M1)/64/90/3.9
- PAS68:2013 V/3500(N1)/64/90/7.3
- IWA14-1:2013 V/1500(M1)/64/90/4.7
- IWA14-1:2013 V/3500(N1)/64/90/8.2

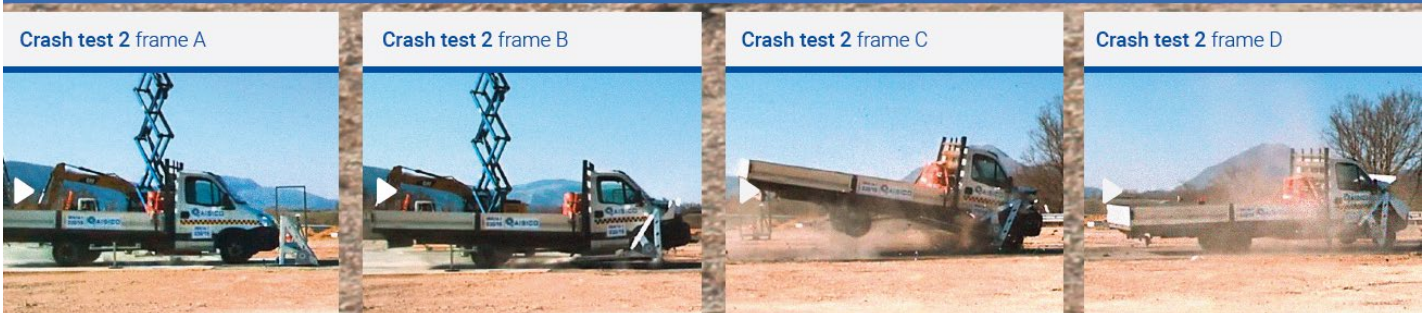
Features

- Surface mounted – no ground anchors
- Can be sign posted for advertising or directional signage
- Pedestrian friendly
- Does not require jointing to adjacent units
- Non-hostile or threatening feel to people

Test 1. IWA 14-1:2013 V/1,500(M1)/64/90:4.7 and PAS68:2013 V/1500(M1)/64/90/3.9



Test 2. IWA 14-1:2013 V/3,500(N1)/64/90:8.2 and PAS68:2013 V/3500(N1)/64/90/7.3





CLAW Mobile Hostile Vehicle Barrier

Peace of mind protection for any event

