

NOTES:

1. RAMSHIELD® TO BE CONSTRUCTED IN ACCORDANCE WITH SAFE DIRECTION ASSEMBLY DRAWING SD-RB-01000.
2. RamShield® GuardRail has been crash tested in accordance with MASH Test Level 3 (TL3) at rail heights of between 730mm and 820mm above ground.
3. An installed rail height of 800mm +/-20mm provides compatibility with MASH guardrail end terminals.
4. The W-Beam rail may be bolted to the Post using a M16x32mm or M16x50mm Mushroom Head Bolt, with a standard or oversize M16 Hex Nut.

REVISIONS

REV.	ZONE	DESCRIPTION	DATE	APPV'D
A		Original Issue, supersedes GR-WB-100	09/05/2022	HW

REDUCED POST SPACING OF 1m SHALL EXTEND 10m PRIOR TO THE APPROACH END OF THE HAZARD

STANDARD 2m POST SPACING MAY RESUME
BEYOND DEPARTURE END OF THE HAZARD

HAZARD

TRAFFIC →

PLAN VIEW

STANDARD 2m POST SPACING

1m POST SPACING

STANDARD 2m POST SPACING

TRAFFIC →

FRONT ELEVATION

BOM

ITEM NO.	PART NUMBER	DESCRIPTION	Weight kg	NOTES
1	GR-PG-SS-1560-AG	RamShield® Standard Post 1560mm	14.1	
2	GR-WB-SR-4000-CG	W-Beam Guardrail 4.0M NLL, 1.0M CTRS	43.3	
3	GR-FS-16-0032-MZ	M16x32 Mushroom Head SPLICE Bolt Class 8.8 HDG	0.1	(4)
4	GR-FS-16-0000-NG	M16 Hex Nut, 32A/F Oversize, Narrow, Class 8, HDG	0.08	(4)
5	GR-FS-16-0032-MG	M16x32 Mushroom Head SPLICE Bolt & Oversize Nut Assy Class 8.8	0.2	

MATERIAL:

FINISH:

STATUS	NAME	DATE
DRAWN	W. Rogulski	3/05/2022
CHK'D	T. Colquhoun	09/05/2022
APPV'D	H. Wallace	09/05/2022

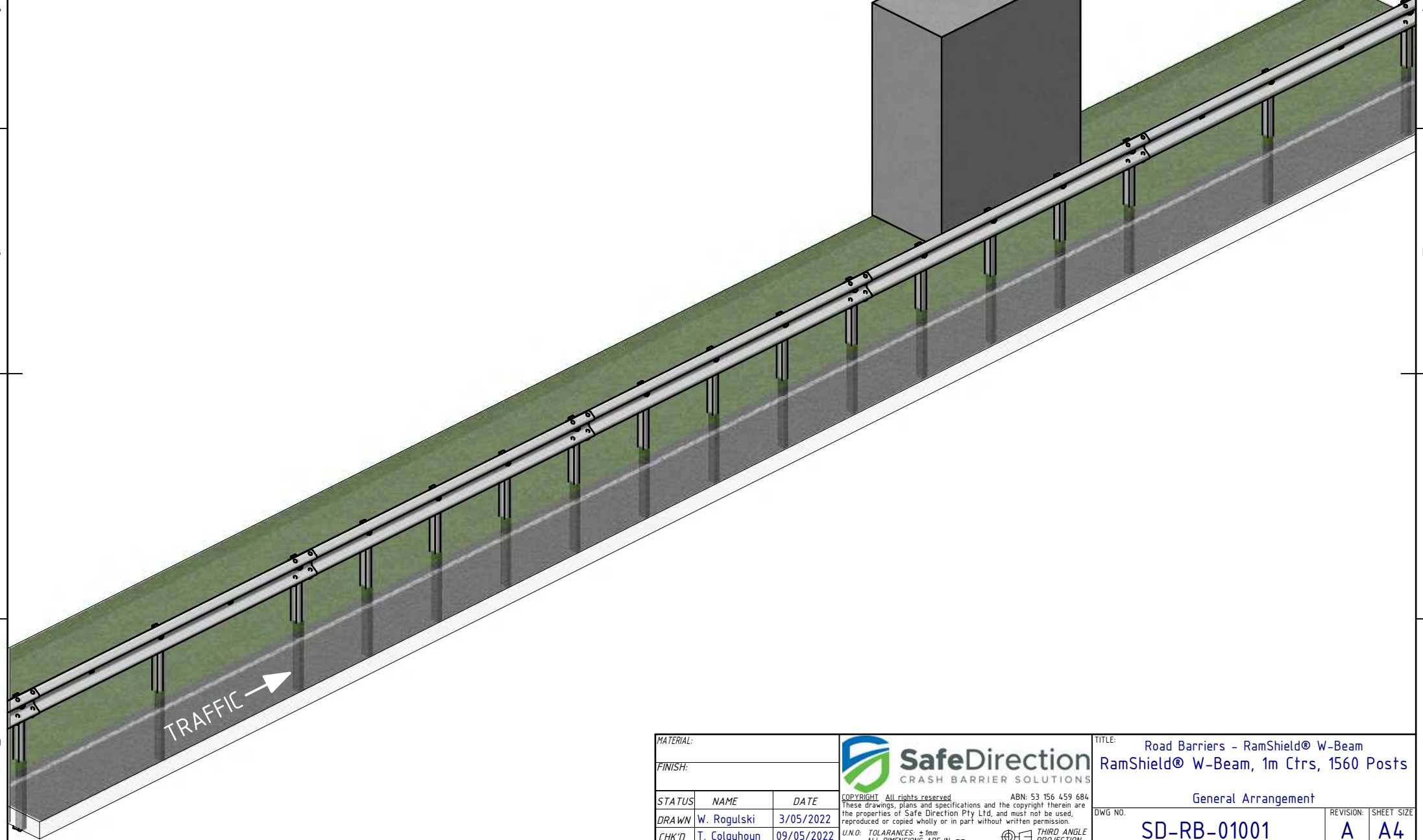




COPYRIGHT: All rights reserved. ABN: 53 156 459 684 These drawings, plans and specifications and the copyright therein are the properties of Safe Direction Pty Ltd, and must not be used, reproduced or copied wholly or in part without written permission.	
U.N.O: TOLERANCES: ±1mm ALL DIMENSIONS ARE IN: mm	THIRD ANGLE PROJECTION
STATUS: APPROVED	

TITLE:

Road Barriers - RamShield® W-Beam RamShield® W-Beam, 1m Ctrs, 1560 Posts General Arrangement			
DWG NO.	SD-RB-01001	REVISION:	SHEET SIZE
WEIGHT: 555.1kg	DO NOT SCALE DRAWING	SCALE: 1:75	SHEET 1 of 2

- NOTES:
1. RAMSHIELD® TO BE CONSTRUCTED IN ACCORDANCE WITH SAFE DIRECTION ASSEMBLY DRAWING SD-RB-01000.
 2. RamShield® GuardRail has been crash tested in accordance with MASH Test Level 3 (TL3) at rail heights of between 730mm and 820mm above ground.
 3. An installed rail height of 800mm +/-20mm provides compatibility with MASH guardrail end terminals.
 4. The W-Beam rail may be bolted to the Post using a M16x32mm or M16x50mm Mushroom Head Bolt, with a standard or oversize M16 Hex Nut.



MATERIAL:			 SafeDirection CRASH BARRIER SOLUTIONS	TITLE: Road Barriers – RamShield® W-Beam RamShield® W-Beam, 1m Ctrs, 1560 Posts				
FINISH:				General Arrangement				
STATUS	NAME	DATE	<small>COPYRIGHT All rights reserved. ABN: 53 156 459 684 These drawings, plans and specifications and the copyright therein are the properties of Safe Direction Pty Ltd, and must not be used, reproduced or copied wholly or in part without written permission. U.N.O: TOLERANCES: ±1mm ALL DIMENSIONS ARE IN: mm</small>  THIRD ANGLE PROJECTION		DWG NO.	REVISION:	SHEET SIZE	
DRAWN	W. Rogulski	3/05/2022			SD-RB-01001	A	A4	
CHK'D	T. Colquhoun	09/05/2022						
APPV'D	H. Wallace	09/05/2022						
STATUS:			APPROVED		WEIGHT: 555.1kg	DO NOT SCALE DRAWING	SCALE: 1:50	SHEET 2 of 2