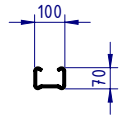


# NOTES:

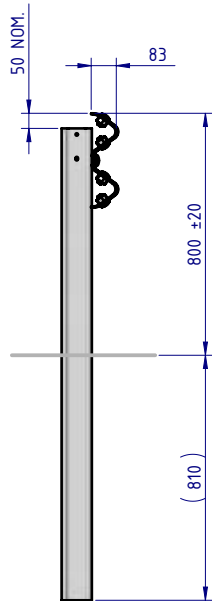
1. RamShield® GuardRail has been crash tested in accordance with MASH Test Level 3 (TL3) at rail heights of between 730mm and 820mm above ground.
2. Recorded MASH TL3 deflection = 1.56m (2270kg Pickup Truck travelling at 100km/h and 25 degrees).
3. An installed rail height of 800mm +/-20mm provides compatibility with MASH guardrail end terminals.
4. The W-Beam guardrail panel may be bolted to the Post using a M16x32mm or M16x50mm Mushroom Head Bolt, with a standard or oversize M16 Hex Nut.
5. The W-Beam guardrail panel is punched at 1m centres to facilitate:
  - a. attachment of BikerShield motorcycle protection barrier;
  - b. installation of posts at 1m centres where reduced dynamic deflection is required;
  - c. 6m span assembly - refer to SD-RB-01019 drawing.

## REVISIONS

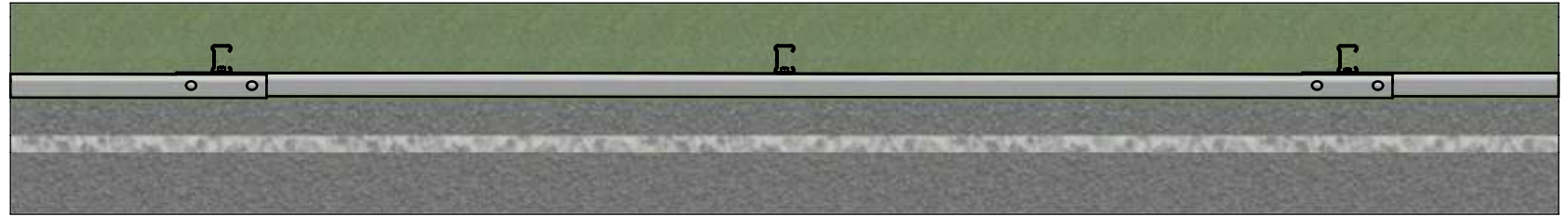
REV.	ZONE	DESCRIPTION	DATE	APPV'D
A		Original Issue, supersedes GR-WB-060	09/05/2022	HW



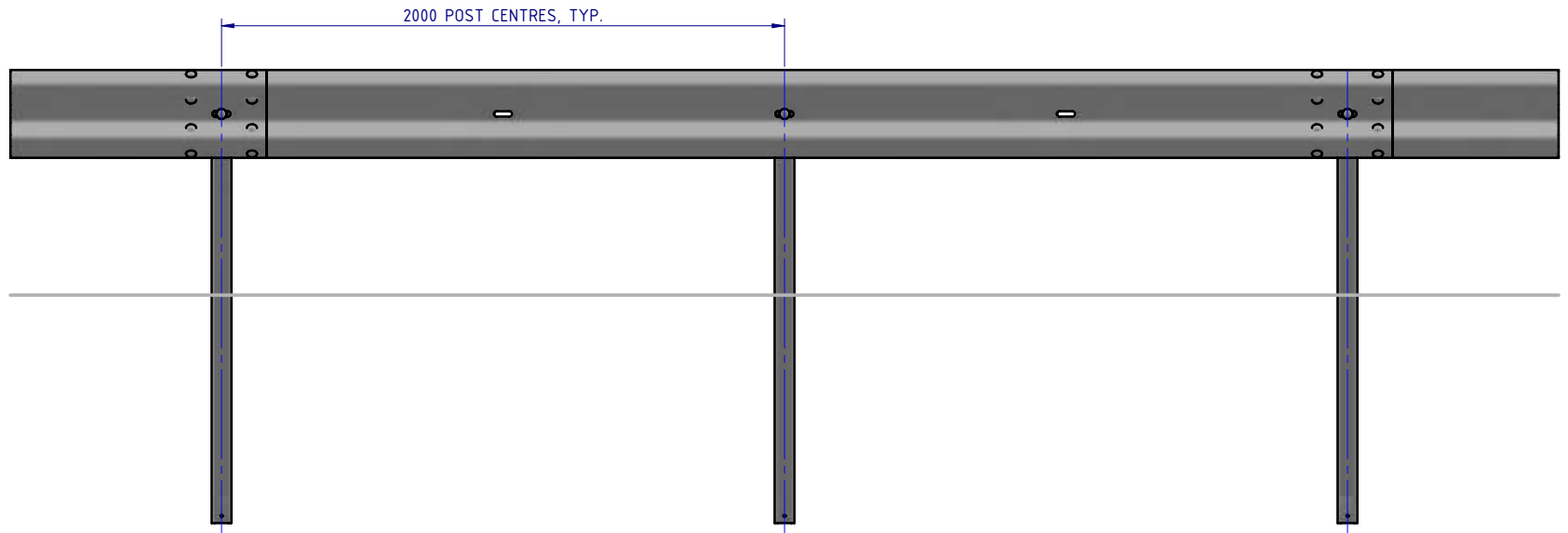
POST PLAN



SIDE ELEVATION



PLAN VIEW



FRONT ELEVATION

BOM			
ITEM NO.	PART NUMBER	DESCRIPTION	Weight kg
1	GR-PG-SS-1560-AG	RamShield® Standard Post 1560mm	14.1
2	GR-WB-SR-4000-CG	W-Beam Guardrail 4.0M NLL, 1.0M CTRS	43.3
3	GR-FS-16-0032-MZ	M16x32 Mushroom Head SPLICE Bolt Class 8.8 HDG	0.1 (4)
4	GR-FS-16-0000-NG	M16 Hex Nut, Class 5, HDG	0.04 (4)
5	GR-FS-16-0032-MG	M16x32 Mushroom Head SPLICE Bolt & Oversize Nut Assy CL8.8	0.2

MATERIAL:		
FINISH:		
STATUS	NAME	DATE
DRAWN	W. Rogulski	3/05/2022
CHK'D	T. Colquhoun	09/05/2022
APPV'D	H. Wallace	09/05/2022



**SafeDirection**  
CRASH BARRIER SOLUTIONS

COPYRIGHT: All rights reserved. ABN: 53 156 459 684  
These drawings, plans and specifications and the copyright therein are the properties of Safe Direction Pty Ltd, and must not be used, reproduced or copied wholly or in part without written permission.

U.N.O: TOLERANCES: ±1mm  
ALL DIMENSIONS ARE IN: mm

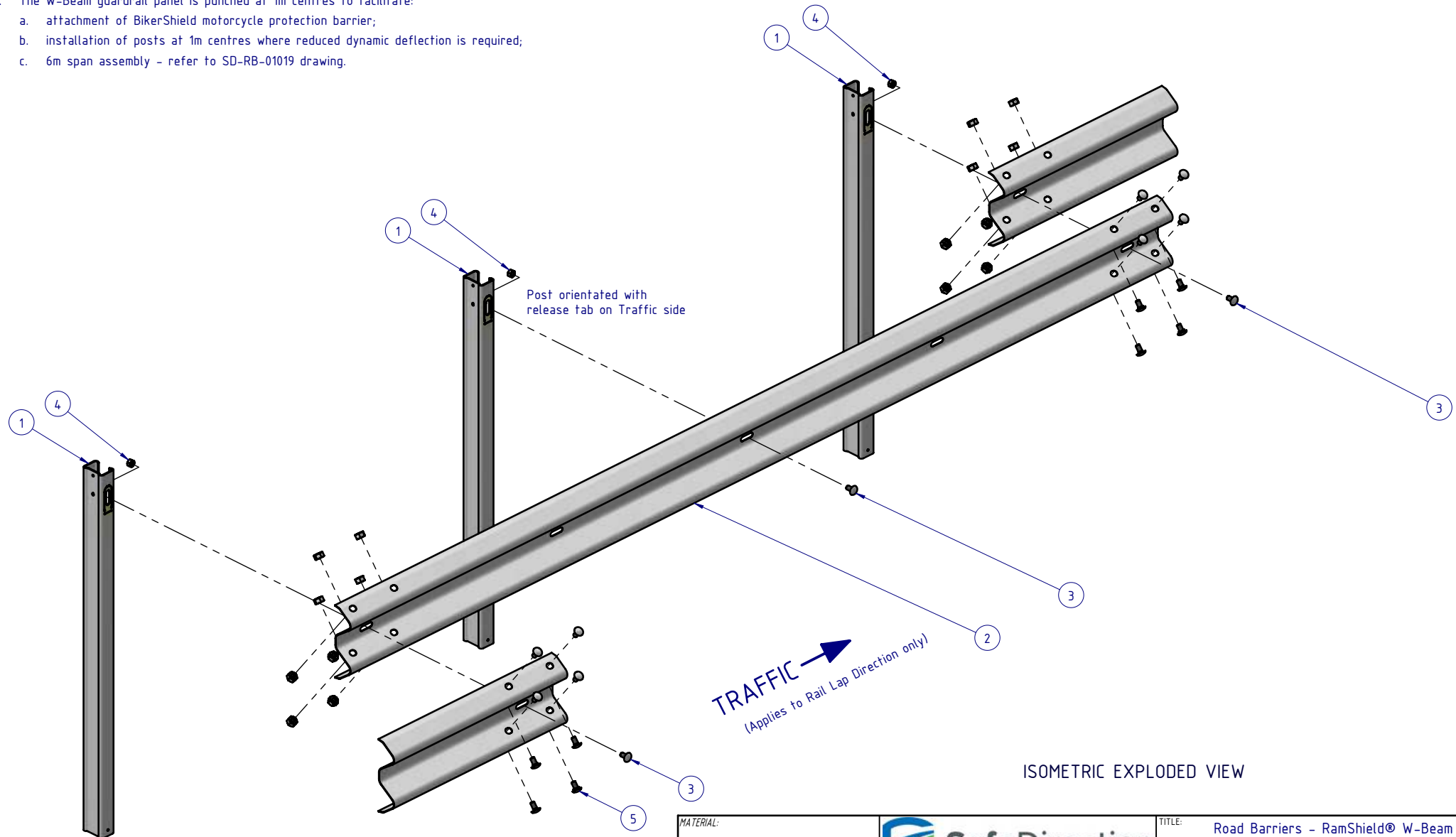
**THIRD ANGLE PROJECTION**



**APPROVED**

TITLE: Road Barriers - RamShield® W-Beam RamShield® W-Beam, 2m Ctrs, 1560 Posts General Arrangement			
DWG NO.	SD-RB-01000	REVISION:	A
WEIGHT: 107.3kg	DO NOT SCALE DRAWING	SCALE: 1:25	SHEET 1 of 3

# NOTES:

1. RamShield® GuardRail has been crash tested in accordance with MASH Test Level 3 (TL3) at rail heights of between 730mm and 820mm above ground.
2. Recorded MASH TL3 deflection = 1.56m (2270kg Pickup Truck travelling at 100km/h and 25 degrees).
3. An installed rail height of 800mm +/-20mm provides compatibility with MASH guardrail end terminals.
4. The W-Beam guardrail panel may be bolted to the Post using a M16x32mm or M16x50mm Mushroom Head Bolt, with a standard or oversize M16 Hex Nut.
5. The W-Beam guardrail panel is punched at 1m centres to facilitate:
  - a. attachment of BikerShield motorcycle protection barrier;
  - b. installation of posts at 1m centres where reduced dynamic deflection is required;
  - c. 6m span assembly - refer to SD-RB-01019 drawing.



MATERIAL:			 <div>SafeDirection CRASH BARRIER SOLUTIONS</div>	TITLE: Road Barriers - RamShield® W-Beam RamShield® W-Beam, 2m Ctrs, 1560 Posts			
FINISH:				General Arrangement			
STATUS	NAME	DATE	<div>COPYRIGHT: All rights reserved. ABN: 53 156 459 684 These drawings, plans and specifications and the copyright therein are the properties of Safe Direction Pty Ltd, and must not be used, reproduced or copied wholly or in part without written permission. U.N.O: TOLERANCES: ±1mm ALL DIMENSIONS ARE IN: mm</div> <div> THIRD ANGLE PROJECTION</div>		DWG NO.	REVISION:	SHEET SIZE
DRAWN	W. Rogulski	3/05/2022			SD-RB-01000	A	A4
CHK'D	T. Colquhoun	09/05/2022			WEIGHT: 107.3kg	DO NOT SCALE DRAWING	SCALE: 1:20
APPV'D	H. Wallace	09/05/2022			STATUS: <b>APPROVED</b>	SHEET 2 of 3	

# NOTES:

1. RamShield® GuardRail has been crash tested in accordance with MASH Test Level 3 (TL3) at rail heights of between 730mm and 820mm above ground.
2. Recorded MASH TL3 deflection = 1.56m (2270kg Pickup Truck travelling at 100km/h and 25 degrees).
3. An installed rail height of 800mm +/-20mm provides compatibility with MASH guardrail end terminals.
4. The W-Beam guardrail panel may be bolted to the Post using a M16x32mm or M16x50mm Mushroom Head Bolt, with a standard or oversize M16 Hex Nut.
5. The W-Beam guardrail panel is punched at 1m centres to facilitate:
  - a. attachment of BikerShield motorcycle protection barrier;
  - b. installation of posts at 1m centres where reduced dynamic deflection is required;
  - c. 6m span assembly - refer to SD-RB-01019 drawing.

A

A

B

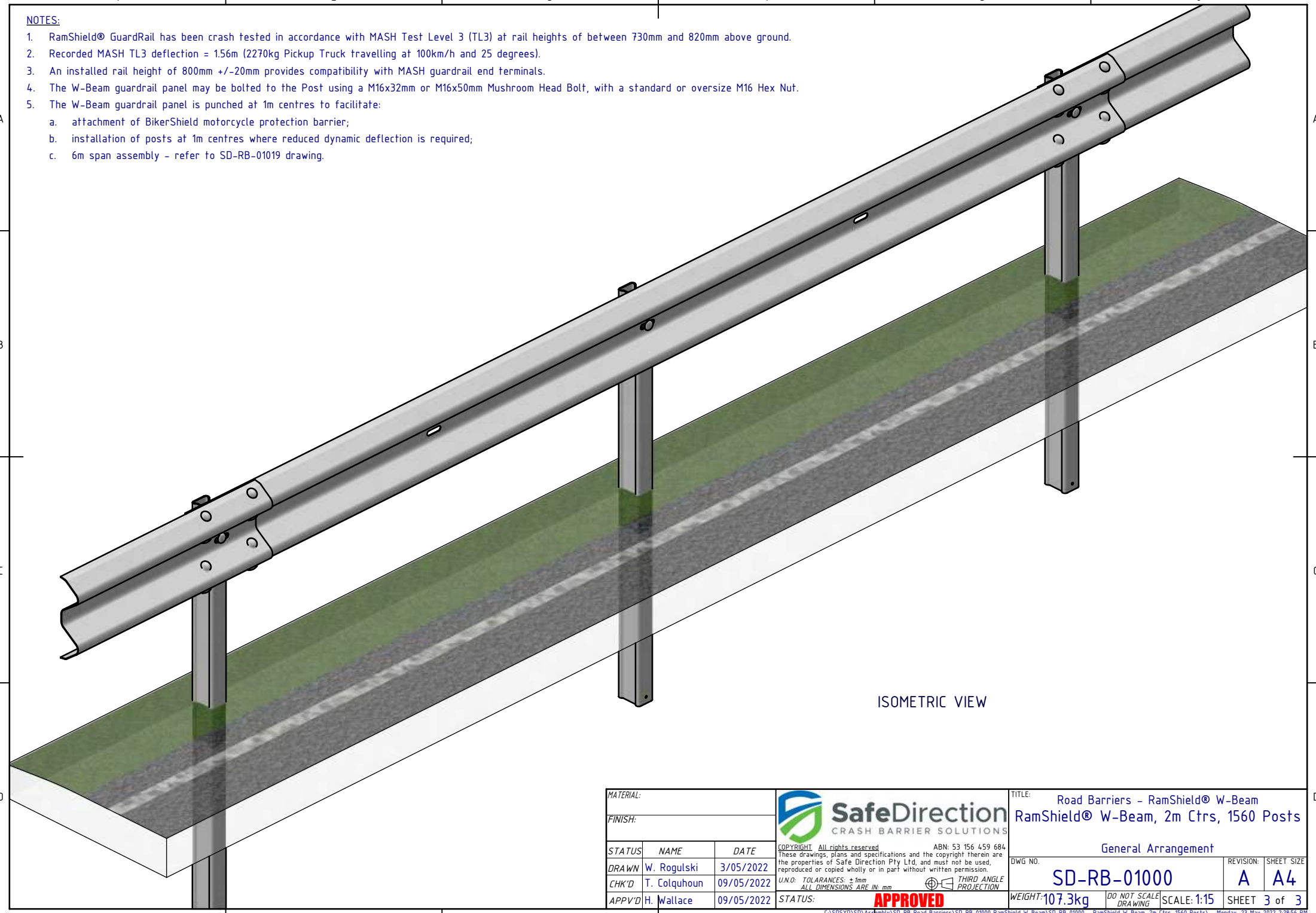
B

C



C

D

D



ISOMETRIC VIEW

MATERIAL:			 <b>SafeDirection</b> CRASH BARRIER SOLUTIONS	TITLE: Road Barriers - RamShield® W-Beam RamShield® W-Beam, 2m Ctrs, 1560 Posts			
FINISH:				General Arrangement			
STATUS	NAME	DATE	<small>COPYRIGHT: All rights reserved. ABN: 53 156 459 684 These drawings, plans and specifications and the copyright therein are the properties of Safe Direction Pty Ltd, and must not be used, reproduced or copied wholly or in part without written permission. U.N.O. TOLERANCES: ±1mm ALL DIMENSIONS ARE IN: mm</small>  THIRD ANGLE PROJECTION		DWG NO.	REVISION:	SHEET SIZE
DRAWN	W. Rogulski	3/05/2022			SD-RB-01000	A	A4
CHK'D	T. Colquhoun	09/05/2022			DO NOT SCALE DRAWING	SCALE: 1:15	SHEET 3 of 3
APPV'D	H. Wallace	09/05/2022			WEIGHT: 107.3kg		

APPROVED