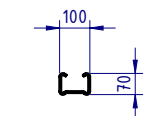


NOTES:

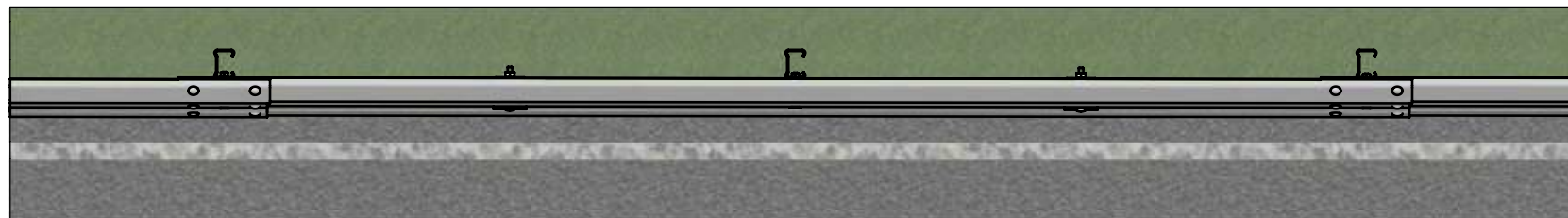
1. RAMSHIELD® TO BE CONSTRUCTED IN ACCORDANCE WITH SAFE DIRECTION ASSEMBLY DRAWING SD-RB-01000.

REVISIONS

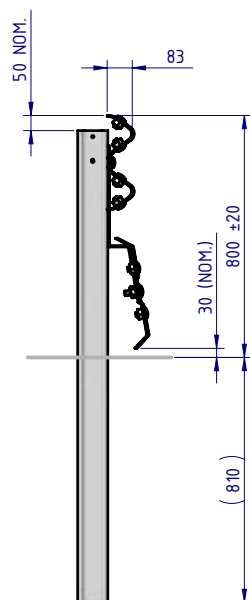
| REV. | ZONE | DESCRIPTION | DATE | APPV'D |
|------|------|-------------------------------------|------------|--------|
| A | | Initial Issue, supersedes GR-WB-121 | 24/05/2022 | HW |



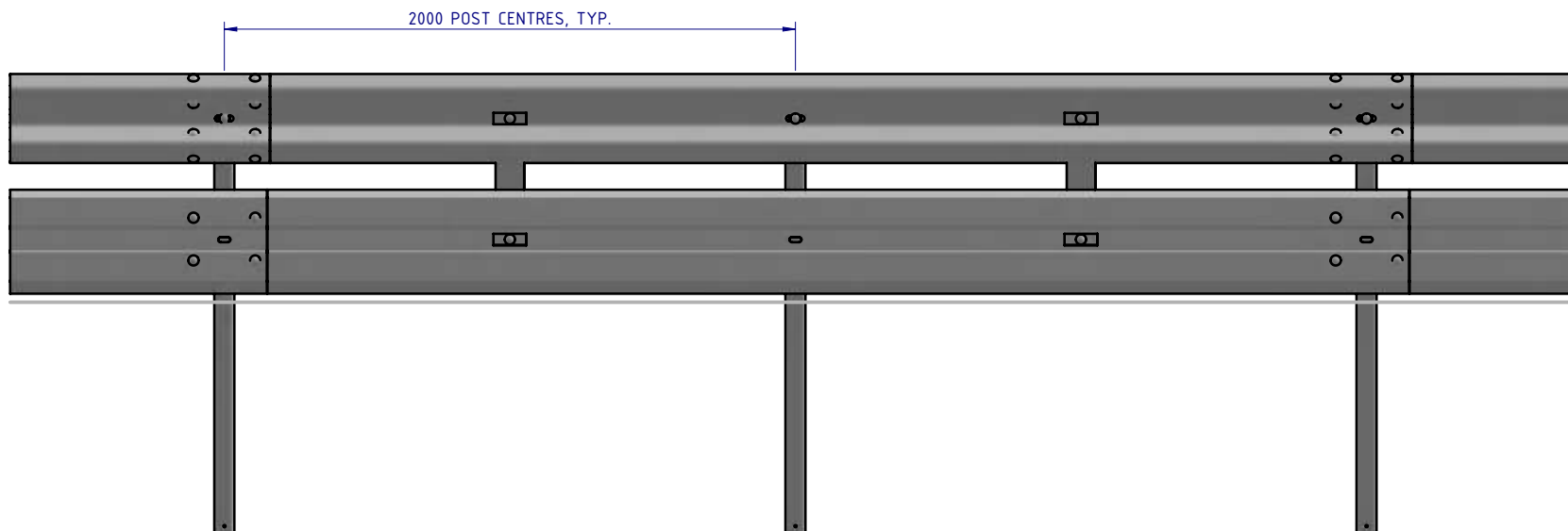
POST PLAN





PLAN VIEW



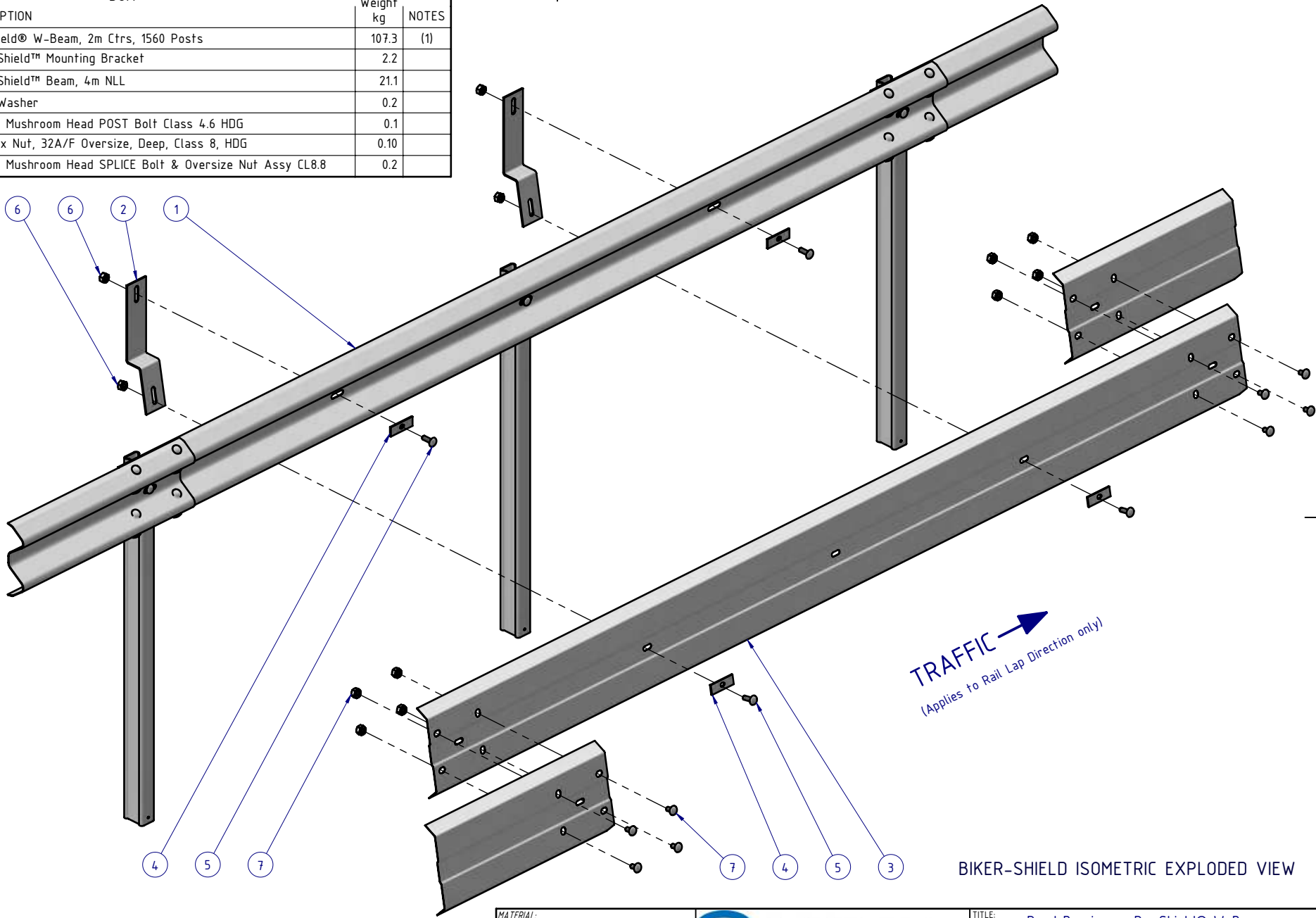
SIDE ELEVATION



FRONT ELEVATION

| | | | | | | | | |
|-----------|--------------|------------|--|---|-----------------|----------------------|----------------------|--------------|
| MATERIAL: | | |  <div>SafeDirection CRASH BARRIER SOLUTIONS</div> | TITLE: Road Barriers - RamShield® W-Beam RamShield® W-Beam, 2m Ctrs, 1560 Posts with Biker-Shield™ General Arrangement | | | | |
| FINISH: | | | | | | | | |
| STATUS | NAME | DATE | COPYRIGHT: All rights reserved. ABN: 53 156 459 684 These drawings, plans and specifications and the copyright therein are the properties of Safe Direction Pty Ltd, and must not be used, reproduced or copied wholly or in part without written permission. | | DWG NO. | REVISION: SHEET SIZE | | |
| DRAWN | W. Rogulski | 23/05/2022 | U.N.O. TOLERANCES: ±1mm ALL DIMENSIONS ARE IN: mm  THIRD ANGLE PROJECTION | | SD-RB-01022 | | A A4 | |
| CHK'D | T. Colquhoun | 24/05/2022 | | | WEIGHT: 144.9kg | | DO NOT SCALE DRAWING | SHEET 1 of 3 |
| APPV'D | H. Wallace | 24/05/2022 | | | SCALE: 1:25 | | | |
| STATUS: | | | APPROVED | | | | | |

| BOM | | | |
|----------|------------------|--|-----------|
| ITEM NO. | PART NUMBER | DESCRIPTION | Weight kg |
| 1 | SD-RB-01000 | RamShield® W-Beam, 2m Ctrs, 1560 Posts | 107.3 |
| 2 | GR-MP-BR-0586-AG | Biker-Shield™ Mounting Bracket | 2.2 |
| 3 | GR-MP-SR-4000-AG | Biker-Shield™ Beam, 4m NLL | 21.1 |
| 4 | GR-MP-FS-0000-AG | Plate Washer | 0.2 |
| 5 | GR-FS-16-0050-MZ | M16x50 Mushroom Head POST Bolt Class 4.6 HDG | 0.1 |
| 6 | GR-FS-16-0000-HG | M16 Hex Nut, 32A/F Oversize, Deep, Class 8, HDG | 0.10 |
| 7 | GR-FS-16-0032-MG | M16x32 Mushroom Head SPLICE Bolt & Oversize Nut Assy CL8.8 | 0.2 |



BIKER-SHIELD ISOMETRIC EXPLODED VIEW

NOTES:

- RAMSHIELD® TO BE CONSTRUCTED IN ACCORDANCE WITH SAFE DIRECTION ASSEMBLY DRAWING SD-RB-01000.

| | | |
|-----------|--------------|------------|
| MATERIAL: | | |
| FINISH: | | |
| STATUS | NAME | DATE |
| DRAWN | W. Rogulski | 23/05/2022 |
| CHK'D | T. Colquhoun | 24/05/2022 |
| APPV'D | H. Wallace | 24/05/2022 |



SafeDirection

CRASH BARRIER SOLUTIONS

COPYRIGHT: All rights reserved. These drawings, plans and specifications and the copyright therein are the properties of Safe Direction Pty Ltd, and must not be used, reproduced or copied wholly or in part without written permission.
ABN: 53 156 459 684

U.N.O: TOLERANCES: ±1mm ALL DIMENSIONS ARE IN: mm

THIRD ANGLE PROJECTION

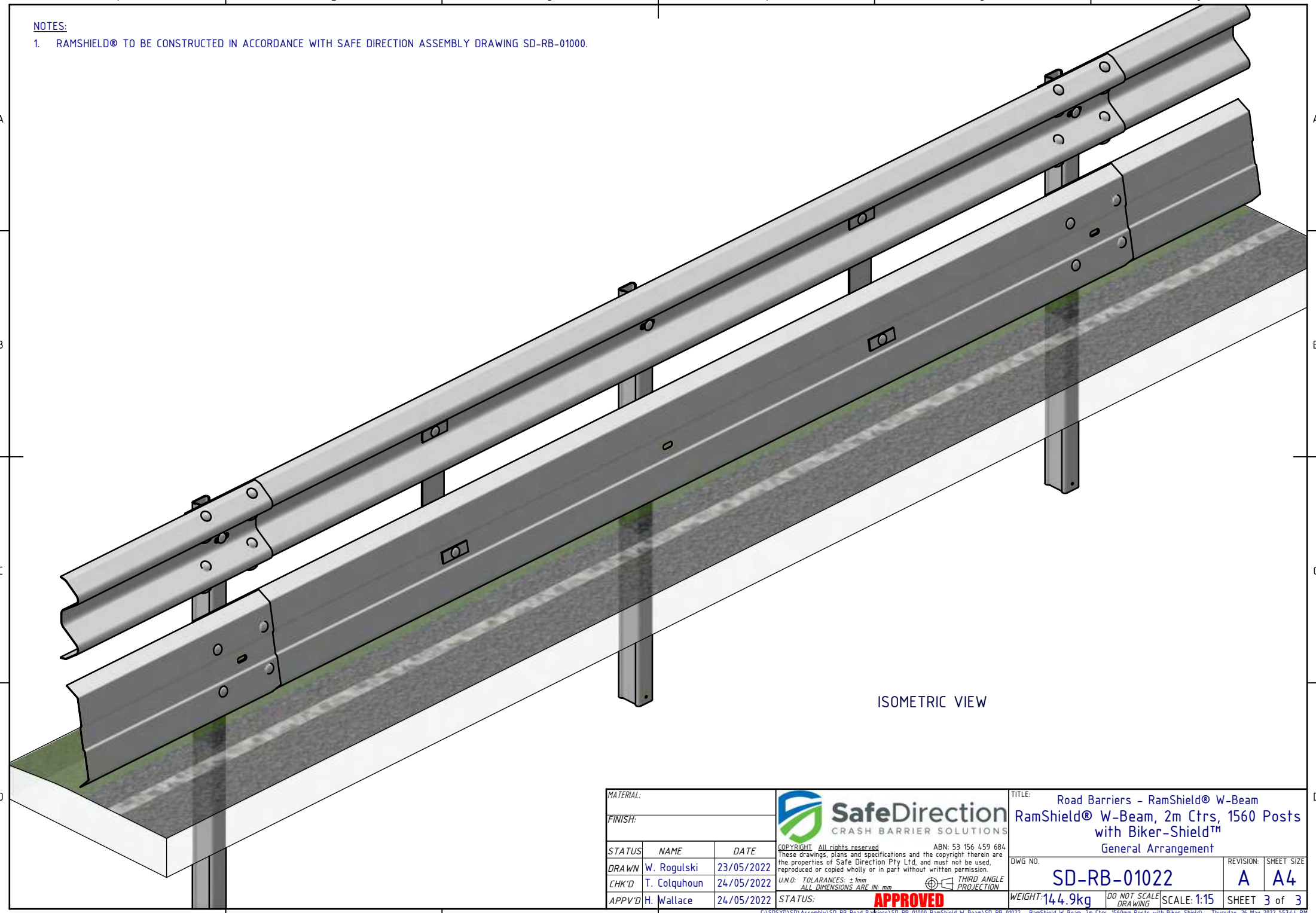
STATUS:

APPROVED



| | | | |
|---|-------------|----------------------|-------------|
| TITLE: Road Barriers - RamShield® W-Beam RamShield® W-Beam, 2m Ctrs, 1560 Posts with Biker-Shield™ General Arrangement | | | |
| DWG NO. | SD-RB-01022 | REVISION: | A |
| WEIGHT: | 144.9kg | DO NOT SCALE DRAWING | SCALE: 1:20 |
| SHEET 2 of 3 | | SHEET 2 of 3 | |

NOTES:

1. RAMSHIELD® TO BE CONSTRUCTED IN ACCORDANCE WITH SAFE DIRECTION ASSEMBLY DRAWING SD-RB-01000.



ISOMETRIC VIEW

| | | | | | | | | | |
|-----------|--------------|------------|--|--|---|----------------------|-------------|--------------|---------------|
| MATERIAL: | | |  SafeDirection CRASH BARRIER SOLUTIONS | | TITLE: Road Barriers - RamShield® W-Beam RamShield® W-Beam, 2m Ctrs, 1560 Posts with Biker-Shield™ General Arrangement | | | | |
| FINISH: | | | | | | | | | |
| STATUS | NAME | DATE | <small>COPYRIGHT: All rights reserved. ABN: 53 156 459 684 These drawings, plans and specifications and the copyright therein are the properties of Safe Direction Pty Ltd, and must not be used, reproduced or copied wholly or in part without written permission. U.N.O: TOLERANCES: ±1mm ALL DIMENSIONS ARE IN: mm</small>  THIRD ANGLE PROJECTION | | DWG NO. | SD-RB-01022 | | REVISION: A | SHEET SIZE A4 |
| DRAWN | W. Rogulski | 23/05/2022 | | | APPROVED | | | | |
| CHK'D | T. Colquhoun | 24/05/2022 | | | | | | | |
| APPV'D | H. Wallace | 24/05/2022 | | | | | | | |
| STATUS: | | | | | WEIGHT: 144.9kg | DO NOT SCALE DRAWING | SCALE: 1:15 | SHEET 3 of 3 | |