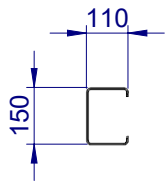
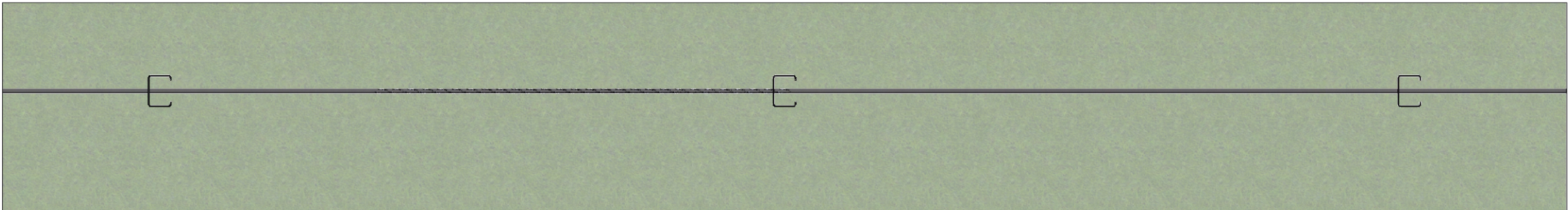


ITEM NO.	PART NUMBER	DESCRIPTION
1	GR-PG-CS-1800-GG	Boundary Fence Intermediate Post, Triple Cable
2	WR-WR-19-1000-AG	Wire rope - \varnothing 19.0mm Heavy Galvanised

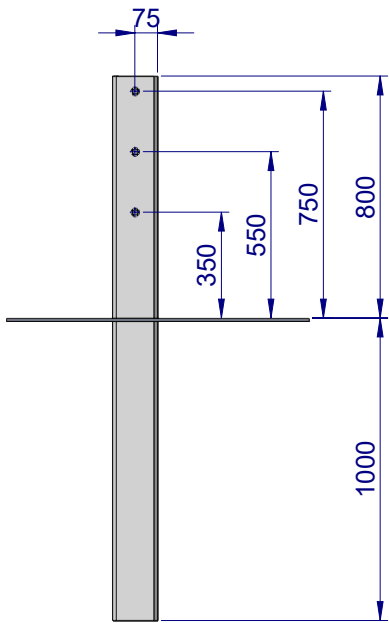
REVISIONS				DATE	APPVD
REV.	ZONE	DESCRIPTION			



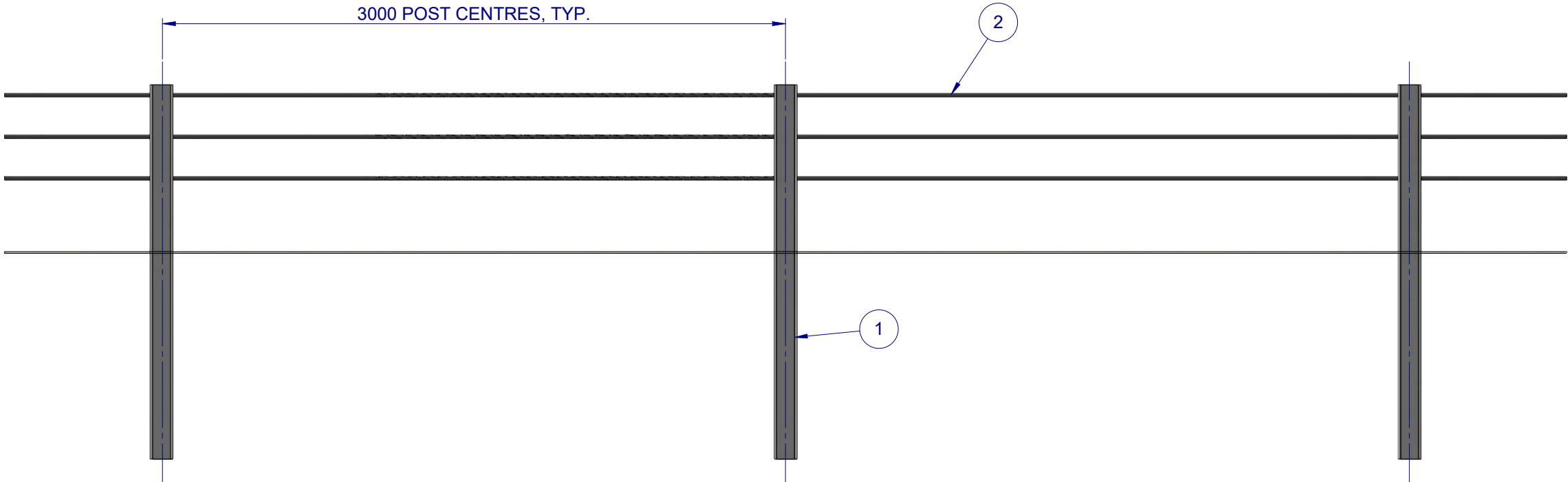
Post Plan



Plan View





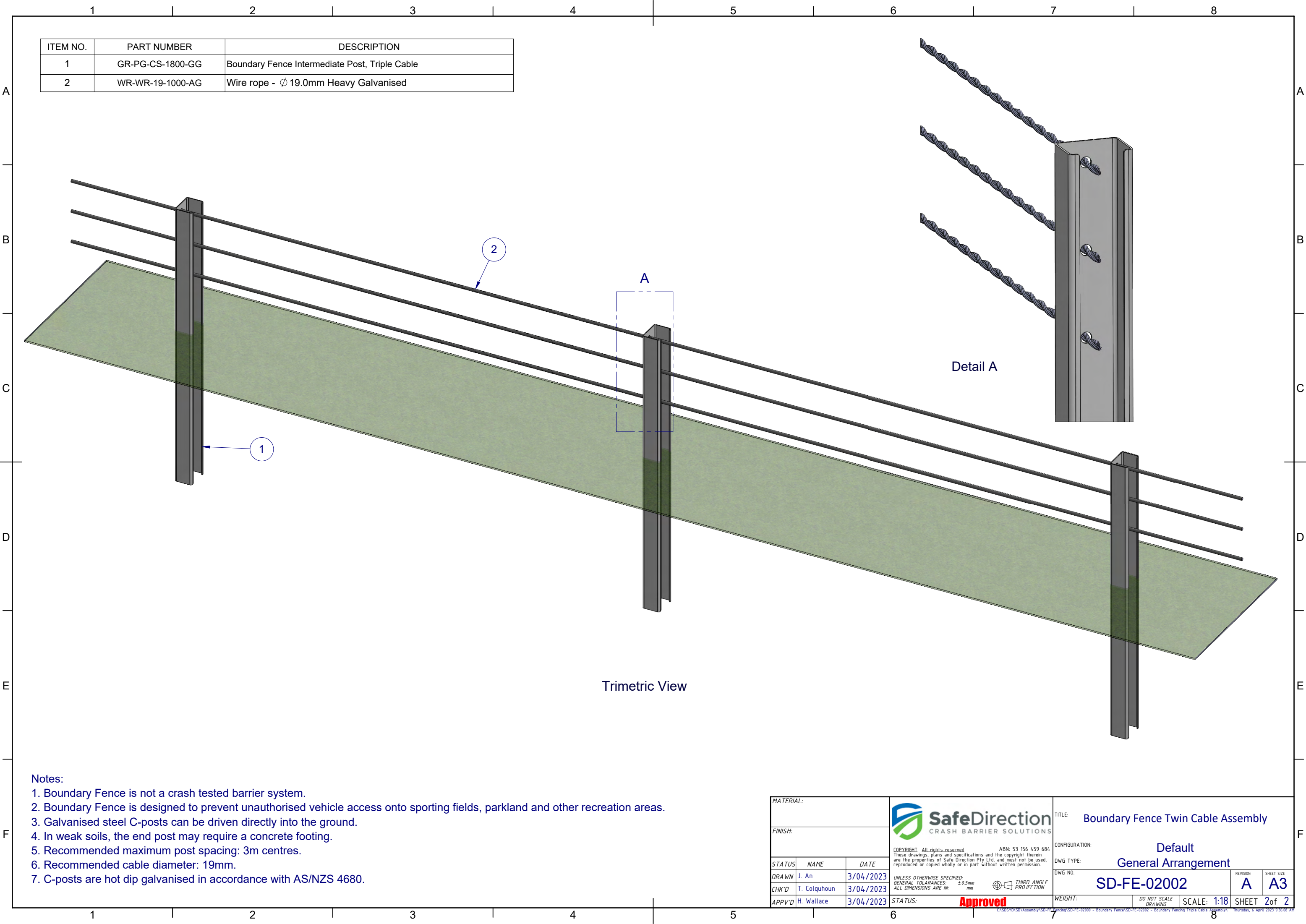
Side Elevation



Front Elevation



- Notes:
- Boundary Fence is not a crash tested barrier system.
 - Boundary Fence is designed to prevent unauthorised vehicle access onto sporting fields, parkland and other recreation areas.
 - Galvanised steel C-posts can be driven directly into the ground.
 - In weak soils, the end post may require a concrete footing.
 - Recommended maximum post spacing: 3m centres.
 - Recommended cable diameter: 19mm.
 - C-posts are hot dip galvanised in accordance with AS/NZS 4680.

MATERIAL:			 <div>SafeDirection CRASH BARRIER SOLUTIONS</div> <div><small>COPYRIGHT All rights reserved ABN: 53 156 459 684</small> <small>These drawings, plans and specifications and the copyright therein are the properties of Safe Direction Pty Ltd, and must not be used, reproduced or copied wholly or in part without written permission.</small></div>		TITLE: Boundary Fencing Triple Cable Assembly		
FINISH:					CONFIGURATION: Default		
STATUS	NAME	DATE	<div><small>UNLESS OTHERWISE SPECIFIED: GENERAL TOLERANCES: ALL DIMENSIONS ARE IN: ±0.5mm mm</small></div> <div> THIRD ANGLE PROJECTION</div>		DWG TYPE: General Arrangement		
DRAWN	J. An	3/04/2023			DWG NO. SD-FE-02002	REVISION: A	
CHK'D	T. Colquhoun	3/04/2023			SHEET SIZE: A3		
APPV'D	H. Wallace	3/04/2023	STATUS: Approved	WEIGHT:	DO NOT SCALE DRAWING	SCALE: 1:25	SHEET 1 of 2



ITEM NO.	PART NUMBER	DESCRIPTION
1	GR-PG-CS-1800-GG	Boundary Fence Intermediate Post, Triple Cable
2	WR-WR-19-1000-AG	Wire rope - \varnothing 19.0mm Heavy Galvanised

- Notes:
1. Boundary Fence is not a crash tested barrier system.
 2. Boundary Fence is designed to prevent unauthorised vehicle access onto sporting fields, parkland and other recreation areas.
 3. Galvanised steel C-posts can be driven directly into the ground.
 4. In weak soils, the end post may require a concrete footing.
 5. Recommended maximum post spacing: 3m centres.
 6. Recommended cable diameter: 19mm.
 7. C-posts are hot dip galvanised in accordance with AS/NZS 4680.

MATERIAL:			 SafeDirection CRASH BARRIER SOLUTIONS	TITLE: Boundary Fence Twin Cable Assembly			
FINISH:							
			COPYRIGHT All rights reserved ABN: 53 156 459 684 These drawings, plans and specifications and the copyright therein are the properties of Safe Direction Pty Ltd, and must not be used, reproduced or copied wholly or in part without written permission.	CONFIGURATION: Default			
				DWG TYPE: General Arrangement			
STATUS	NAME	DATE	UNLESS OTHERWISE SPECIFIED: GENERAL TOLERANCES: ALL DIMENSIONS ARE IN: ±0.5mm mm  THIRD ANGLE PROJECTION	DWG NO. SD-FE-02002		REVISION: A	SHEET SIZE: A3
DRAWN	J. An	3/04/2023					
CHK'D	T. Colquhoun	3/04/2023					
APPV'D	H. Wallace	3/04/2023					
STATUS: Approved			WEIGHT:		DO NOT SCALE DRAWING	SCALE: 1:18	SHEET 2 of 2