

ITEM NO.	PART NUMBER	DESCRIPTION
1	GR-PG-CS-1800-EG	Boundary Fence End Post, Twin Cable
2	GR-PG-CS-1800-DG	Boundary Fence Intermediate Post, Twin Cable
3	WR-WR-19-1000-AG	Wire rope - \varnothing 19.0mm Heavy Galvanised
4	GE-EF-MX-0026-AG	20mm Wire Rope Grip


REVISIONS				DATE	APPVD
REV.	ZONE	DESCRIPTION			

- Notes:
- Boundary Fence is not a crash tested barrier system.
 - Boundary Fence is designed to prevent unauthorised vehicle access onto sporting fields, parkland and other recreation areas.
 - Galvanised steel C-posts can be driven directly into the ground.
 - In weak soils, the end post may require a concrete footing.
 - Recommended maximum post spacing: 3m centres.
 - Recommended cable diameter: 19mm.
 - C-posts are hot dip galvanised in accordance with AS/NZS 4680.

MATERIAL:

FINISH:

STATUS	NAME	DATE
DRAWN	J. An	3/04/2023
CHK'D	T. Colquhoun	3/04/2023
APPV'D	H. Wallace	3/04/2023

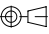


SafeDirection
CRASH BARRIER SOLUTIONS

COPYRIGHT: All rights reserved. These drawings, plans and specifications and the copyright therein are the properties of Safe Direction Pty Ltd, and must not be used, reproduced or copied wholly or in part without written permission.

ABN: 53 156 459 684

UNLESS OTHERWISE SPECIFIED:
GENERAL TOLERANCES: \pm 0.5mm
ALL DIMENSIONS ARE IN: mm

 **THIRD ANGLE
PROJECTION**

STATUS: **Approved**

DO NOT SCALE
DRAWING

SCALE: 1:20

TITLE:
Boundary Fence Twin Cable End Post Assembly

CONFIGURATION:
Default

DWG TYPE:
General Arrangement

DWG NO.
SD-FE-02001

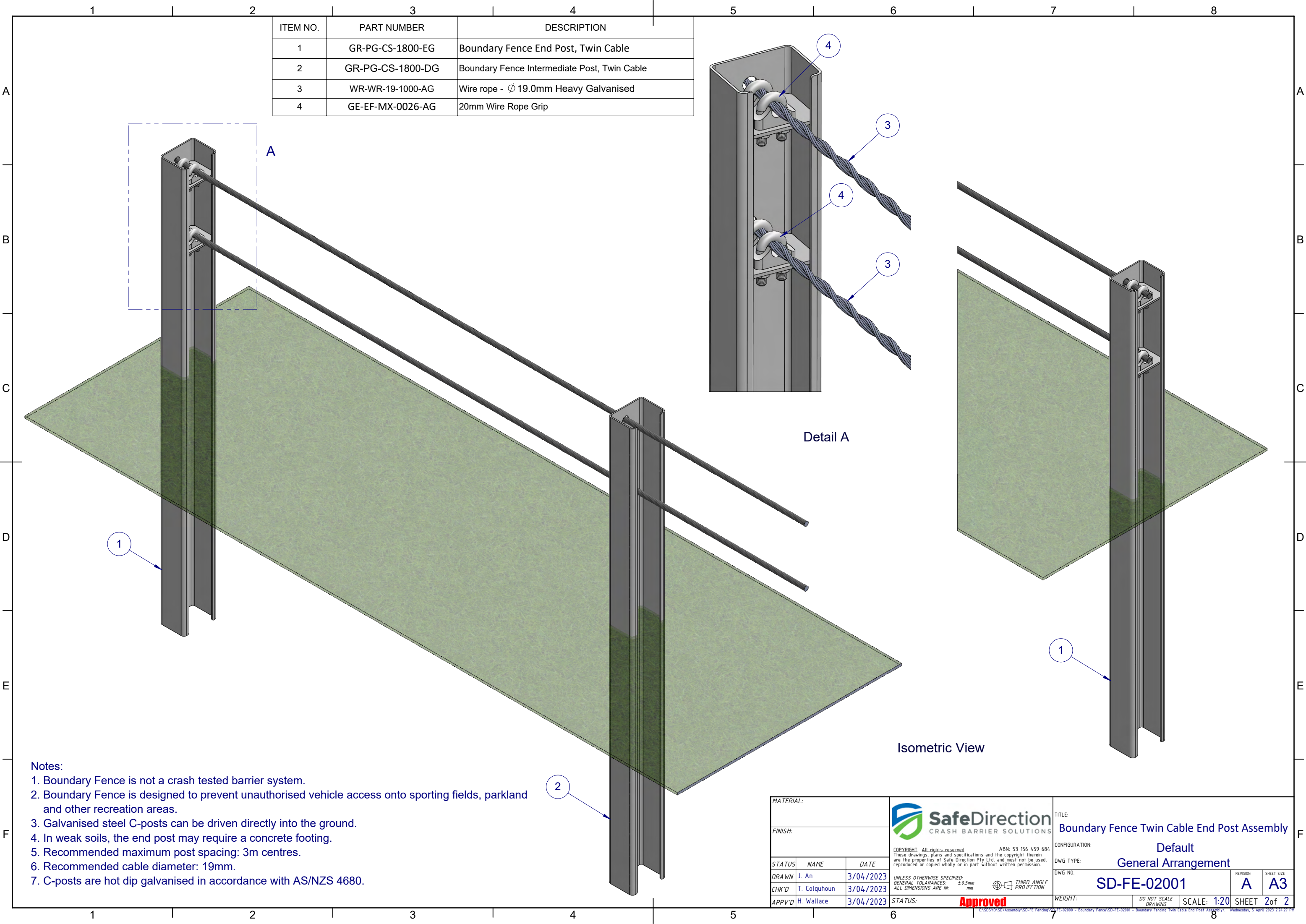
WEIGHT:

REVISION:
A

SHEET SIZE:
A3

SHEET 1 of 2

C:\SDSYD\SD\Assembly\SD-FE-Fencing\SD-FE-02000 - Boundary Fence\SD-FE-02001 - Boundary Fencing Twin Cable End Post Assembly\ Wednesday, 5 April 2023 2:24:27 PM




ITEM NO.	PART NUMBER	DESCRIPTION
1	GR-PG-CS-1800-EG	Boundary Fence End Post, Twin Cable
2	GR-PG-CS-1800-DG	Boundary Fence Intermediate Post, Twin Cable
3	WR-WR-19-1000-AG	Wire rope - \varnothing 19.0mm Heavy Galvanised
4	GE-EF-MX-0026-AG	20mm Wire Rope Grip

Detail A

Isometric View

- Notes:
- 1. Boundary Fence is not a crash tested barrier system.
 - 2. Boundary Fence is designed to prevent unauthorised vehicle access onto sporting fields, parkland and other recreation areas.
 - 3. Galvanised steel C-posts can be driven directly into the ground.
 - 4. In weak soils, the end post may require a concrete footing.
 - 5. Recommended maximum post spacing: 3m centres.
 - 6. Recommended cable diameter: 19mm.
 - 7. C-posts are hot dip galvanised in accordance with AS/NZS 4680.

MATERIAL:			 SafeDirection CRASH BARRIER SOLUTIONS	TITLE: Boundary Fence Twin Cable End Post Assembly				
FINISH:				CONFIGURATION: Default				
STATUS			DWG TYPE: General Arrangement					
DRAWN	J. An	3/04/2023	DWG NO. SD-FE-02001				REVISION: A	SHEET SIZE: A3
CHK'D	T. Colquhoun	3/04/2023	UNLESS OTHERWISE SPECIFIED: GENERAL TOLERANCES: ALL DIMENSIONS ARE IN: ±0.5mm mm				THIRD ANGLE PROJECTION	
APPV'D	H. Wallace	3/04/2023	STATUS: Approved				WEIGHT: DO NOT SCALE DRAWING	
							SCALE: 1:20	SHEET 2 of 2