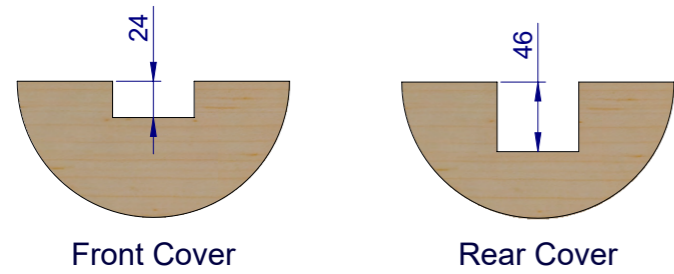
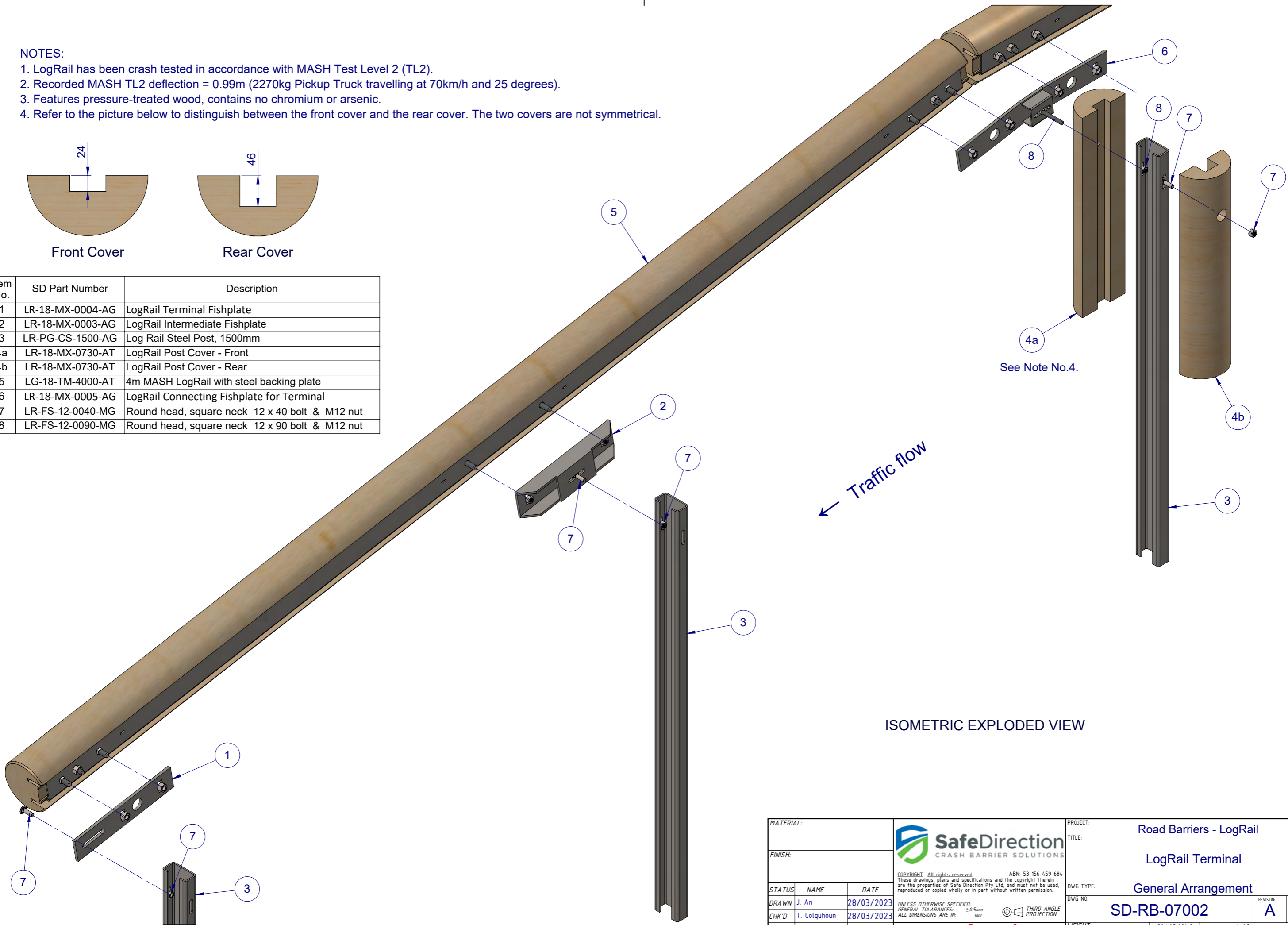



- NOTES:
- 1. LogRail has been crash tested in accordance with MASH Test Level 2 (TL2).
 - 2. Recorded MASH TL2 deflection = 0.99m (2270kg Pickup Truck travelling at 70km/h and 25 degrees).
 - 3. Features pressure-treated wood, contains no chromium or arsenic.
 - 4. Refer to the picture below to distinguish between the front cover and the rear cover. The two covers are not symmetrical.



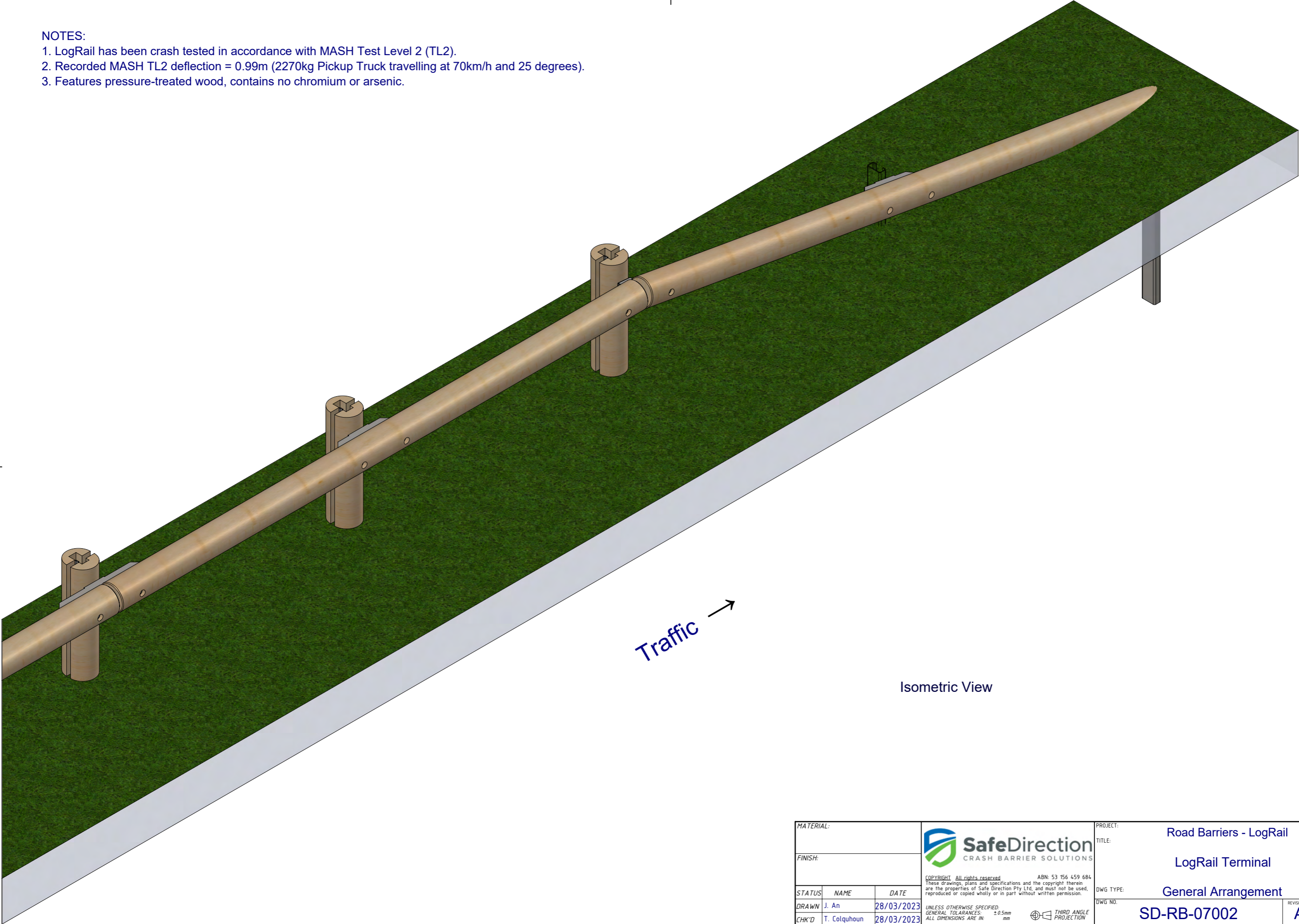
Item No.	SD Part Number	Description
1	LR-18-MX-0004-AG	LogRail Terminal Fishplate
2	LR-18-MX-0003-AG	LogRail Intermediate Fishplate
3	LR-PG-CS-1500-AG	Log Rail Steel Post, 1500mm
4a	LR-18-MX-0730-AT	LogRail Post Cover - Front
4b	LR-18-MX-0730-AT	LogRail Post Cover - Rear
5	LG-18-TM-4000-AT	4m MASH LogRail with steel backing plate
6	LR-18-MX-0005-AG	LogRail Connecting Fishplate for Terminal
7	LR-FS-12-0040-MG	Round head, square neck 12 x 40 bolt & M12 nut
8	LR-FS-12-0090-MG	Round head, square neck 12 x 90 bolt & M12 nut



ISOMETRIC EXPLODED VIEW



MATERIAL:			 <div>SafeDirection CRASH BARRIER SOLUTIONS</div> <div><small>COPYRIGHT: All rights reserved ABN: 53 156 459 684</small> <small>These drawings, plans and specifications and the copyright therein are the properties of Safe Direction Pty Ltd, and must not be used, reproduced or copied wholly or in part without written permission.</small></div>	PROJECT: Road Barriers - LogRail		
FINISH:				TITLE: LogRail Terminal		
STATUS	NAME	DATE	DWG TYPE: General Arrangement			
DRAWN	J. An	28/03/2023	DWG NO. SD-RB-07002			
CHK'D	T. Colquhoun	28/03/2023	REVISION: A			
APPV'D	H. Wallace	28/03/2023	SHEET SIZE A3			
			UNLESS OTHERWISE SPECIFIED: GENERAL TOLERANCES: ± 0.5mm ALL DIMENSIONS ARE IN: mm			
			THIRD ANGLE PROJECTION			
			STATUS: Approved			
			WEIGHT: DO NOT SCALE			
			DRAWING SCALE: 1:10			
			SHEET 2 of 3			

NOTES:
1. LogRail has been crash tested in accordance with MASH Test Level 2 (TL2).
2. Recorded MASH TL2 deflection = 0.99m (2270kg Pickup Truck travelling at 70km/h and 25 degrees).
3. Features pressure-treated wood, contains no chromium or arsenic.



Traffic →

Isometric View

MATERIAL:			 <div>SafeDirection CRASH BARRIER SOLUTIONS</div> <div><small>COPYRIGHT All rights reserved</small> <small>ABN: 53 156 459 684</small> These drawings, plans and specifications and the copyright therein are the properties of Safe Direction Pty Ltd, and must not be used, reproduced or copied wholly or in part without written permission.</div>	PROJECT: Road Barriers - LogRail			
FINISH:				TITLE: LogRail Terminal			
STATUS	NAME	DATE	<div><small>UNLESS OTHERWISE SPECIFIED: GENERAL TOLERANCES: ALL DIMENSIONS ARE IN: ± 0.5mm mm</small></div> <div> THIRD ANGLE PROJECTION</div>	DWG TYPE: General Arrangement			
DRAWN	J. An	28/03/2023		DWG NO. SD-RB-07002		REVISION: A	SHEET SIZE: A3
CHK'D	T. Colquhoun	28/03/2023					
APPV'D	H. Wallace	28/03/2023					
STATUS: Approved			WEIGHT: DO NOT SCALE DRAWING SCALE: 1:20 SHEET 3 of 3				