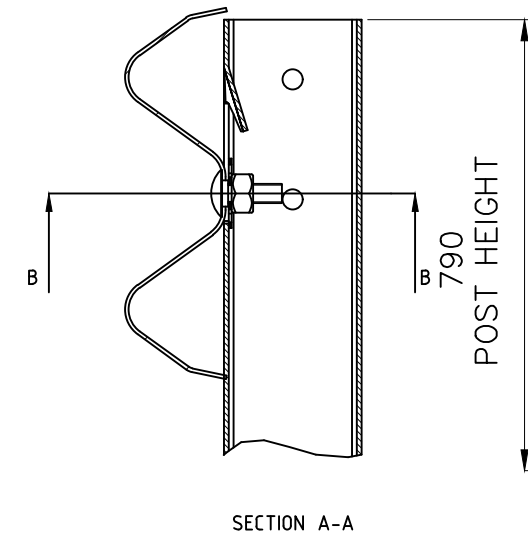
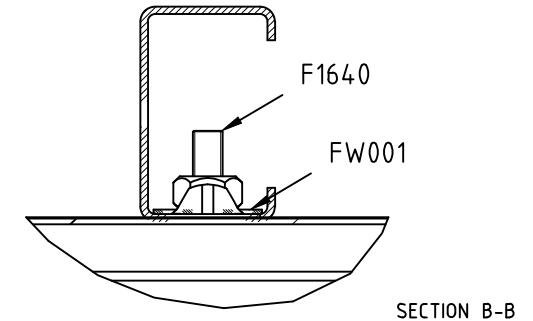
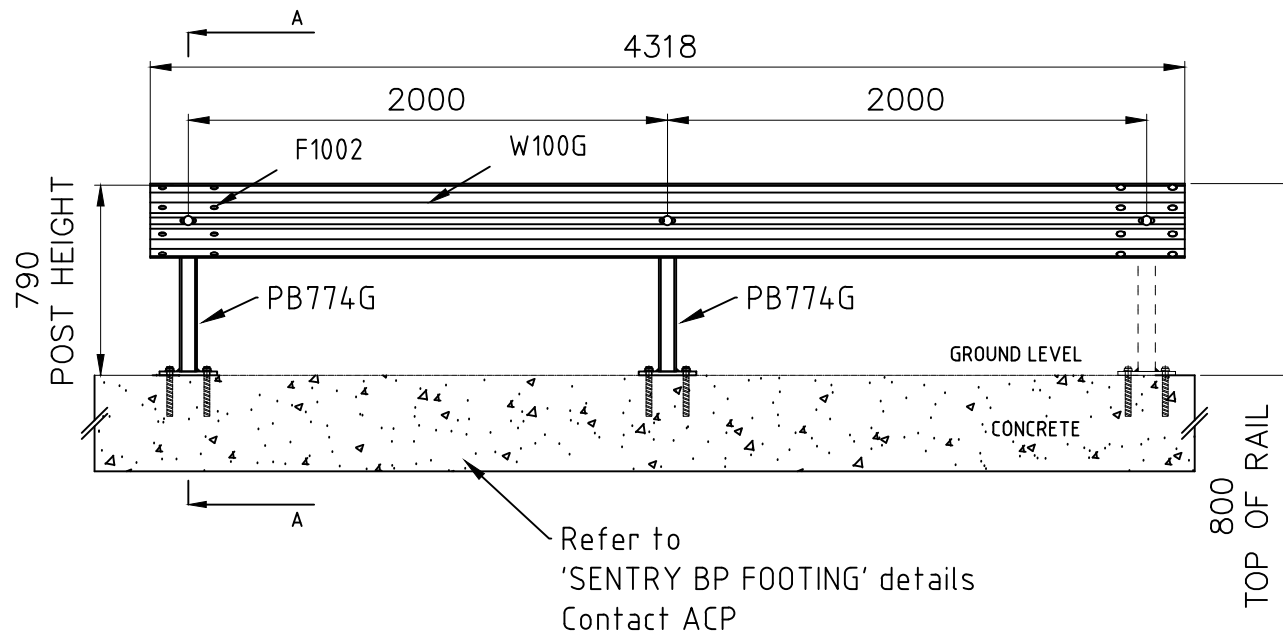


INDEX	PART/DRAWING	DESCRIPTION	QTY
1	PB774G	ACP SENTRY POST ON 16MM BASE PLATE	2
2	FW001	ACP SENTRY WASHER	2
3	F1002	M16x32 SPLICE BOLT AND NUT FOR RAIL CONNECTION	8
4	F1640	M16x40 POST BOLT AND OVERSIZED NUT	2
5	W100G	4.0M STANDARD W-BEAM	1



Australian Construction Products Pty Ltd  
339 Horsley Road Milperra NSW 2214  
P.O. Box 565 Panania NSW 2213  
Tel: +61 2 9772 4172 Fax: +61 2 9792 6272

#### TOLERANCES

Whole Numbers  $\pm 2$   
One Decimal Place  $\pm 0.05$   
Bend Angle :  $\pm 2$   
Straightness :  $1.5\text{per}1500$

Scale: N.T.S.

#### CLIENT

MATERIAL  
STEEL TO AS/NZS 1594

FINISH  
PRETREATMENT TO AS 1627  
HOT DIP GALVANISE TO AS/NZS 4680

ITEM  
ACP SENTRY BARRIER W BEAM SYSTEM  
ON BASEPLATE ARRANGEMENT

DRAWING NUMBER  
**GA087BP**

DRAWN W.R.	CHECKED E.A.	APPROVED
---------------	-----------------	----------

A	ORIGINAL ISSUE		W.R.	20.07.22	
REV	DESCRIPTION		APPD	DATE	