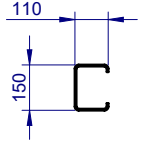
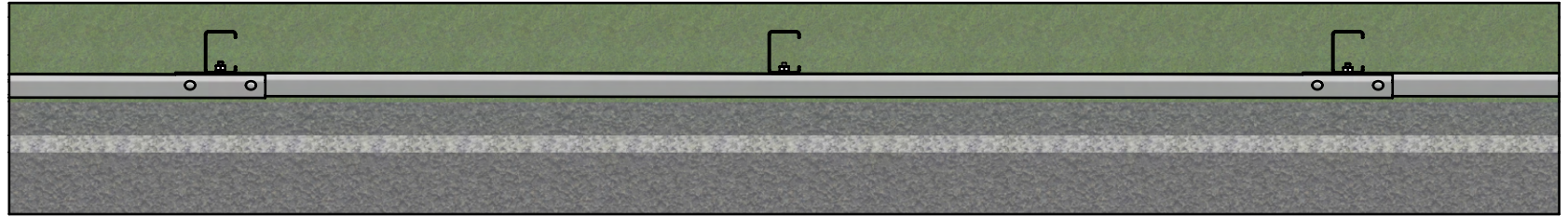


- NOTES:
- RamShield® High Containment (HC) has been crash tested in accordance with MASH Test Level 4 (TL4) and Test Level 3 (TL3).
 - Recorded MASH TL4 deflection = 1.1m (10,000kg Rigid Truck travelling at 90km/h and 15 degrees).
 - Recorded MASH TL3 deflection = 1.0m (2270kg Pickup Truck travelling at 100km/h and 25 degrees).

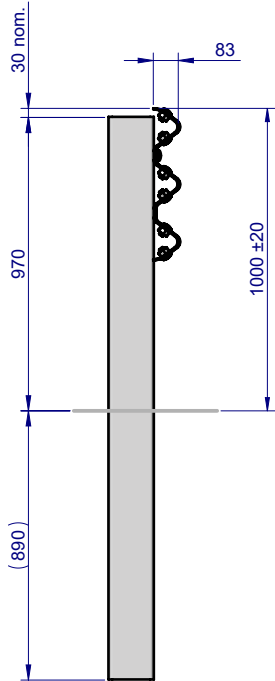
| REVISIONS | | | | |
|-----------|------|-------------------------------------|------------|--------|
| REV. | ZONE | DESCRIPTION | DATE | APPV'D |
| A | | Initial Issue, supersedes GR-TB-001 | 20/06/2022 | HW |
| A | | Initial Issue, supersedes GR-TB-001 | 18/10/2022 | HW |
| B | | REVISION UPDATED | 18/10/2022 | HW |



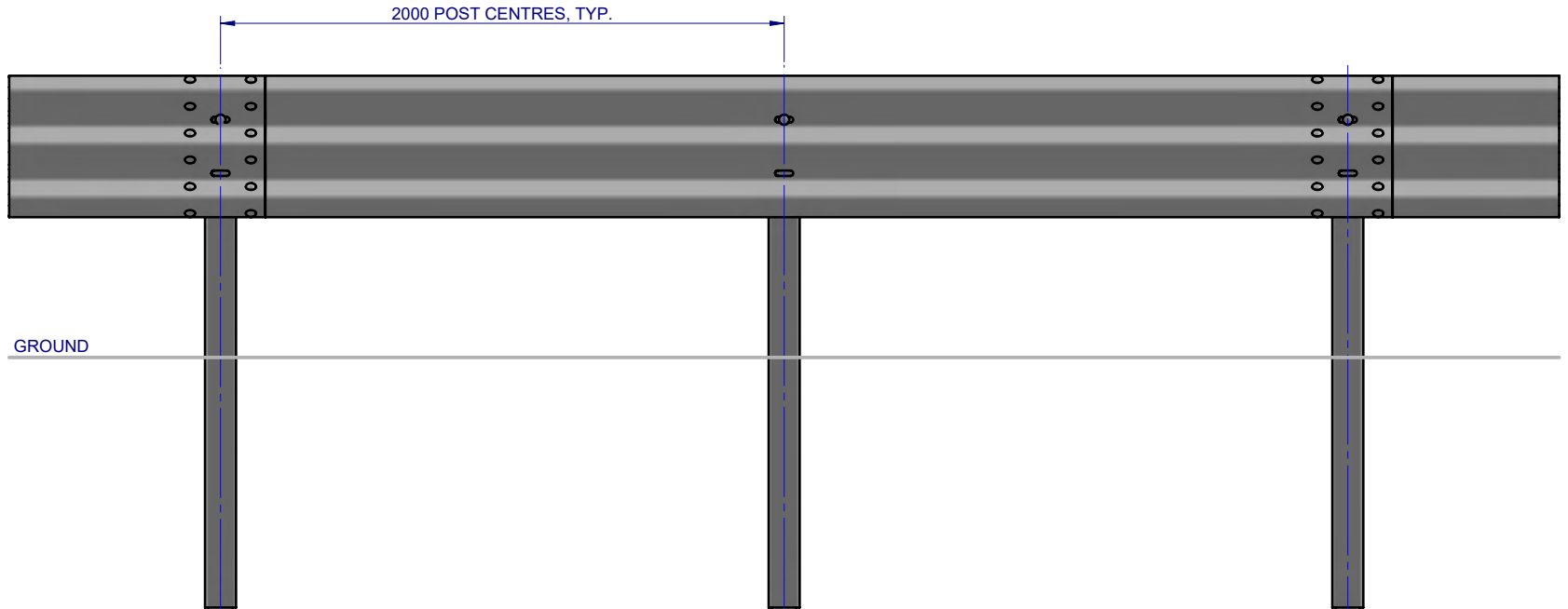
POST PLAN



PLAN VIEW



SIDE ELEVATION



FRONT ELEVATION

| ITEM NO. | PART NUMBER | DESCRIPTION | Weight kg | NOTES |
|----------|------------------|--|-----------|-------|
| 1 | GR-PG-CS-1860-AG | RamShield® High Containment Post 1860mm | 23.9 | |
| 2 | GR-TB-SR-4000-AG | Thrie-Beam Guardrail; 2.7mm BMT 4.0m NLL, 2.0m CTRS | 67.0 | |
| 3 | GR-FS-16-0050-MG | M16x50 Mushroom Head POST Bolt & Oversize Nut Assy Class 4.6 | 0.2 | |
| 4 | GR-FS-16-0032-MG | M16x32 Mushroom Head SPLICE Bolt & Oversize Nut Assy CL8.8 | 0.2 | |

| | | |
|-----------|--------------|------------|
| MATERIAL: | | |
| FINISH: | | |
| STATUS | NAME | DATE |
| DRAWN | W. Rogulski | 20/06/2022 |
| CHK'D | T. Colquhoun | 18/10/2022 |
| APPV'D | H. Wallace | 18/10/2022 |

SafeDirection
CRASH BARRIER SOLUTIONS

ABN: 53 156 459 684

COPYRIGHT All rights reserved. These drawings, plans and specifications and the copyright therein are the properties of Safe Direction Pty Ltd. and must not be used, reproduced or copied wholly or in part without written permission.

U.N.O. TOLERANCES: ± 1mm
ALL DIMENSIONS ARE IN: mm

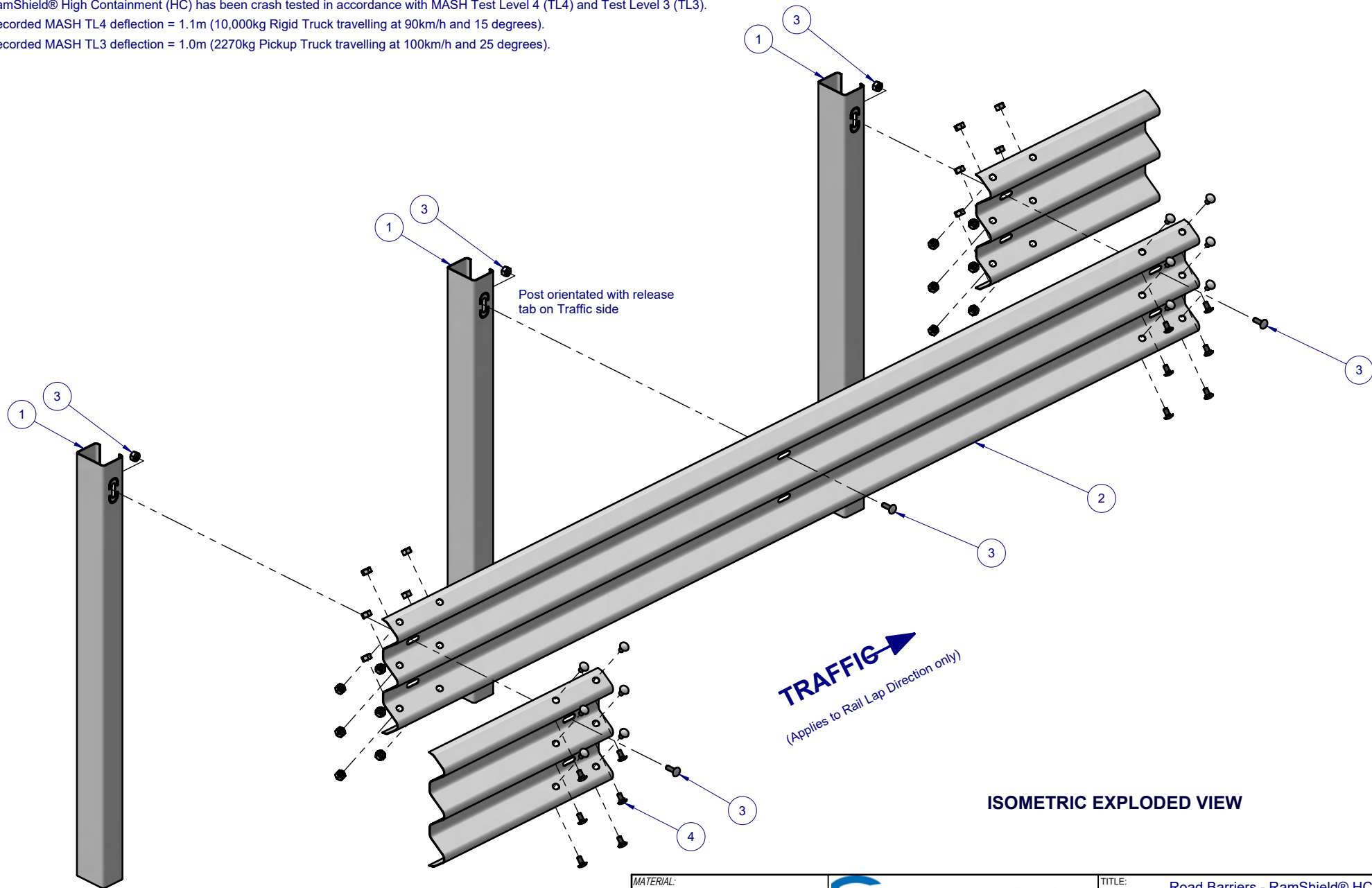
THIRD ANGLE PROJECTION


STATUS: **APPROVED**

| | | | |
|--|-------------|----------------------|-------------|
| TITLE: Road Barriers - RamShield® HC RamShield® HC, 2m Ctrs, 1860mm Posts General Arrangement | | | |
| DWG NO. | SD-RB-02000 | REVISION | SHEET SIZE |
| | | B | A4 |
| WEIGHT | 172.3kg | DO NOT SCALE DRAWING | SCALE: 1:25 |
| SHEET 1 of 3 | | | |

NOTES:

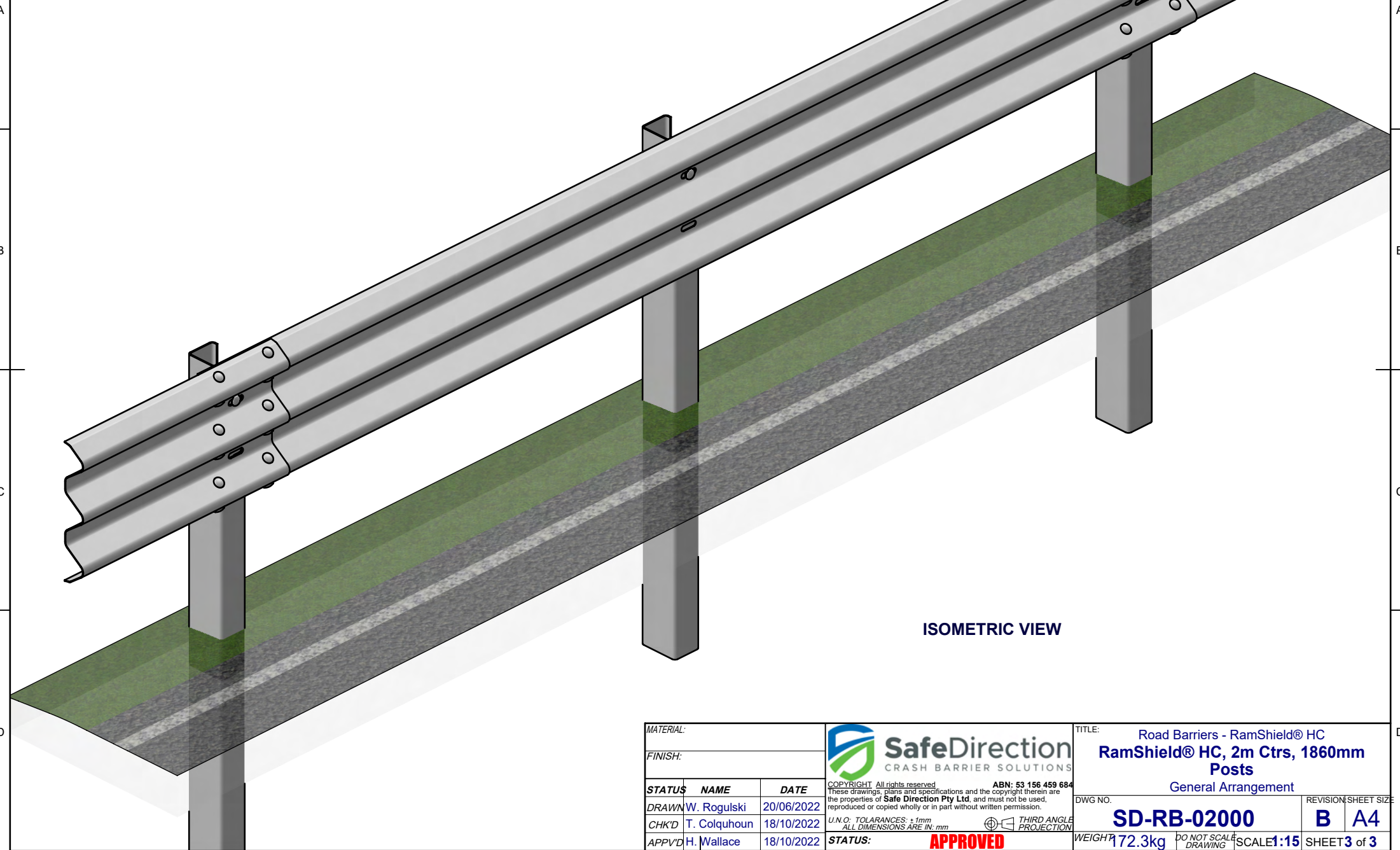
1. RamShield® High Containment (HC) has been crash tested in accordance with MASH Test Level 4 (TL4) and Test Level 3 (TL3).
2. Recorded MASH TL4 deflection = 1.1m (10,000kg Rigid Truck travelling at 90km/h and 15 degrees).
3. Recorded MASH TL3 deflection = 1.0m (2270kg Pickup Truck travelling at 100km/h and 25 degrees).



| | | | | | | |
|-----------|--------------|------------|---|---|----------------------|--|
| MATERIAL: | | |  <div>SafeDirection CRASH BARRIER SOLUTIONS</div> | TITLE: Road Barriers - RamShield® HC RamShield® HC, 2m Ctrs, 1860mm Posts General Arrangement | | |
| FINISH: | | | | DWG NO. SD-RB-02000 | | |
| STATUS | NAME | DATE | <div>COPYRIGHT All rights reserved ABN: 53 156 459 684</div> <div>These drawings, plans and specifications and the copyright therein are the properties of Safe Direction Pty Ltd, and must not be used, reproduced or copied wholly or in part without written permission.</div> <div>U.N.O. TOLERANCES: ± 1mm ALL DIMENSIONS ARE IN: mm</div> <div>THIRD ANGLE PROJECTION</div> <div>STATUS: APPROVED</div> | REVISION SHEET SIZE | | |
| DRAWN | W. Rogulski | 20/06/2022 | | B A4 | | |
| CHK'D | T. Colquhoun | 18/10/2022 | | SCALE: 1:20 | | |
| APP'VD | H. Wallace | 18/10/2022 | | SHEET 2 of 3 | | |
| | | | WEIGHT | 172.3kg | DO NOT SCALE DRAWING | |

C:\SDS\SDS\assembly\SD-RB Road Barriers\SD-RB-02000 RamShield HC\SD-RB-02000 - RamShield HC, 2m Ctrs, 1860mm Post - Tuesday, 18 October 2022 2:08:43 PM

- NOTES:
- 1. RamShield® High Containment (HC) has been crash tested in accordance with MASH Test Level 4 (TL4) and Test Level 3 (TL3).
 - 2. Recorded MASH TL4 deflection = 1.1m (10,000kg Rigid Truck travelling at 90km/h and 15 degrees).
 - 3. Recorded MASH TL3 deflection = 1.0m (2270kg Pickup Truck travelling at 100km/h and 25 degrees).



ISOMETRIC VIEW

| | | | | | | | | |
|-----------|--------------|------------|--|--|--|---|--|--|
| MATERIAL: | | |  <div>SafeDirection</div> CRASH BARRIER SOLUTIONS | | | TITLE: Road Barriers - RamShield® HC RamShield® HC, 2m Ctrs, 1860mm Posts General Arrangement | | |
| FINISH: | | | | | | DWG NO. SD-RB-02000 | | |
| STATUS | NAME | DATE | COPYRIGHT All rights reserved. ABN: 53 156 459 684 These drawings, plans and specifications and the copyright therein are the properties of Safe Direction Pty Ltd, and must not be used, reproduced or copied wholly or in part without written permission. U.N.O. TOLERANCES: ± 1mm ALL DIMENSIONS ARE IN: mm | | | DO NOT SCALE DRAWING | | |
| DRAWN | W. Rogulski | 20/06/2022 | | | | WEIGHT 172.3kg | | |
| CHK'D | T. Colquhoun | 18/10/2022 |  THIRD ANGLE PROJECTION | | | SCALE 1:15 | | |
| APPV'D | H. Wallace | 18/10/2022 | | | | SHEET 3 of 3 | | |
| | | | STATUS: APPROVED | | | | | |