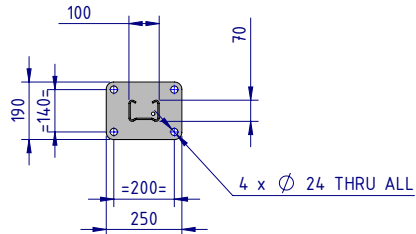


# NOTES:

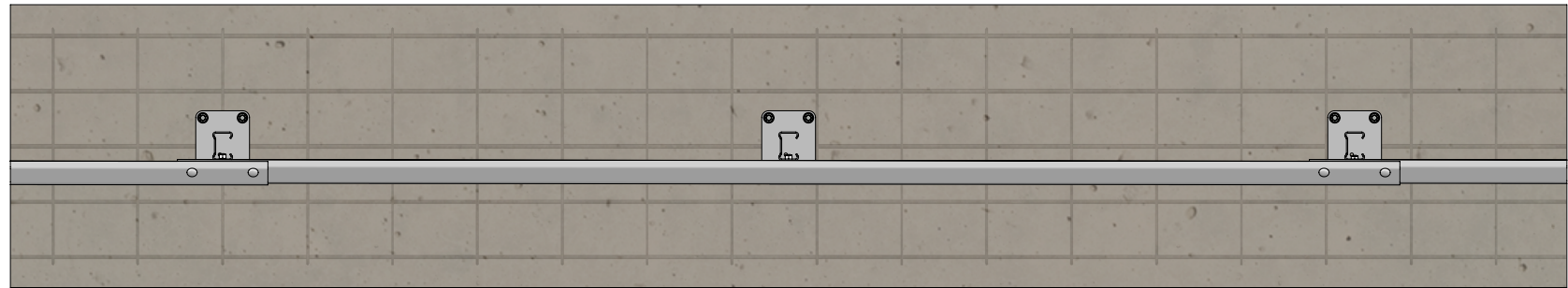
- The W-Beam guardrail panel may be bolted to the Post using a M16x32mm or M16x50mm Mushroom Head Bolt, with a standard or oversize M16 Hex Nut.
- Anchor assembly to comprise one of the following options:
  - Four (4) off M20x187mm Galvanised Fischer FBN II (as shown). Minimum embedment depth of 145mm, each anchor torqued to 200Nm.
  - Four (4) off M20 Galvanised Rods Class 8.8. Minimum embedment depth of 170mm, secured with Fischer FIS SB 390 S. Each anchor torqued to 120Nm.

## REVISIONS

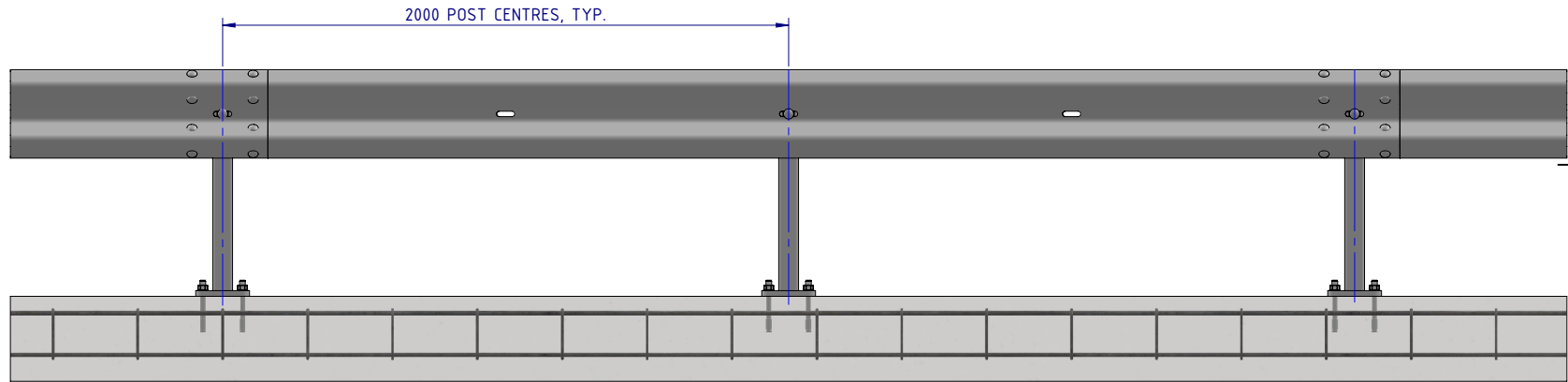
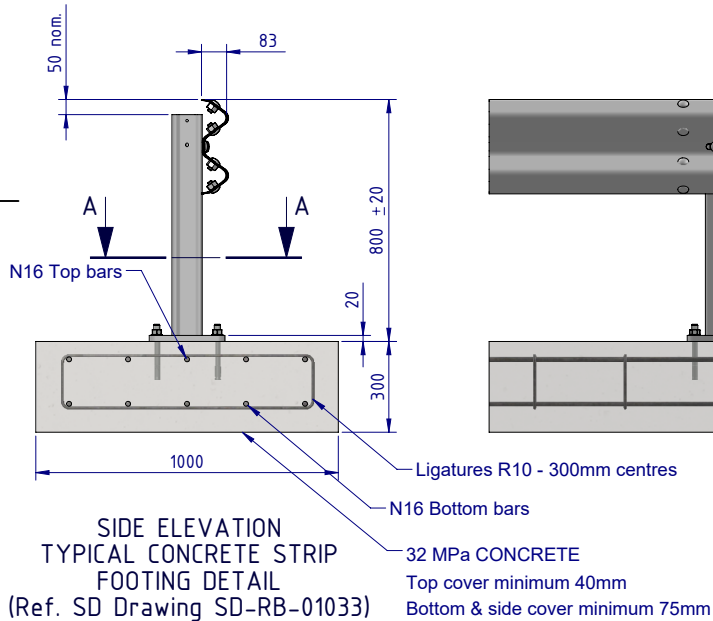
REV.	ZONE	DESCRIPTION	DATE	APPV'D
A		Initial Issue, supersedes GR-WB-093		
B		Updated footing detail	19/04/2023	HW



SECTION A-A  
BASEPLATE DETAIL




PLAN VIEW



FRONT ELEVATION

ITEM NO.	PART NUMBER	DESCRIPTION	Weight kg	NOTES
1	GR-PB-SS-0750-AG	RamShield® Post on Baseplate 750mm	13.6	
2	GR-WB-SR-4000-CG	W-Beam Guardrail 4.0M NLL, 1.0M CTRS	43.3	
3	GR-FS-16-0032-MZ	M16x32 Mushroom Head SPLICE Bolt Class 8.8 HDG	0.1	(1)
4	GR-FS-16-0000-NG	M16 Hex Nut, Class 5, HDG	0.04	(1)
5	GR-FS-16-0032-MG	M16x32 Mushroom Head SPLICE Bolt & Oversize Nut Assy CL8.8	0.2	
6	GR-FS-20-0187-HG	FISCHER FBN II, M20x187mm	0.5	(2)

MATERIAL:			 <div>SafeDirection</div> CRASH BARRIER SOLUTION
FINISH:			
STATUS	NAME	DATE	
DRAWN	W. Rogulski	17/05/2022	
CHK'D	T. Colquhoun	24/05/2022	
APPV'D	H. Wallace	24/05/2022	STATUS:

COPYRIGHT: All rights reserved. ABN: 53 156 459 614  
These drawings, plans and specifications and the copyright therein are the properties of Safe Direction Pty Ltd, and must not be used, reproduced or copied wholly or in part without written permission.

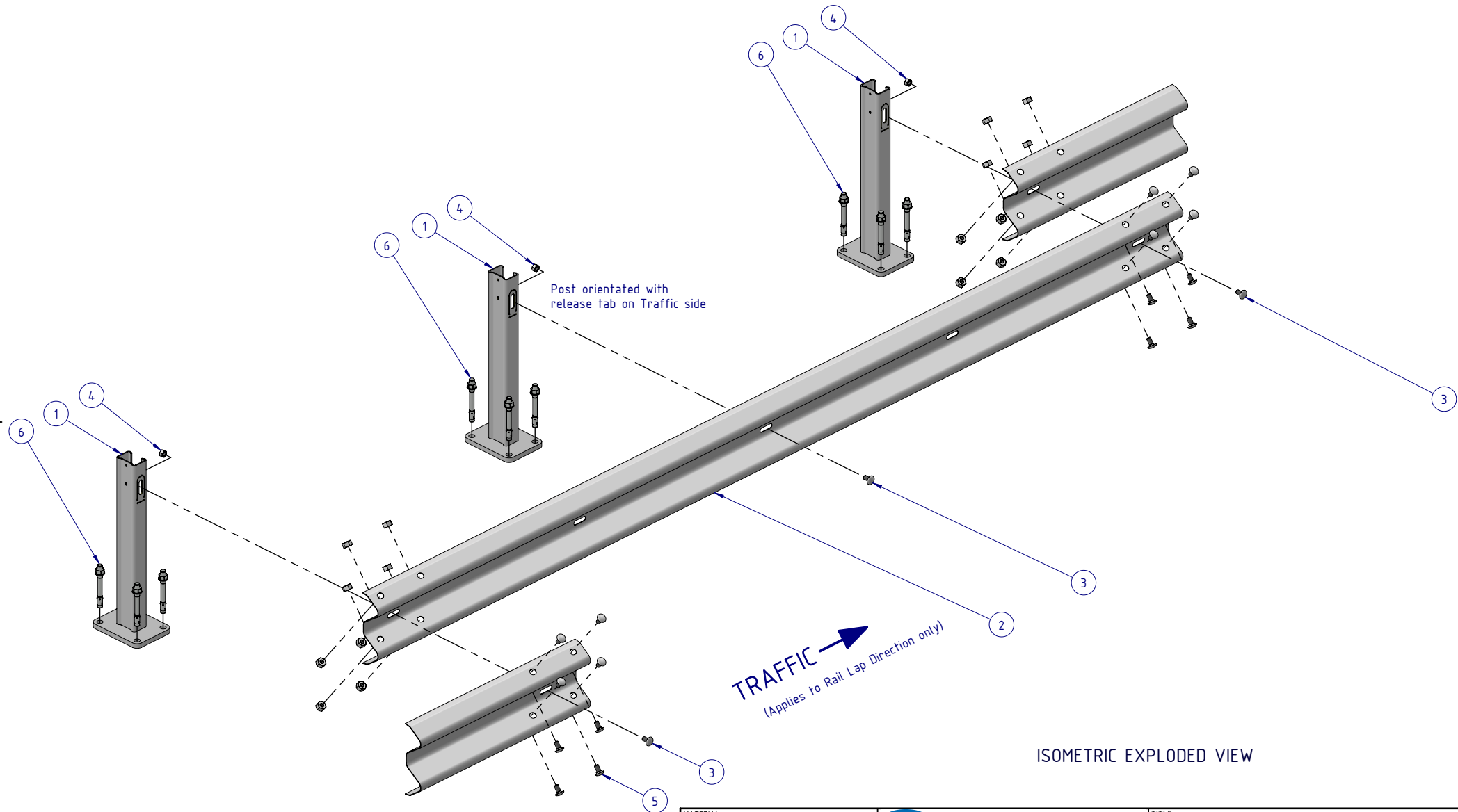
U.N.O. TOLERANCES: ±1mm  
ALL DIMENSIONS ARE IN: mm



THIRD ANGLE PROJECTION

APPROVED

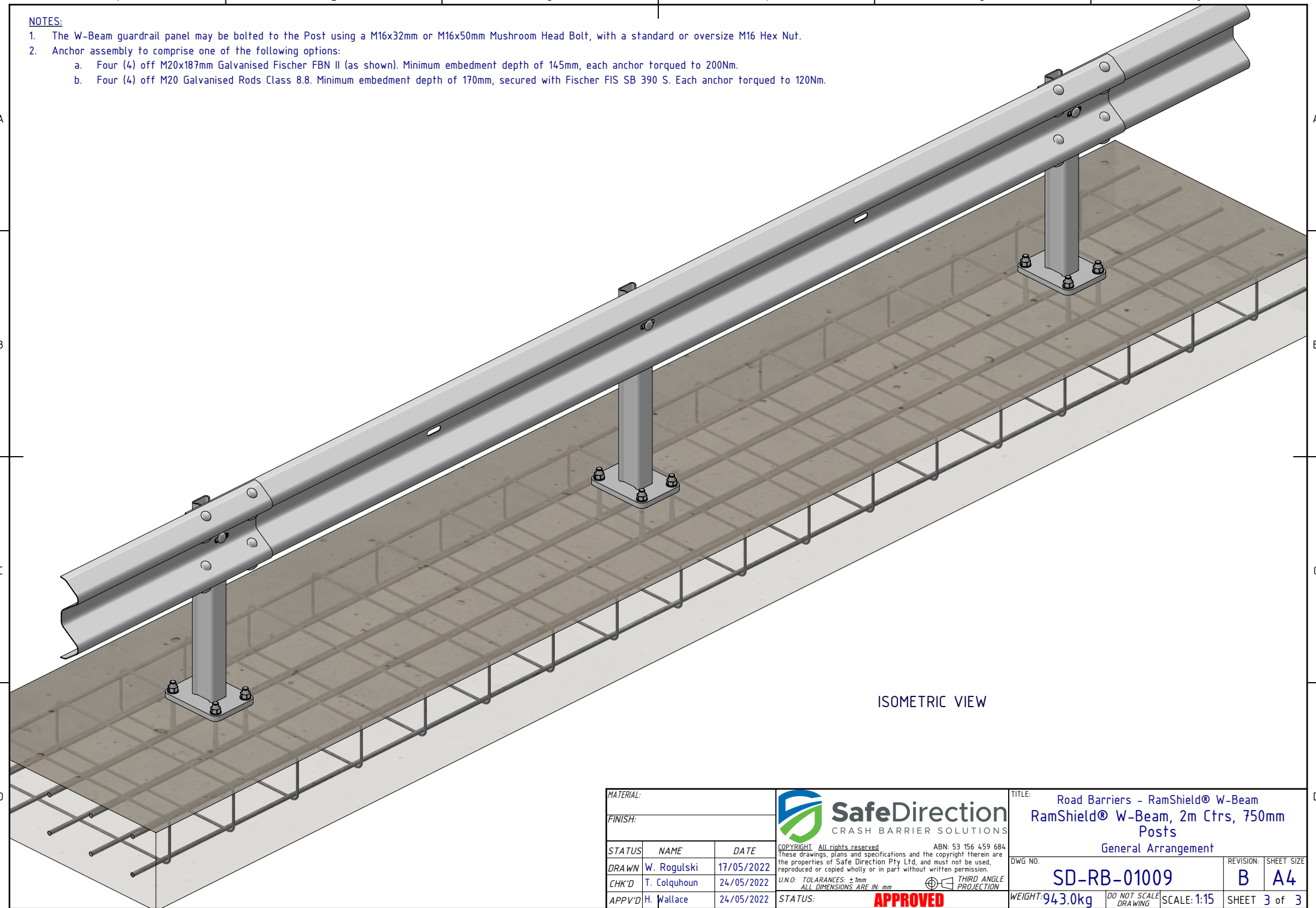
TITLE: Road Barriers - RamShield® W-Beam RamShield® W-Beam, 2m Ctrs, 750mm Posts General Arrangement			
DWG NO.	SD-RB-01009	REVISION:	SHEET SIZE
		B	A4
WEIGHT: 943.0kg	DO NOT SCALE DRAWING	SCALE: 1:25	SHEET 1 of 3

- NOTES:**
1. The W-Beam guardrail panel may be bolted to the Post using a M16x32mm or M16x50mm Mushroom Head Bolt, with a standard or oversize M16 Hex Nut.
  2. Anchor assembly to comprise one of the following options:
    - a. Four (4) off M20x187mm Galvanised Fischer FBN II (as shown). Minimum embedment depth of 145mm, each anchor torqued to 200Nm.
    - b. Four (4) off M20 Galvanised Rods Class 8.8. Minimum embedment depth of 170mm, secured with Fischer FIS SB 390 S. Each anchor torqued to 120Nm.





MATERIAL:			 <div><b>SafeDirection</b> CRASH BARRIER SOLUTIONS</div>	TITLE: Road Barriers - RamShield® W-Beam RamShield® W-Beam, 2m Ctrs, 750mm Posts General Arrangement			
FINISH:				DWG NO. SD-RB-01009			
STATUS	NAME	DATE	<div><small>COPYRIGHT: All rights reserved. ABN: 53 156 459 684 These drawings, plans and specifications and the copyright therein are the properties of Safe Direction Pty Ltd, and must not be used, reproduced or copied wholly or in part without written permission. U.N.O. TOLERANCES: ±1mm ALL DIMENSIONS ARE IN: mm</small></div> <div> <b>THIRD ANGLE PROJECTION</b></div> <div><b>APPROVED</b></div>	REVISION:	SHEET SIZE		
DRAWN	W. Rogulski	17/05/2022		B	A4		
CHK'D	T. Colquhoun	24/05/2022		SCALE: 1:20			
APPV'D	H. Wallace	24/05/2022		SHEET 2 of 3			
STATUS:			WEIGHT: 943.0kg		DO NOT SCALE DRAWING		

- NOTES:**
1. The W-Beam guardrail panel may be bolted to the Post using a M16x32mm or M16x50mm Mushroom Head Bolt, with a standard or oversize M16 Hex Nut.
  2. Anchor assembly to comprise one of the following options:
    - a. Four (4) off M20x187mm Galvanised Fischer FBN II (as shown). Minimum embedment depth of 145mm, each anchor torqued to 200Nm.
    - b. Four (4) off M20 Galvanised Rods Class 8.8. Minimum embedment depth of 170mm, secured with Fischer FIS SB 390 S. Each anchor torqued to 120Nm.



ISOMETRIC VIEW

MATERIAL:			 <b>SafeDirection</b> CRASH BARRIER SOLUTIONS		TITLE: Road Barriers - RamShield® W-Beam RamShield® W-Beam, 2m Ctrs, 750mm Posts General Arrangement			
FINISH:								
STATUS	NAME	DATE	<small>COPYRIGHT: All rights reserved. ABN: 53 156 459 684 These drawings, plans and specifications and the copyright therein are the properties of Safe Direction Pty Ltd, and must not be used, reproduced or copied wholly or in part without written permission. U.N.O: TOLERANCES: ±1mm ALL DIMENSIONS ARE IN: mm</small>  THIRD ANGLE PROJECTION		DWG NO.	REVISION:	SHEET SIZE	
DRAWN	W. Rogulski	17/05/2022			SD-RB-01009		B	A4
CHK'D	T. Colquhoun	24/05/2022						
APPV'D	H. Wallace	24/05/2022						
STATUS:					<b>APPROVED</b>		WEIGHT: 943.0kg	DO NOT SCALE DRAWING