

# Product Data Sheet

## CrocGuard®

Last Updated: September 2023



|                                     |  |
|-------------------------------------|--|
| Containment Level                   | MASH TL4   |
| Impact Condition                    | 10,000 kg rigid truck, 90km/h, 15°   |
| Dynamic Deflection                  | 0.9 m (16 m span)  |
| Containment Level                   | MASH TL3   |
| Impact Condition                    | 2270 kg pick-up truck, 100km/h, 25°  |
| Dynamic Deflection                  | 0.8 m (16 m span)  |
| Maximum Span between Abutment Posts | 16 m   |
| Available Beam Lengths              | 8 m, 10 m, 12 m, 14 m, 16m   |
| Beam Width                          | 280 mm   |
| Beam Mass                           | 280 kg per metre   |
| System Height                       | 1000 mm  |
| Abutment Post Length                | 2150 mm  |
| Abutment Post Dimensions            | 250 x 250 x 9 mm   |
| Abutment Post Mass                  | 150 kg   |
| Compatible Connections              | RamShield® High Containment<br>RamShield® W-Beam<br>MSKT Guardrail End Terminals |

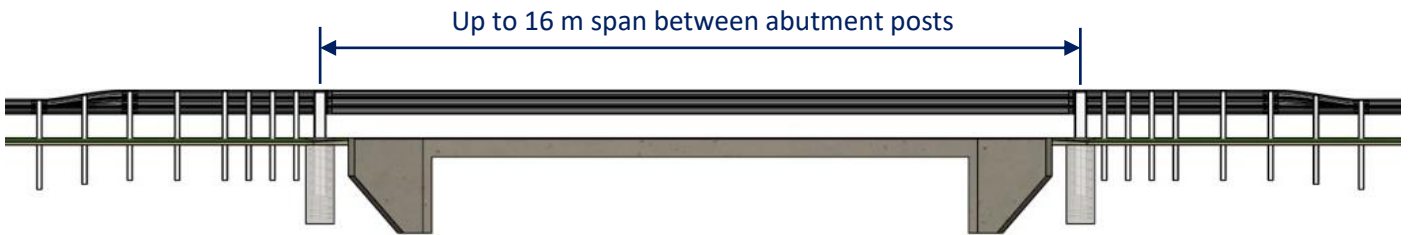


# Product Data Sheet

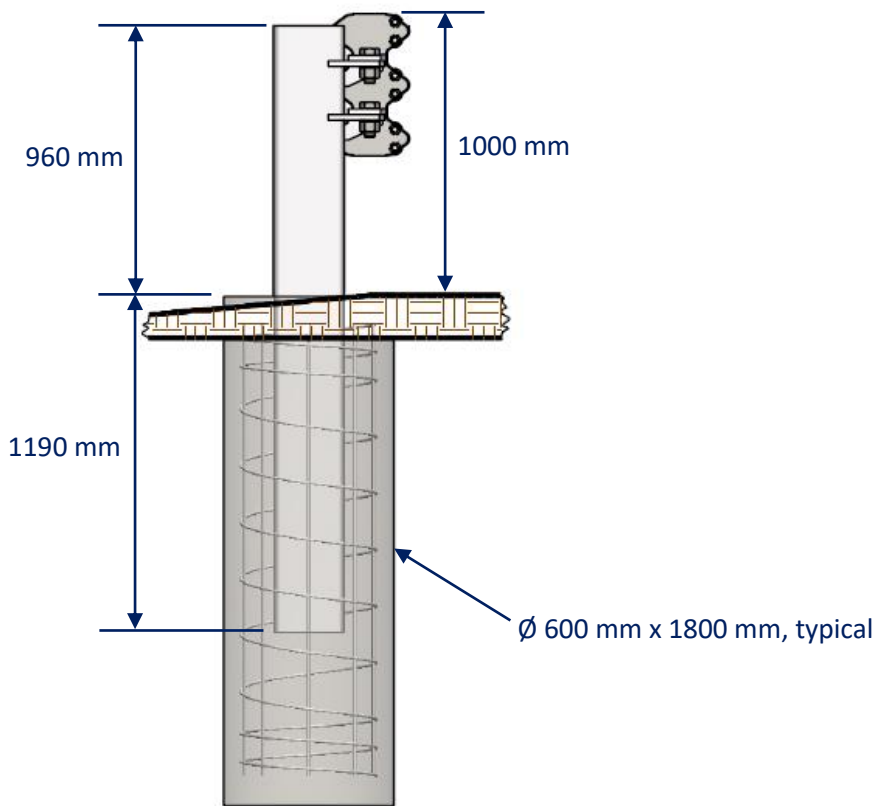
## CrocGuard®



**PLAN VIEW**



**FRONT VIEW**



**ABUTMENT POST  
SIDE ELEVATION**