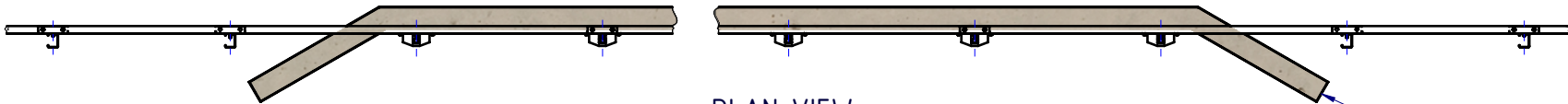
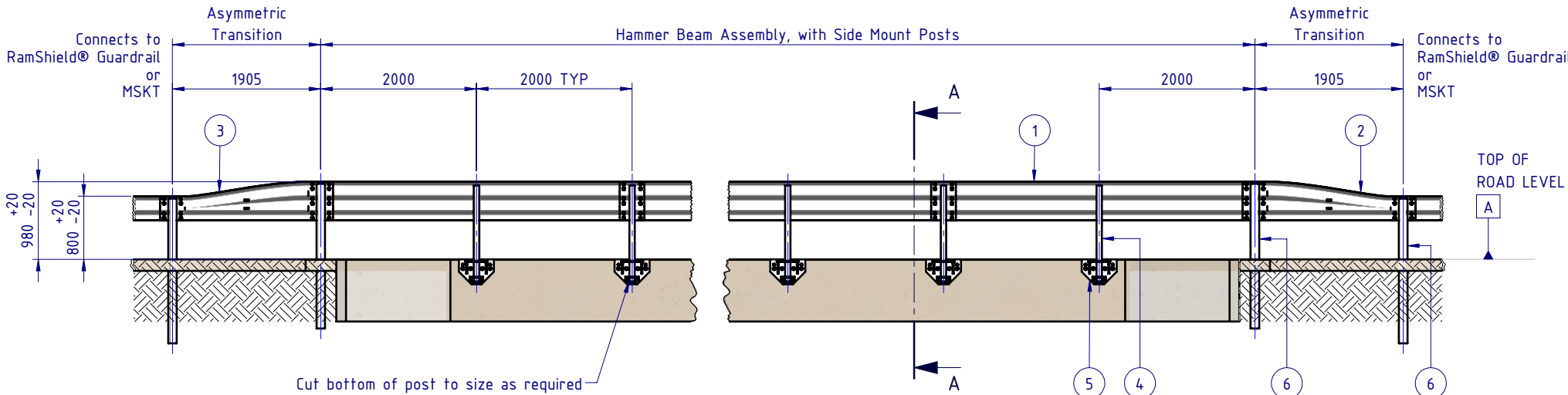


REVISIONS				
REV.	ZONE	DESCRIPTION	DATE	APPV'D
A		Original Issue	12/12/2023	HW
B		Notes & Annotations Revised	12/01/2024	HW
C		Notes & Annotations Revised	22/01/2024	HW



PLAN VIEW

Concrete Culvert  
For reference only.



REAR ELEVATION VIEW

- Notes:
1. Hammer Beam has been evaluated in accordance with MASH Test Level 3 (2270kg pick-up truck travelling at 100km/h and 25 degrees).
  2. Impact assessment has been undertaken with Hammer Beam positioned behind a 200mm high hob.
  3. RamShield posts are sawcut onsite to achieve the specified thriebeam rail height.
  4. Following cutting of RamShield posts to site specific lengths, apply two (2) coats of a zinc rich paint.

BOM			
ITEM NO.	PART NUMBER	DESCRIPTION	Weight kg
1	GR-TB-SR-4000-AG	Thrie-Beam Guardrail; 2.7mm BMT 4.0m NLL, 2.0m CTRS	67.0
2	GE-TB-SR-1905-AG	Assymetric Approach W-Beam to Thrie-Beam Transition	36.5
3	GE-TB-SR-1905-DG	Assymetric Departure Thrie-Beam to W-Beam Transition	36.5
4	GR-PG-SS-1560-AG	RamShield® Standard Post 1560mm	11.8
5	GR-BR-MX-0001-BG	Hammer Beam Side Mounted Bridge Bracket	24.0
6	GR-PG-CS-1860-AG	RamShield® High Containment Post 1860mm	23.9
7	GR-FS-20-0187-HG	FISCHER FBN II, M20x187mm	0.5
8	GR-FS-16-0035-HZ	M16x35 HEX BOLT Gr4.6, HDG (OPTIONAL)	

MATERIAL:			TITLE: Road Barriers - Bridge Barriers Hammer Beam Side-Mount Posts General Arrangement		
FINISH: HOT DIP GALVANISED AS/NZS 4680			DWG NO. SD-RB-03003		
STATUS	NAME	DATE	REVISION: C		
DRAWN	W. Refahi	12/12/2023	SHEET A4		
CHK'D	T. Colquhoun	12/12/2023	SCALE: 1:75		
APPV'D	H. Wallace	12/12/2023	SHEET 1 of 4		
APPROVED			WEIGHT: 19647.95kg		
COPYRIGHT: All rights reserved. ABN: 53 156 459 684 These drawings, plans and specifications and the copyright therein are the properties of Safe Direction Pty Ltd, and must not be used, reproduced or copied wholly or in part without written permission.			DO NOT SCALE DRAWING		
U.N.O. TOLERANCES: ±1mm ALL DIMENSIONS ARE IN: mm			THIRD ANGLE PROJECTION		
STATUS:			Friday, 12 January 2024 10:56:00 AM		

1 2 3 4 5 6

A

B

C

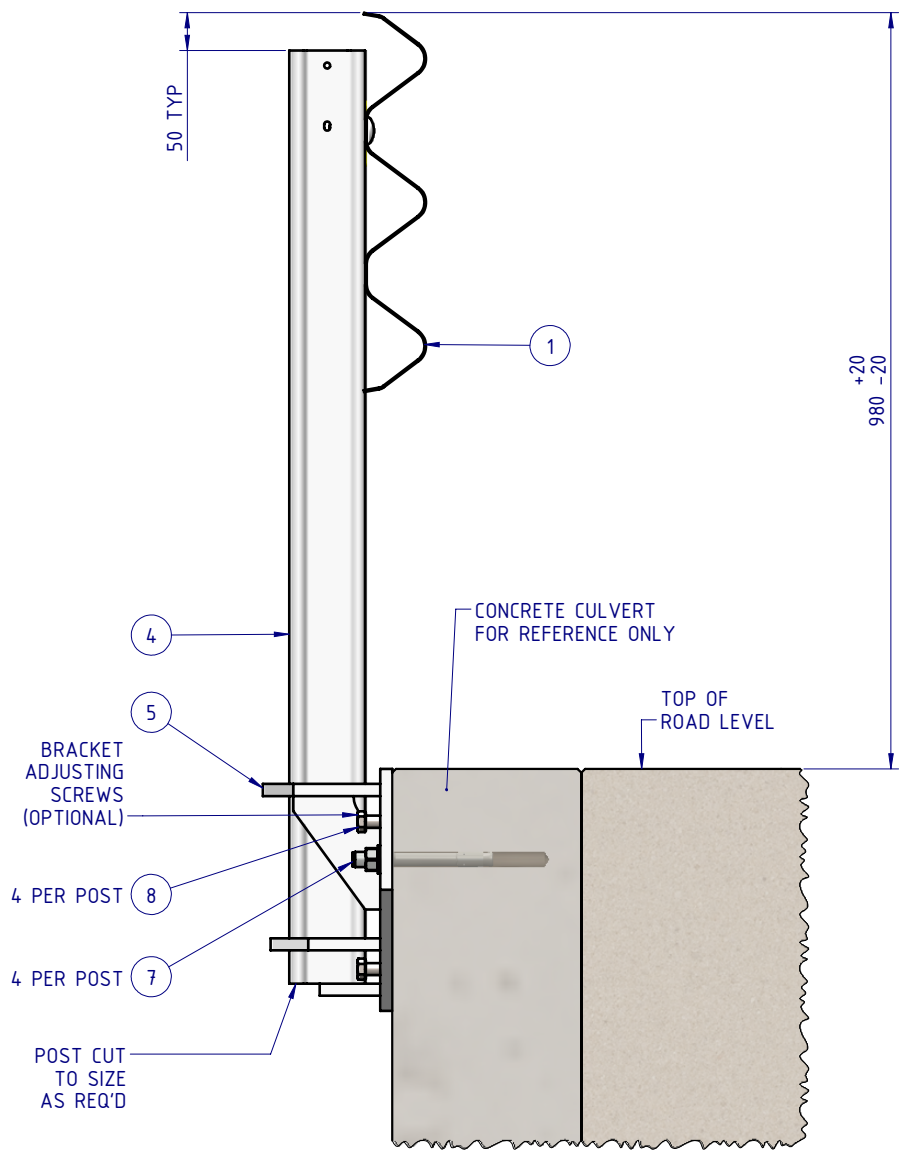
D

A

B

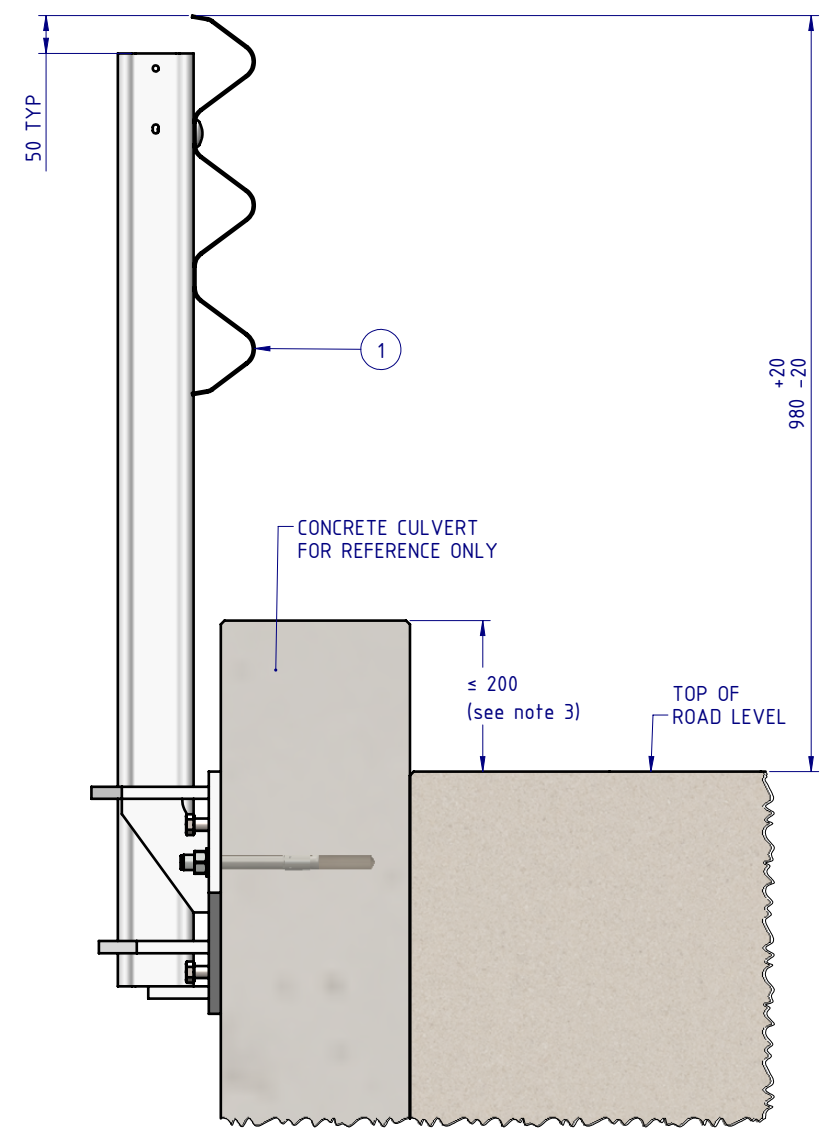
C

D





INSTALLATION WITHOUT HOB

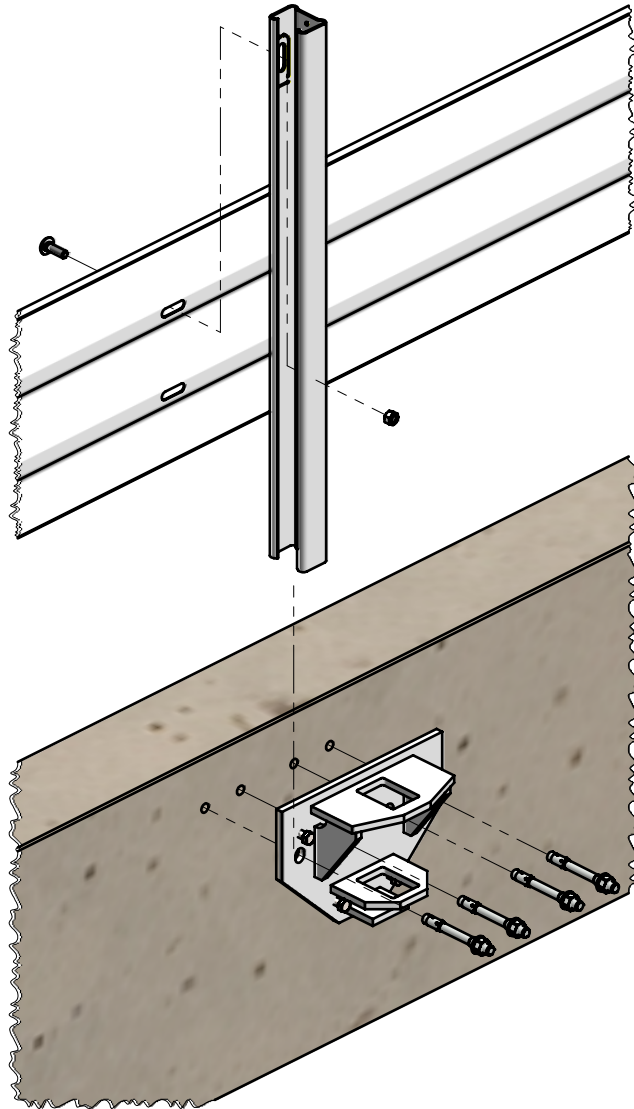
SECTION A-A



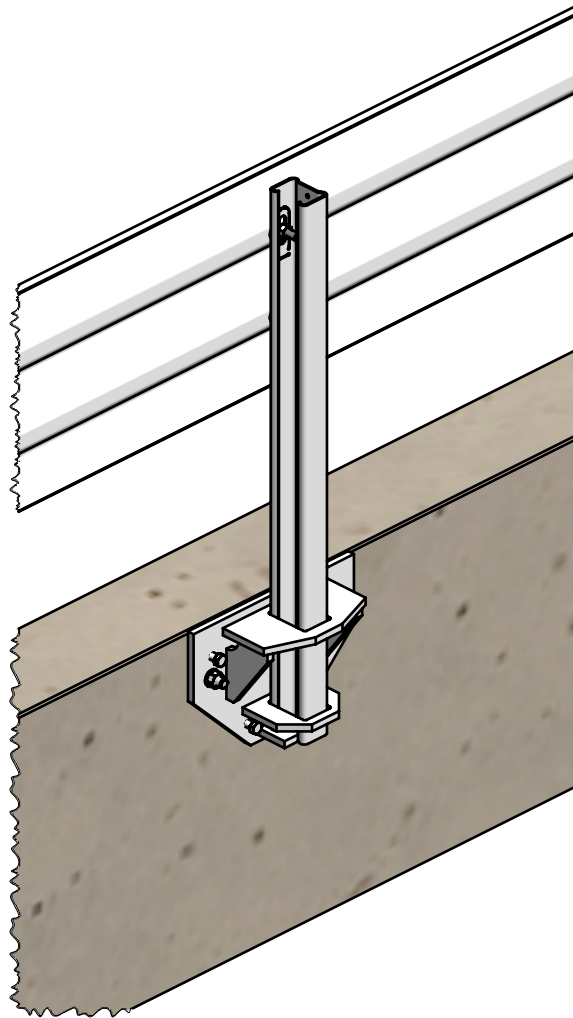
INSTALLATION WITH HOB

MATERIAL:			 <div><b>SafeDirection</b> CRASH BARRIER SOLUTIONS</div>	TITLE: Road Barriers – Bridge Barriers Hammer Beam Side-Mount Posts General Arrangement				
FINISH: HOT DIP GALVANISED AS/NZS 4680				DWG NO. SD-RB-03003				
STATUS	NAME	DATE		<div><small>COPYRIGHT: All rights reserved. ABN: 53 156 459 684 These drawings, plans and specifications and the copyright therein are the properties of Safe Direction Pty Ltd, and must not be used, reproduced or copied wholly or in part without written permission.</small></div> <div><small>U.N.O. TOLERANCES: ±1mm ALL DIMENSIONS ARE IN: mm</small></div> <div>THIRD ANGLE PROJECTION</div>		REVISION: C	SHEET SIZE A4	
DRAWN	W. Refahi	12/12/2023				SHEET 2 of 4		
CHK'D	T. Colquhoun	12/12/2023				SHEET 2 of 4		
APPV'D	H. Wallace	12/12/2023	STATUS: <b>APPROVED</b>			WEIGHT: 19647.95kg	DO NOT SCALE DRAWING	SCALE: 1:10
C:\Users\wesam.refahi\Documents\SDSYD\SD-Assembly\SD-RB-03000 Bridge Barriers\SD-RB-03003 - Hammer Beam, Side Mount Posts.dwg				Friday, 12 January 2024 10:56:00 AM				

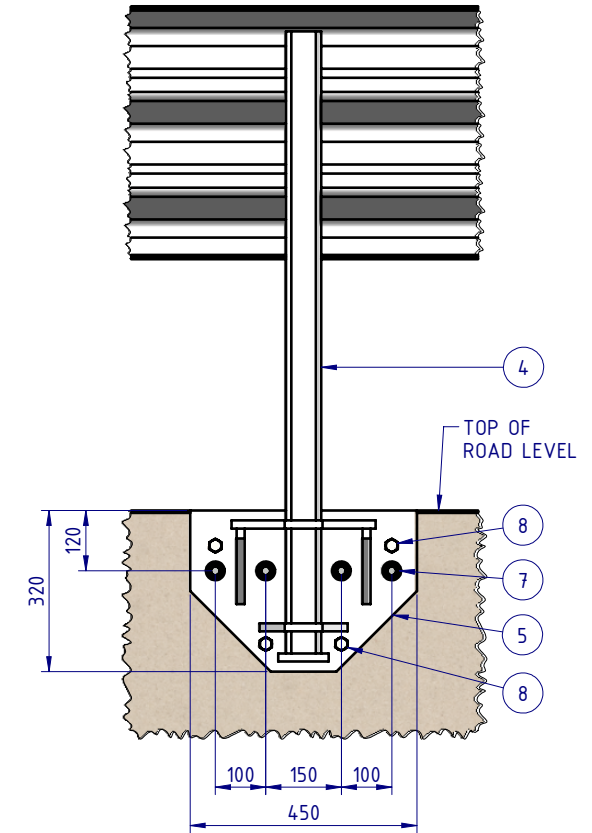
1 2 3 4 5 6



HAMMER BEAM SIDE MOUNTED BRIDGE BRACKET  
EXPLODED VIEW



HAMMER BEAM SIDE MOUNTED BRIDGE BRACKET  
ASSEMBLED VIEW



MATERIAL:		
FINISH: HOT DIP GALVANISED AS/NZS 4680		
STATUS	NAME	DATE
DRAWN	W. Refahi	12/12/2023
CHK'D	T. Colquhoun	12/12/2023
APPV'D	H. Wallace	12/12/2023

**SafeDirection**  
CRASH BARRIER SOLUTIONS

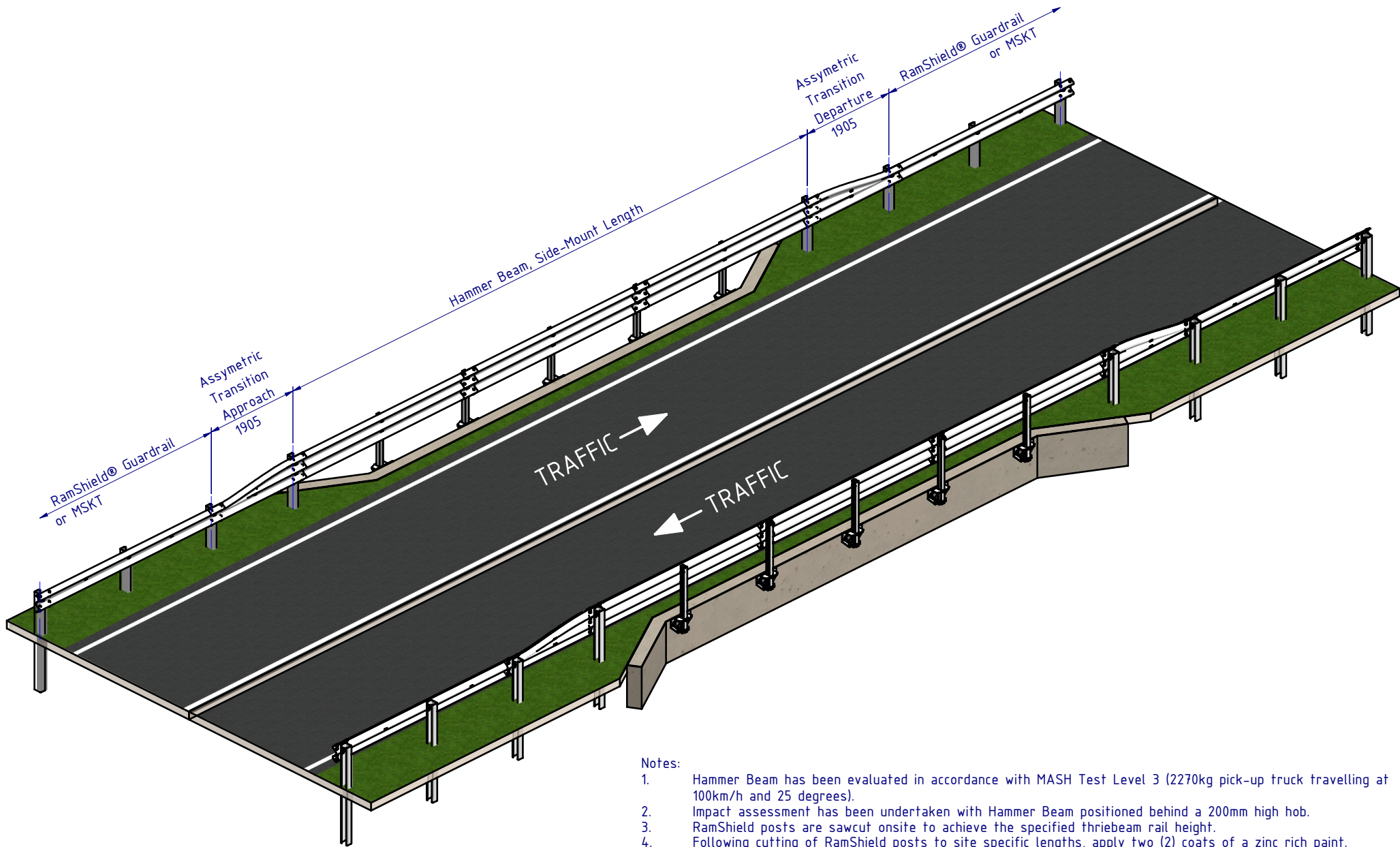
COPYRIGHT: All rights reserved. ABN: 53 156 459 684  
These drawings, plans and specifications and the copyright therein are the properties of Safe Direction Pty Ltd, and must not be used, reproduced or copied wholly or in part without written permission.

U.N.O. TOLERANCES: ±1mm  
ALL DIMENSIONS ARE IN: mm

**THIRD ANGLE PROJECTION**


**APPROVED**

TITLE: Road Barriers - Bridge Barriers Hammer Beam Side-Mount Posts General Arrangement			
DWG NO.	SD-RB-03003	REVISION:	SHEET SIZE
WEIGHT: 19647.95kg	DO NOT SCALE DRAWING	SCALE: 1:15	SHEET 3 of 4



Notes:

1. Hammer Beam has been evaluated in accordance with MASH Test Level 3 (2270kg pick-up truck travelling at 100km/h and 25 degrees).
2. Impact assessment has been undertaken with Hammer Beam positioned behind a 200mm high hob.
3. RamShield posts are sawcut onsite to achieve the specified thriebeam rail height.
4. Following cutting of RamShield posts to site specific lengths, apply two (2) coats of a zinc rich paint.

MATERIAL:			 <div>SafeDirection CRASH BARRIER SOLUTIONS</div>	TITLE: Road Barriers - Bridge Barriers Hammer Beam Side-Mount Posts General Arrangement			
FINISH: HOT DIP GALVANISED AS/NZS 4680				DWG NO. SD-RB-03003			
STATUS	NAME	DATE	<div>COPYRIGHT: All rights reserved. ABN: 53 156 459 684 These drawings, plans and specifications and the copyright therein are the properties of Safe Direction Pty Ltd, and must not be used, reproduced or copied wholly or in part without written permission.</div> <div>U.N.O. TOLERANCES: ±1mm ALL DIMENSIONS ARE IN: mm</div> <div>THIRD ANGLE PROJECTION</div> <div>APPROVED</div>		REVISION:	SHEET SIZE	
DRAWN	W. Refahi	12/12/2023			C	A4	
CHK'D	T. Colquhoun	12/12/2023			SCALE: 1:85		
APPV'D	H. Wallace	12/12/2023			SHEET 4 of 4		