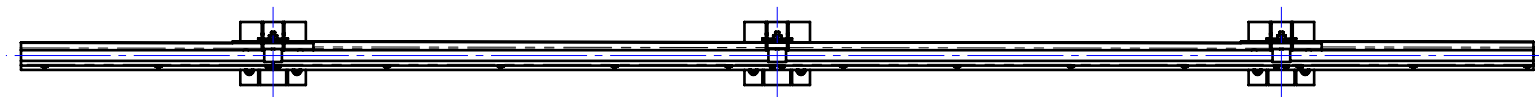


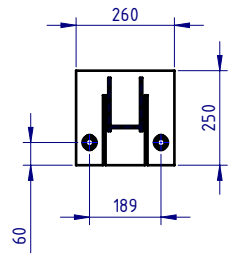
Crash Test Performance				
Vehicle Type	Impact Speed	Impact Height	Impact Energy	Barrier Configuration
2000 kg	16 km/h	0.5 m	20.5 kJ	6 m w-beam supported by four (4) posts at 2.0 m centres positioned on the outside edge of a 150 mm thick elevated concrete slab.
2000 kg	23 km/h	0.5 m	39.7 kJ	4 m w-beam supported by five (5) posts at 1.0 m centres positioned on the outside edge of a 150 mm thick elevated concrete slab.

REVISIONS				
REV.	ZONE	DESCRIPTION	DATE	APPV'D
A		Original Issue	31/03/2022	HW
B		Performance & Installation Req. tables added	23/02/2026	HW

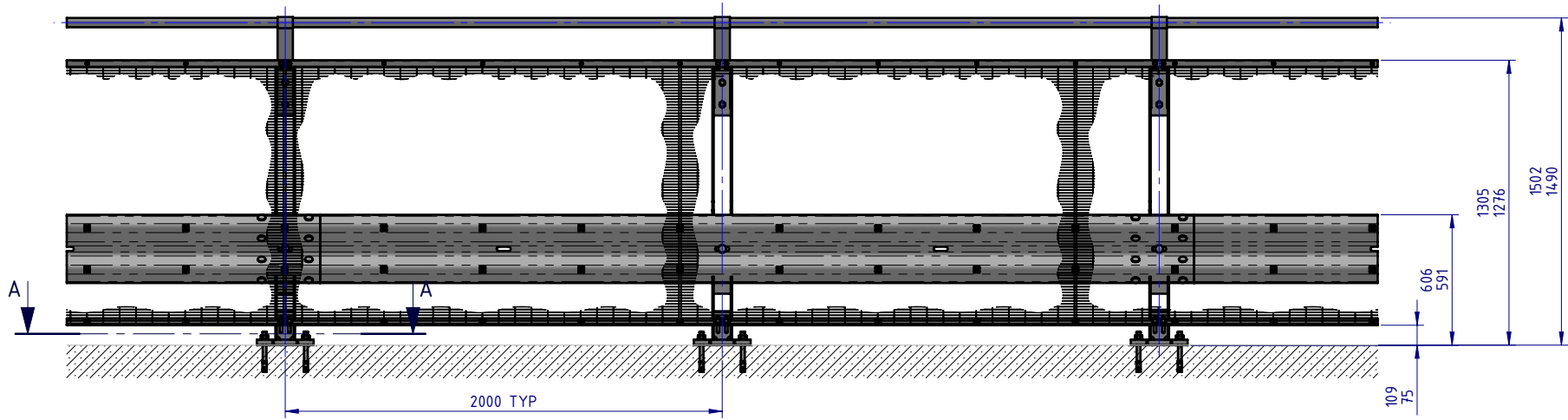
Installation Requirements				
Anchor Type	Drill Depth	Torque	Anchors per Post	Minimum Concrete Slab Thickness (t)
M20 Fischer FBN II	115 mm	200 Nm	2 off	150 mm



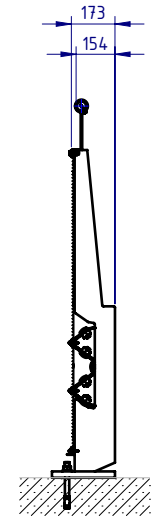
PLAN VIEW




SECTION A-A
Base Plate Detail
SCALE 1:20



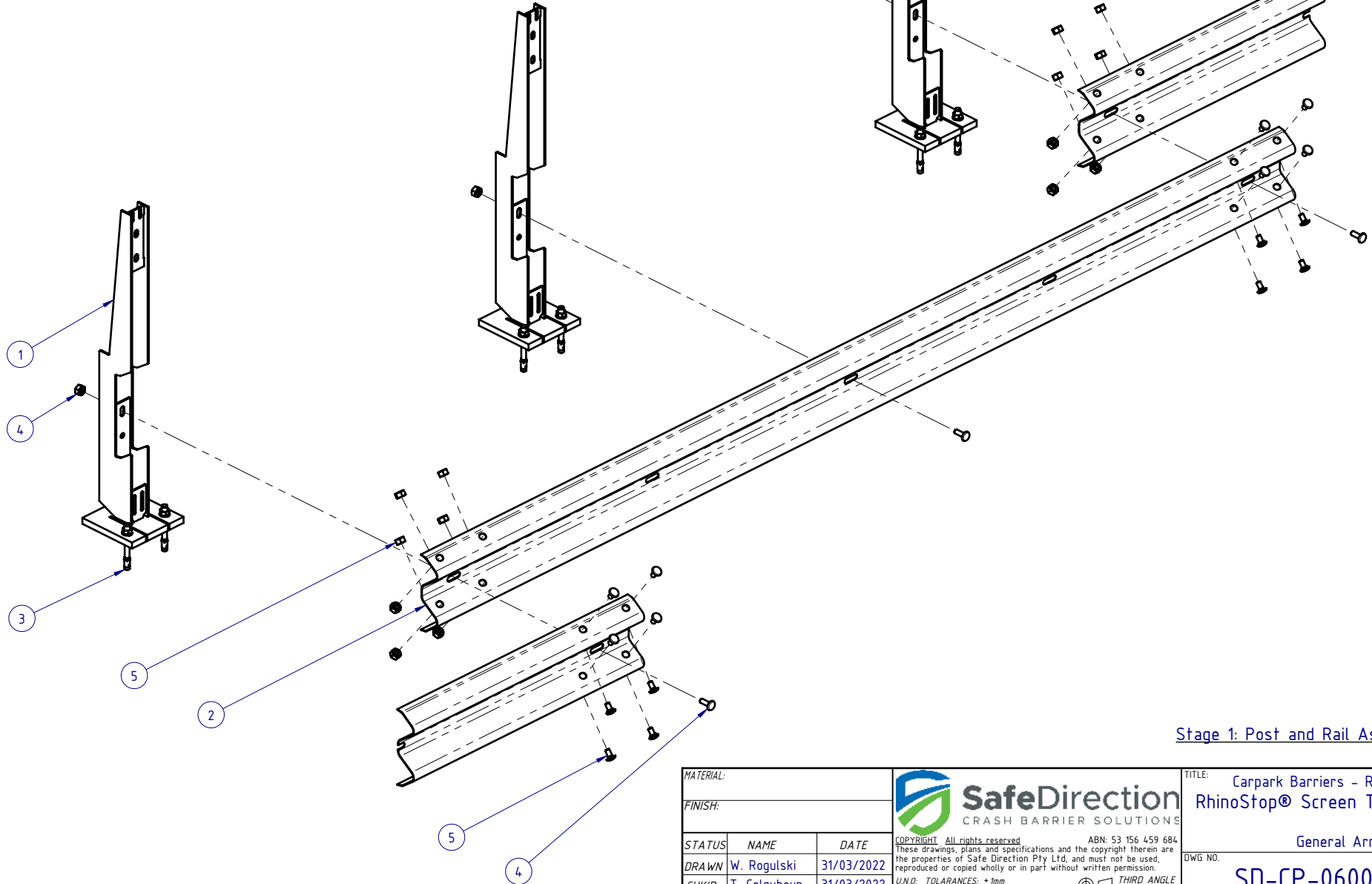
FRONT ELEVATION





SIDE ELEVATION

MATERIAL:			 SafeDirection CRASH BARRIER SOLUTIONS	TITLE: Carpark Barriers - Rhino-Stop® Screen RhinoStop® Screen Type 2, 1500mm High		
FINISH:				General Arrangement		
STATUS	NAME	DATE	COPYRIGHT: All rights reserved. ABN: 53 156 459 684 These drawings, plans and specifications and the copyright therein are the properties of Safe Direction Pty Ltd, and must not be used, reproduced or copied wholly or in part without written permission.			
DRAWN	W. Rogulski	31/03/2022	DWG NO. SD-CP-06002			
CHK'D	T. Colquhoun	31/03/2022	REVISION: B SHEET SIZE A4			
APPV'D	H. Wallace	31/03/2022	SCALE: 1:30 SHEET 1 of 8			
U.N.O: TOLERANCES: ±1mm ALL DIMENSIONS ARE IN: mm			THIRD ANGLE PROJECTION			
STATUS: APPROVED			WEIGHT: 199.2kg			

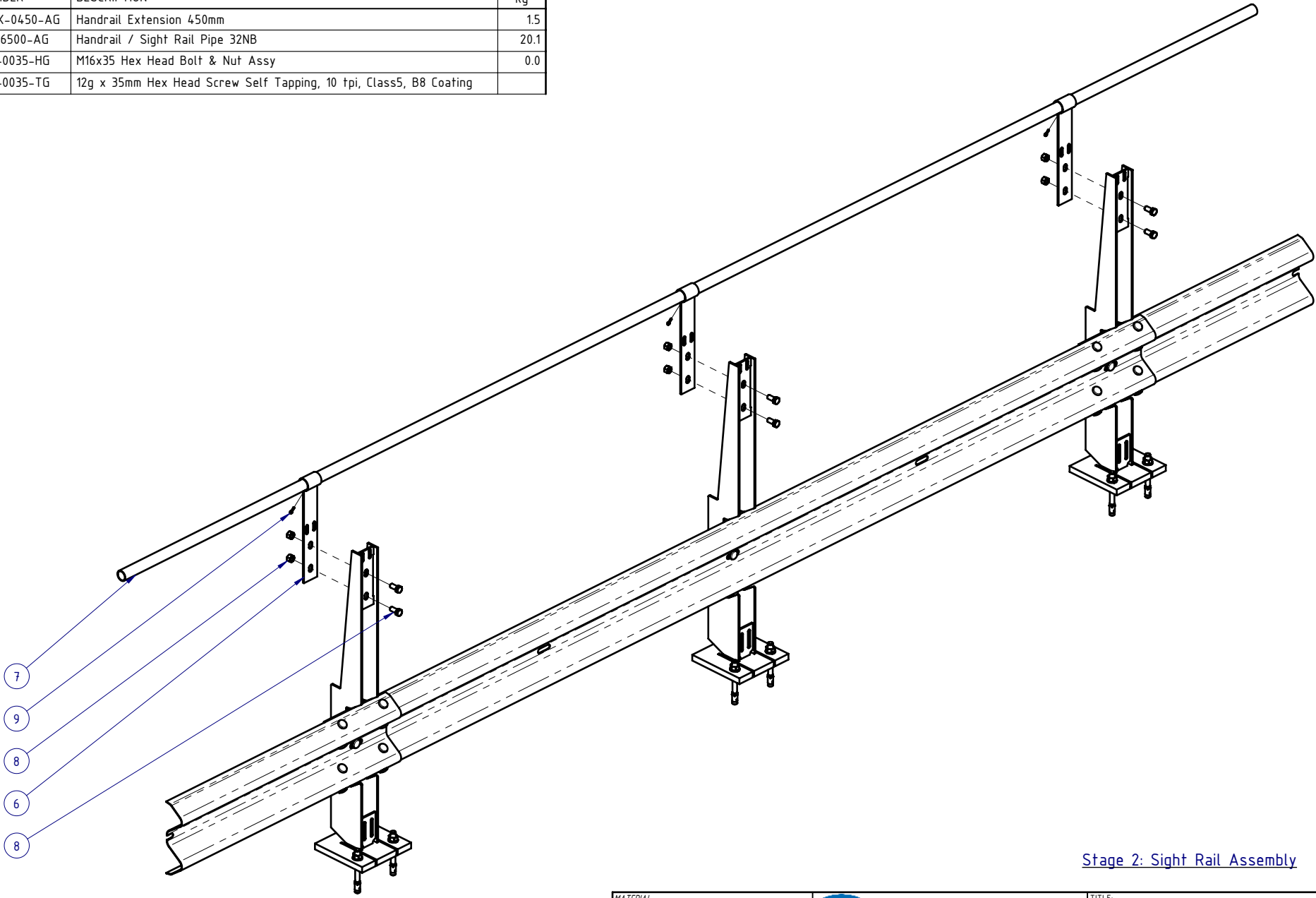
BOM			
ITEM NO.	PART NUMBER	DESCRIPTION	Weight kg
1	GR-PB-IS-1300-AG	Rhino-Stop® Screen Post 1300mm high	25.6
2	GR-WB-SR-4000-CG	W-Beam Guardrail 4.0M NLL, 1.0M CTRS	43.3
3	GR-FS-20-0187-HG	FISCHER FBN II, M20x187mm	0.5
4	GR-FS-16-0050-MG	M16x50 Mushroom Head POST Bolt & Oversize Nut Assy Class 4.6	0.2
5	GR-FS-16-0032-MG	M16x32 Mushroom Head SPLICE Bolt & Oversize Nut Assy CL8.8	0.2




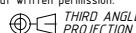
Stage 1: Post and Rail Assembly

MATERIAL:			 SafeDirection CRASH BARRIER SOLUTIONS		TITLE: Carpark Barriers - Rhino-Stop® Screen RhinoStop® Screen Type 2, 1500mm High		
FINISH:					General Arrangement		
STATUS	NAME	DATE	<small>COPYRIGHT All rights reserved ABN: 53 156 459 684</small> <small>These drawings, plans and specifications and the copyright therein are the properties of Safe Direction Pty Ltd, and must not be used, reproduced or copied wholly or in part without written permission.</small>		DWG NO.	REVISION:	SHEET SIZE
DRAWN	W. Rogulski	31/03/2022	<small>U.N.O. TOLERANCES: ±1mm</small> <small>ALL DIMENSIONS ARE IN: mm</small>		 THIRD ANGLE PROJECTION	SD-CP-06002	B A4
CHK'D	T. Colquhoun	31/03/2022	STATUS: APPROVED				
APPV'D	H. Wallace	31/03/2022			SHEET 2 of 8		

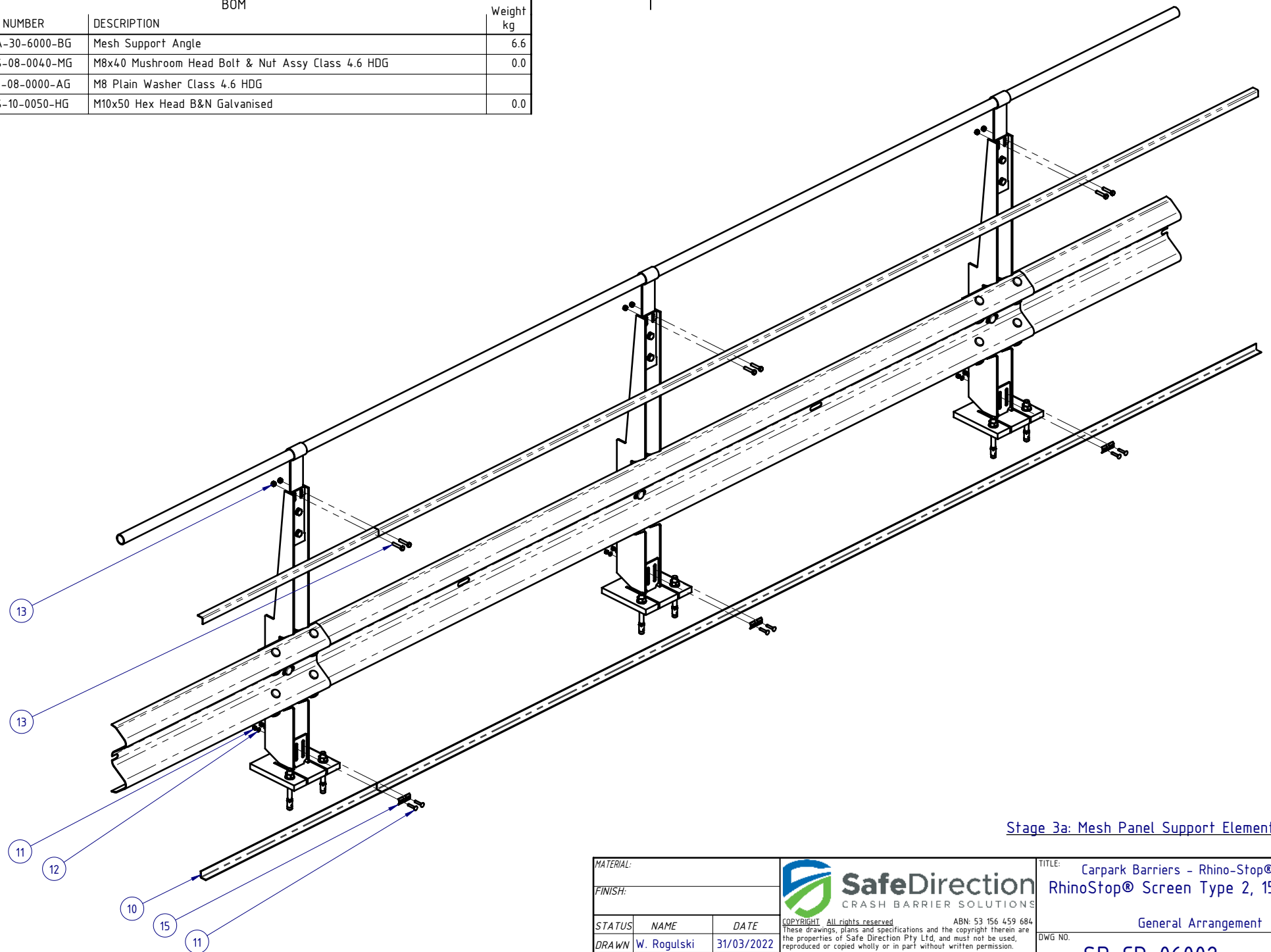
BOM			Weight
ITEM NO.	PART NUMBER	DESCRIPTION	kg
6	GR-MX-MX-0450-AG	Handrail Extension 450mm	1.5
7	HR-PI-32-6500-AG	Handrail / Sight Rail Pipe 32NB	20.1
8	GR-FS-16-0035-HG	M16x35 Hex Head Bolt & Nut Assy	0.0
9	GR-FS-12-0035-TG	12g x 35mm Hex Head Screw Self Tapping, 10 tpi, Class5, B8 Coating	




Stage 2: Sight Rail Assembly

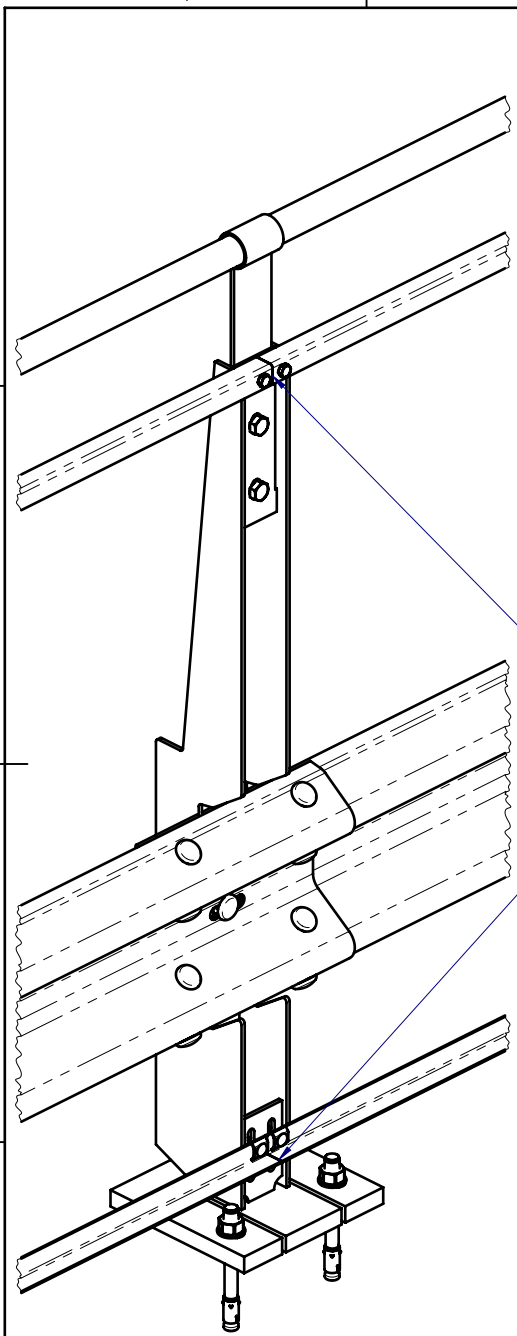
MATERIAL:			 SafeDirection CRASH BARRIER SOLUTIONS		TITLE: Carpark Barriers - Rhino-Stop® Screen RhinoStop® Screen Type 2, 1500mm High			
FINISH:					General Arrangement			
STATUS	NAME	DATE	<small>COPYRIGHT All rights reserved. ABN: 53 156 459 684 These drawings, plans and specifications and the copyright therein are the properties of Safe Direction Pty Ltd, and must not be used, reproduced or copied wholly or in part without written permission. U.N.O. TOLERANCES: ±1mm ALL DIMENSIONS ARE IN: mm</small>			DWG NO.	REVISION:	SHEET SIZE
DRAWN	W. Rogulski	31/03/2022				SD-CP-06002	B	A4
CHK'D	T. Colquhoun	31/03/2022						
APPV'D	H. Wallace	31/03/2022						
STATUS: APPROVED			<small>C:\Users\Wesam.Refa\Documents\SDSYD\SD\Assembly\SD-CP Carpark Barriers\SD-CP-06000_RhinoStop Screen\SD-CP-06002 - RhinoStop Screen Type 2, 1500mm High\ Monday, 23 February 2026 12:36:03 PM</small>					

BOM			
ITEM NO.	PART NUMBER	DESCRIPTION	Weight kg
10	GR-EA-30-6000-BG	Mesh Support Angle	6.6
11	GR-FS-08-0040-MG	M8x40 Mushroom Head Bolt & Nut Assy Class 4.6 HDG	0.0
12	GE-FS-08-0000-AG	M8 Plain Washer Class 4.6 HDG	
13	GR-FS-10-0050-HG	M10x50 Hex Head B&N Galvanised	0.0

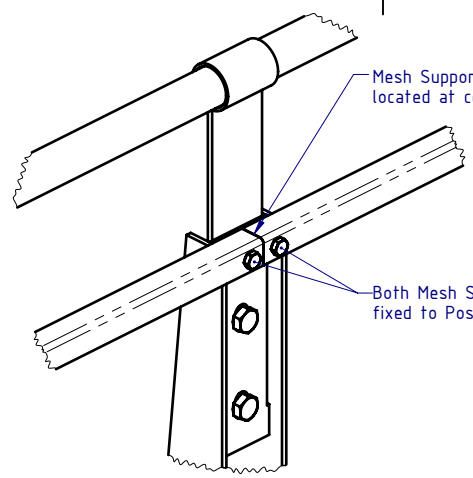


Stage 3a: Mesh Panel Support Elements Assembly

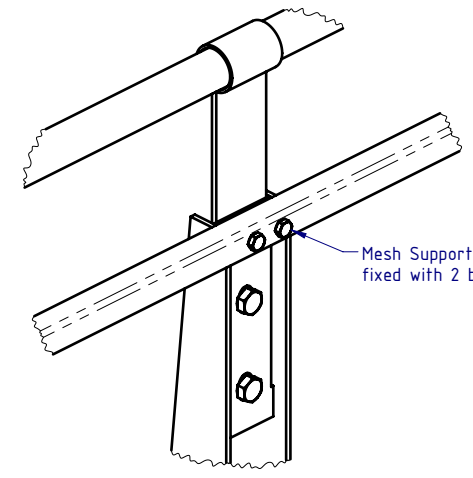
MATERIAL:			 SafeDirection CRASH BARRIER SOLUTIONS		TITLE: Carpark Barriers - Rhino-Stop® Screen RhinoStop® Screen Type 2, 1500mm High			
FINISH:					General Arrangement			
STATUS	NAME	DATE	<small>COPYRIGHT All rights reserved ABN: 53 156 459 684</small> <small>These drawings, plans and specifications and the copyright therein are the properties of Safe Direction Pty Ltd, and must not be used, reproduced or copied wholly or in part without written permission.</small> <small>U.N.O. TOLERANCES: ±1mm ALL DIMENSIONS ARE IN: mm</small>			DWG NO.	REVISION:	SHEET SIZE
DRAWN	W. Rogulski	31/03/2022				SD-CP-06002	B	A4
CHK'D	T. Colquhoun	31/03/2022				<small>THIRD ANGLE PROJECTION</small>		
APPV'D	H. Wallace	31/03/2022						
STATUS: APPROVED			<small>C:\Users\Wesam.Rehman\Documents\SDSYD\SD\Assembly\SD-CP Carpark Barriers\SD-CP-06000_RhinoStop Screen\SD-CP-06002 - RhinoStop Screen Type 2, 1500mm High\ Monday, 23 February 2026 12:36:03 PM</small>					



DETAIL B
SCALE 1:10

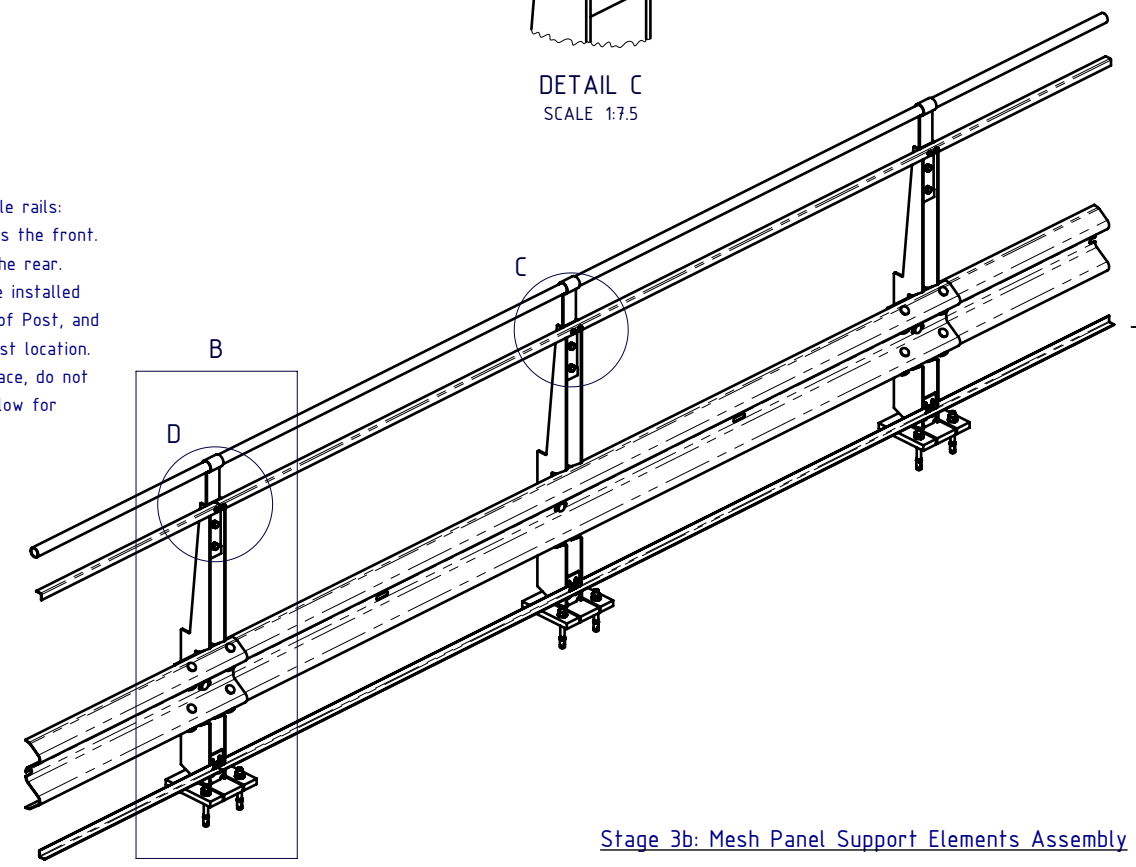


DETAIL D
SCALE 1:7.5




DETAIL C
SCALE 1:7.5

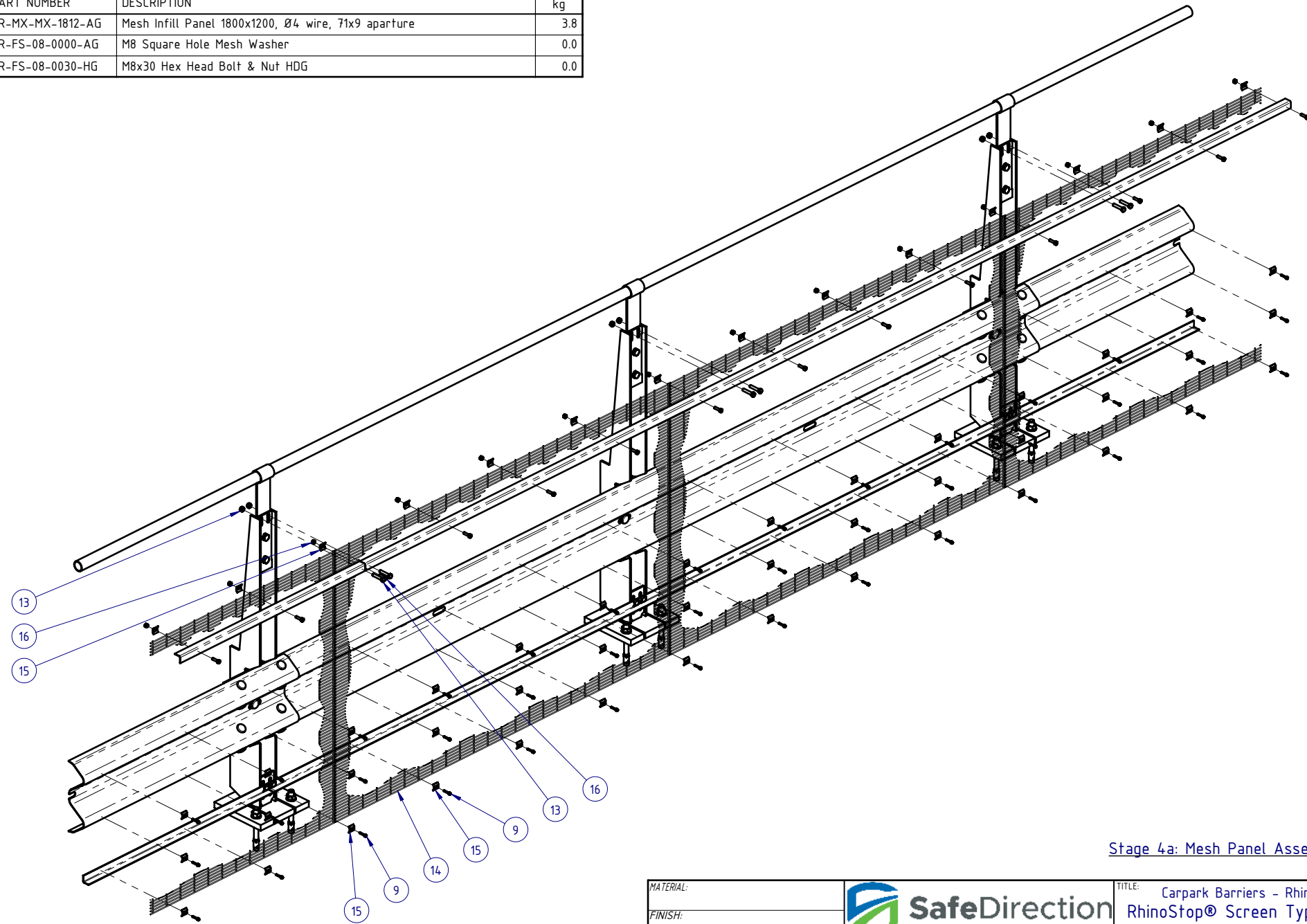
1. Note orientation of Mesh Support Angle rails:
 - a. Bottom Angle rail toe-out towards the front.
 - b. Top Angle rail toe-out towards the rear.
2. All Mesh Support Angle Rails MUST be installed with the butt-joint located at centre of Post, and fixed to Post with 4 bolts at each Post location.
3. Top rail to be loosely positioned in place, do not tighten fasteners at this stage, to allow for Mesh Panel to be placed behind it.




Stage 3b: Mesh Panel Support Elements Assembly

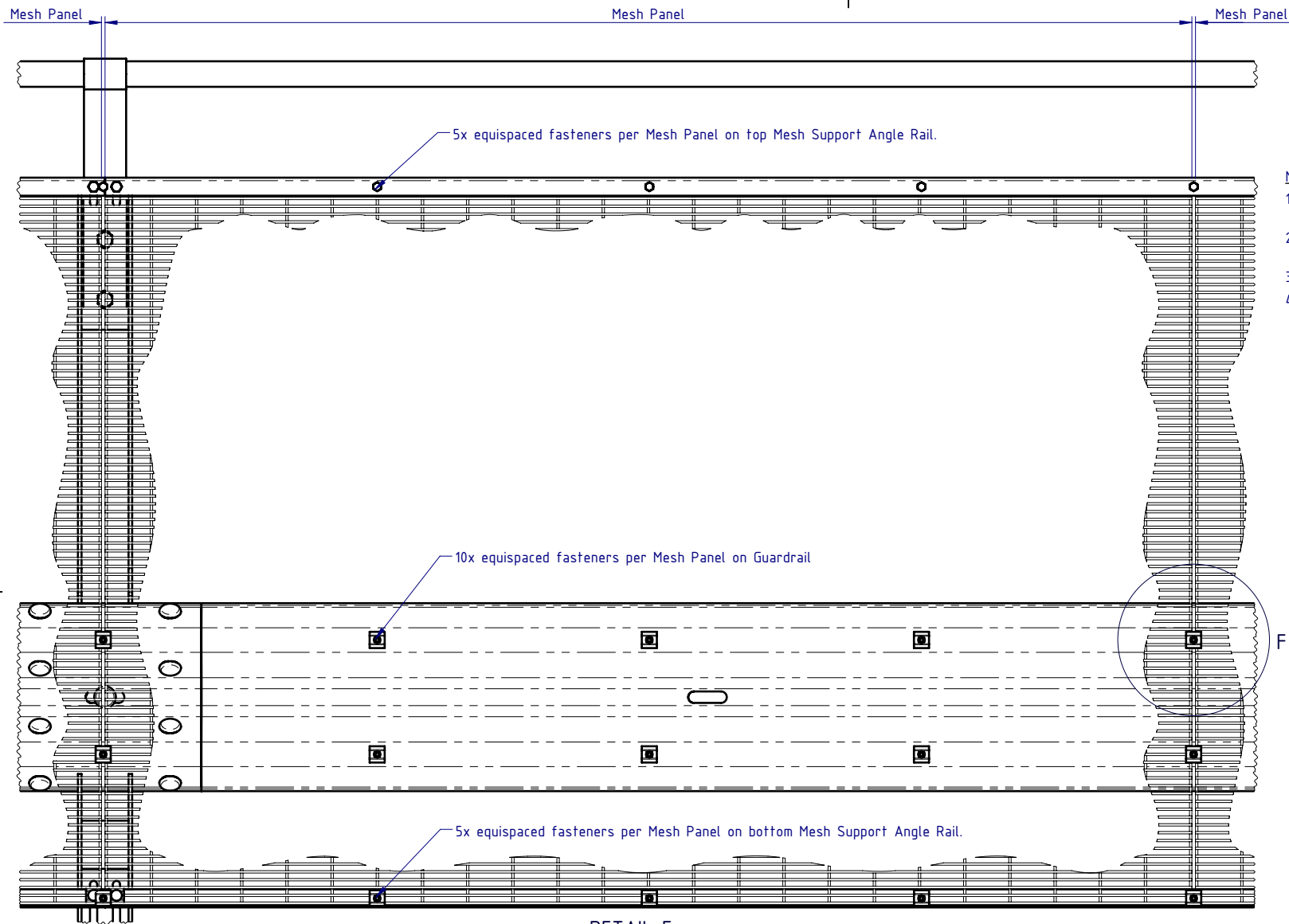
MATERIAL:			 SafeDirection CRASH BARRIER SOLUTIONS		TITLE: Carpark Barriers - Rhino-Stop® Screen RhinoStop® Screen Type 2, 1500mm High			
FINISH:					General Arrangement			
STATUS	NAME	DATE	<small>COPYRIGHT: All rights reserved. ABN: 53 156 459 684</small> <small>These drawings, plans and specifications and the copyright therein are the properties of Safe Direction Pty Ltd, and must not be used, reproduced or copied wholly or in part without written permission.</small> <small>U.N.O: TOLERANCES: ±1mm</small> <small>ALL DIMENSIONS ARE IN: mm</small>			DWG NO.	REVISION:	SHEET SIZE
DRAWN	W. Rogulski	31/03/2022				SD-CP-06002	B	A4
CHK'D	T. Colquhoun	31/03/2022				<small>DO NOT SCALE DRAWING</small> SCALE: 1:30 SHEET 5 of 8		
APPV'D	H. Wallace	31/03/2022						
STATUS: APPROVED			<small>C:\Users\Wesam.Rehman\Documents\SDSYD\SD\Assembly\SD-CP Carpark Barriers\SD-CP-06000_RhinoStop Screen\SD-CP-06002 - RhinoStop Screen Type 2, 1500mm High\ Monday, 23 February 2022 12:36:03 PM</small>					

BOM			
ITEM NO.	PART NUMBER	DESCRIPTION	Weight kg
14	GR-MX-MX-1812-AG	Mesh Infill Panel 1800x1200, Ø4 wire, 71x9 aparture	3.8
15	GR-FS-08-0000-AG	M8 Square Hole Mesh Washer	0.0
16	GR-FS-08-0030-HG	M8x30 Hex Head Bolt & Nut HDG	0.0



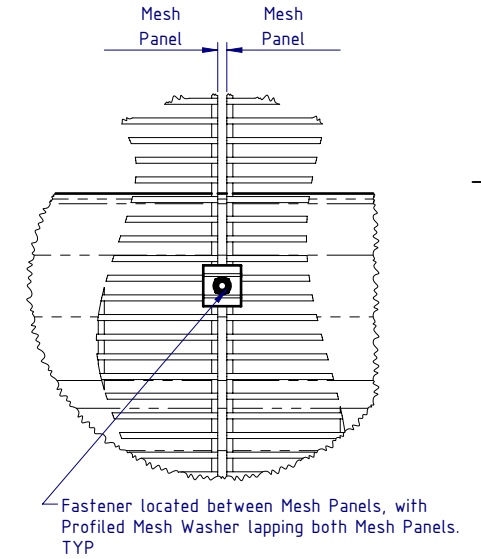
Stage 4a: Mesh Panel Assembly

MATERIAL:			 <p>SafeDirection CRASH BARRIER SOLUTIONS</p>	TITLE: Carpark Barriers - Rhino-Stop® Screen RhinoStop® Screen Type 2, 1500mm High				
FINISH:				General Arrangement				
STATUS	NAME	DATE	<small>COPYRIGHT All rights reserved ABN: 53 156 459 684</small> <small>These drawings, plans and specifications and the copyright therein are the properties of Safe Direction Pty Ltd, and must not be used, reproduced or copied wholly or in part without written permission.</small>			DWG NO.	REVISION:	SHEET SIZE
DRAWN	W. Rogulski	31/03/2022	<small>U.N.O. TOLERANCES: ±1mm</small> <small>ALL DIMENSIONS ARE IN: mm</small>			SD-CP-06002	B	A4
CHK'D	T. Colquhoun	31/03/2022	<small>THIRD ANGLE PROJECTION</small>			WEIGHT: 199.2kg	DO NOT SCALE DRAWING	SCALE: 1:20
APPV'D	H. Wallace	31/03/2022	APPROVED			SHEET 6 of 8		



Mesh Panel Assembly Notes:

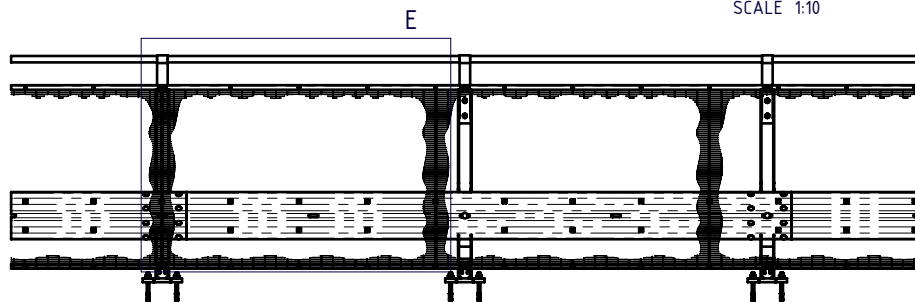
1. Position first Mesh Panel in Landscape orientation, resting on bottom Mesh Support Angle Rail.
2. Position adjacent Mesh Panels with a 5-10mm gap to allow for fixing screw between each Panel.
3. Fix Mesh Panels as indicated in Detail E and Detail F views.
4. Each Mesh Panel to be fixed with 20x Self Tapping Screws and Profiled Mesh Washers.




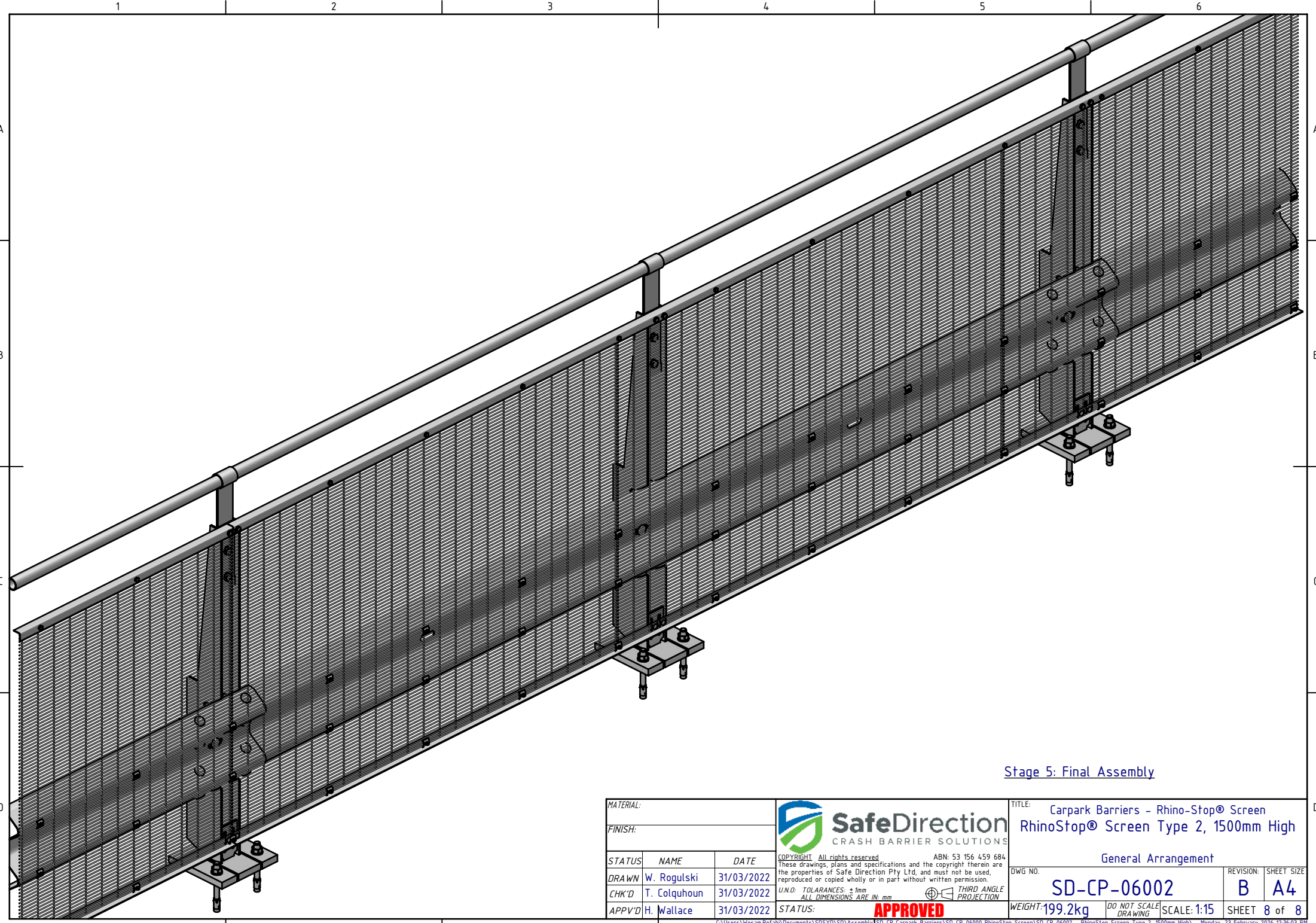
DETAIL E
SCALE 1:10

DETAIL F
SCALE 1:5


Stage 4b: Mesh Panel Assembly



MATERIAL:			 <p>SafeDirection CRASH BARRIER SOLUTIONS</p> <p><small>COPYRIGHT: All rights reserved. ABN: 53 156 459 684 These drawings, plans and specifications and the copyright therein are the properties of Safe Direction Pty Ltd, and must not be used, reproduced or copied wholly or in part without written permission.</small></p>		TITLE: Carpark Barriers - Rhino-Stop® Screen RhinoStop® Screen Type 2, 1500mm High		
FINISH:					General Arrangement		
STATUS	NAME	DATE	DWG NO.	REVISION:	SHEET SIZE		
DRAWN	W. Rogulski	31/03/2022	SD-CP-06002	B	A4		
CHK'D	T. Colquhoun	31/03/2022		WEIGHT: 199.2kg		DO NOT SCALE DRAWING	
APPV'D	H. Wallace	31/03/2022		SCALE: 1:50	SHEET 7 of 8		
U.N.O. TOLERANCES: ±1mm ALL DIMENSIONS ARE IN: mm			THIRD ANGLE PROJECTION		STATUS: APPROVED		



Stage 5: Final Assembly

MATERIAL:			 <p>SafeDirection CRASH BARRIER SOLUTIONS</p>	TITLE: Carpark Barriers - Rhino-Stop® Screen RhinoStop® Screen Type 2, 1500mm High	
FINISH:				General Arrangement	
STATUS	NAME	DATE	<small>COPYRIGHT: All rights reserved. ABN: 53 156 459 684 These drawings, plans and specifications and the copyright therein are the properties of Safe Direction Pty Ltd, and must not be used, reproduced or copied wholly or in part without written permission.</small>		DWG NO.
DRAWN	W. Rogulski	31/03/2022	<small>U.N.O. TOLERANCES: ±1mm ALL DIMENSIONS ARE IN: mm</small>		REVISION: B
CHK'D	T. Colquhoun	31/03/2022	<small>THIRD ANGLE PROJECTION</small>		SHEET SIZE: A4
APPV'D	H. Wallace	31/03/2022	STATUS: APPROVED	WEIGHT: 199.2kg	SCALE: 1:15
			<small>DO NOT SCALE DRAWING</small>		SHEET 8 of 8