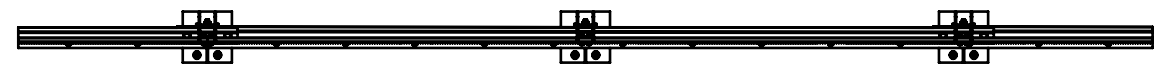


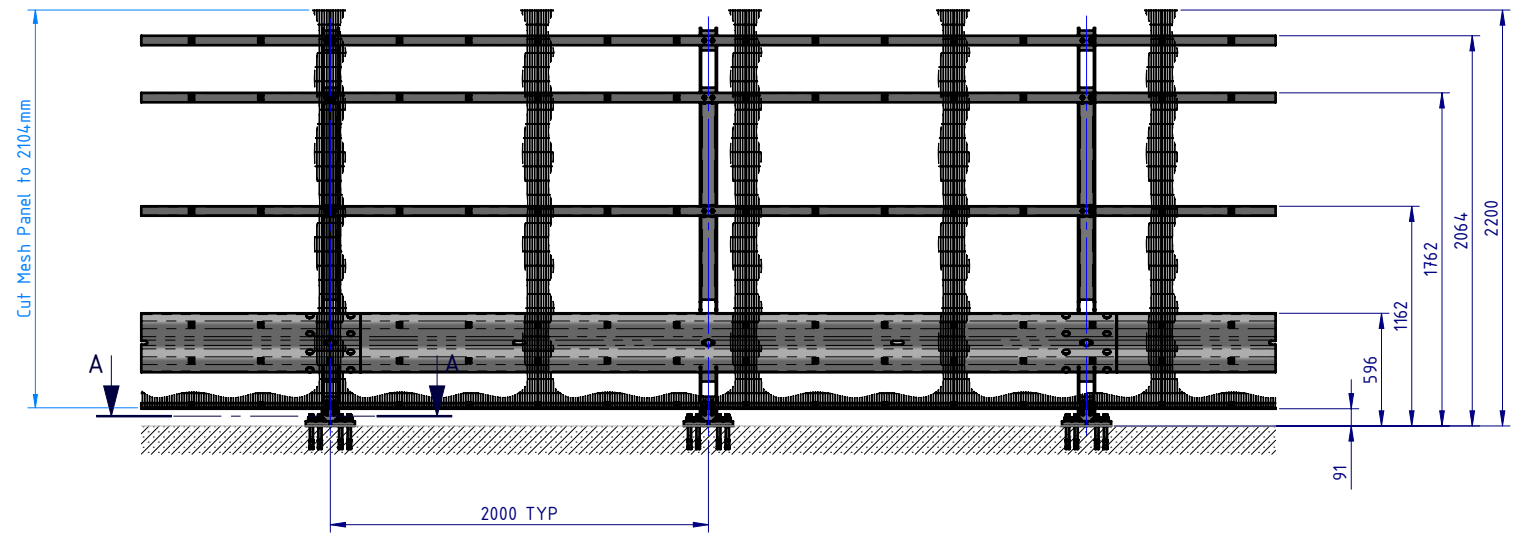
Crash Test Performance				
Vehicle Type	Impact Speed	Impact Height	Impact Energy	Barrier Configuration
2000 kg	16 km/h	0.5 m	20.5 kJ	6 m w-beam supported by four (4) posts at 2.0 m centres positioned on the outside edge of a 150 mm thick elevated concrete slab.
2000 kg	23 km/h	0.5 m	39.7 kJ	4 m w-beam supported by five (5) posts at 1.0 m centres positioned on the outside edge of a 150 mm thick elevated concrete slab.

REVISIONS				
REV.	ZONE	DESCRIPTION	DATE	APPV'D
A		Original Issue	15/03/2022	HW
B		Performance & Installation Req. tables added	23/02/2026	HW

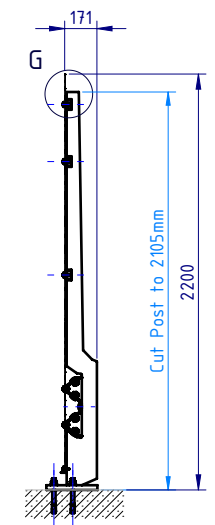
Installation Requirements				
Anchor Type	Drill Depth	Torque	Anchors per Post	Minimum Concrete Slab Thickness (t)
M20 Fischer FBN II	115 mm	200 Nm	4 off	150 mm



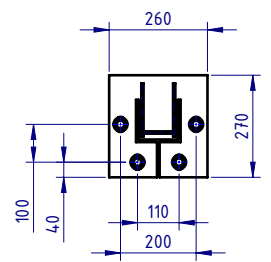
PLAN VIEW



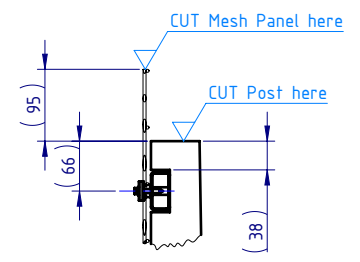
FRONT ELEVATION



SIDE ELEVATION



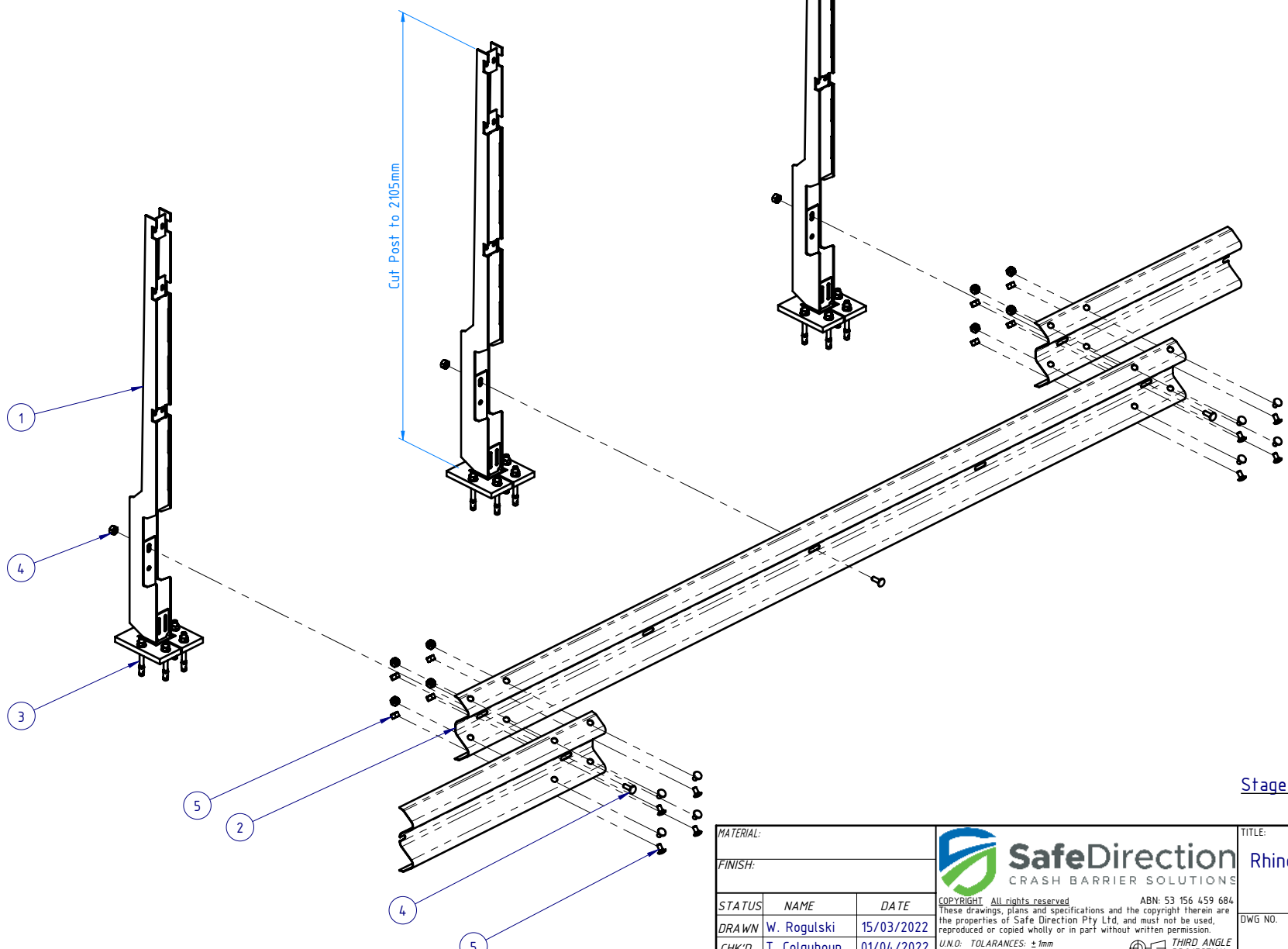
SECTION A-A
Base Plate Detail
SCALE 1:20




DETAIL G
Cutting Detail
SCALE 1:10

MATERIAL:		SafeDirection CRASH BARRIER SOLUTIONS		TITLE: Carpark Barriers - Rhino-Stop® Screen	
FINISH:				RhinoStop® Screen Type 4, 2200mm High	
STATUS		<small>COPYRIGHT All rights reserved. ABN: 53 156 459 684 These drawings, plans and specifications and the copyright therein are the properties of Safe Direction Pty Ltd, and must not be used, reproduced or copied wholly or in part without written permission.</small>		General Arrangement	
DRAWN	W. Rogulski	15/03/2022	DWG NO. SD-CP-06004		REVISION: B
CHK'D	T. Colquhoun	01/04/2022	<small>U.N.O. TOLERANCES: ±1mm ALL DIMENSIONS ARE IN: mm</small>		SHEET SIZE: A4
APPV'D	H. Wallace	01/04/2022	<small>THIRD ANGLE PROJECTION</small>		
<small>STATUS:</small> APPROVED			WEIGHT: 240.9kg	DO NOT SCALE DRAWING	SCALE: 1:40 SHEET 1 of 7

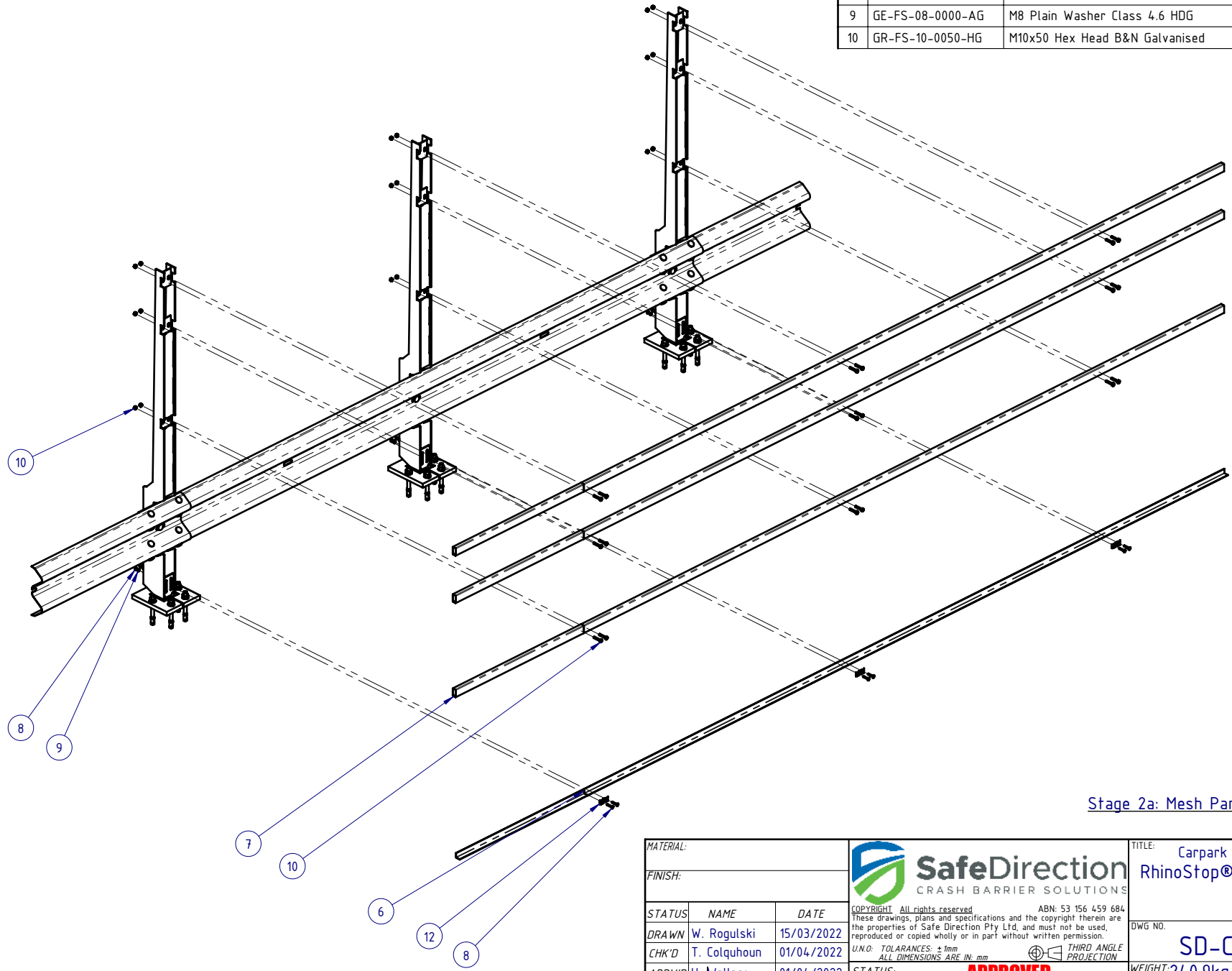
BOM			
ITEM NO.	PART NUMBER	DESCRIPTION	Weight kg
1	GR-PB-IS-2360-AG	Rhino-Stop® Screen Post 2360mm high	35.2
2	GR-WB-SR-4000-CG	W-Beam Guardrail 4.0M NLL, 1.0M CTRS	43.3
3	GR-FS-20-0187-HG	FISCHER FBN II, M20x187mm	0.5
4	GR-FS-16-0050-MG	M16x50 Mushroom Head POST Bolt & Oversize Nut Assy Class 4.6	0.2
5	GR-FS-16-0032-MG	M16x32 Mushroom Head SPLICE Bolt & Oversize Nut Assy CL8.8	0.2




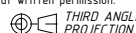
Stage 1: Post and Rail Assembly

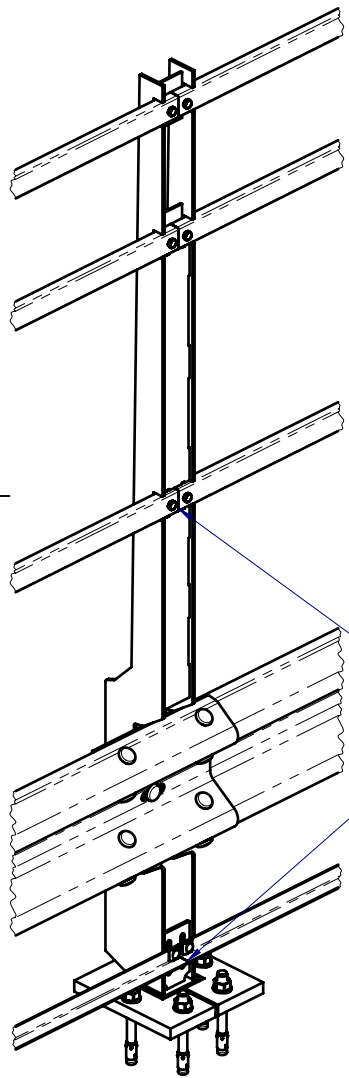
MATERIAL:			 SafeDirection CRASH BARRIER SOLUTIONS		TITLE: Carpark Barriers - Rhino-Stop® Screen RhinoStop® Screen Type 4, 2200mm High		
FINISH:					General Arrangement		
STATUS	NAME	DATE	COPYRIGHT: All rights reserved. ABN: 53 156 459 684 These drawings, plans and specifications and the copyright therein are the properties of Safe Direction Pty Ltd, and must not be used, reproduced or copied wholly or in part without written permission.		DWG NO.	REVISION:	SHEET SIZE
DRAWN	W. Rogulski	15/03/2022	U.N.O. TOLERANCES: ±1mm ALL DIMENSIONS ARE IN: mm		SD-CP-06004	B	A4
CHK'D	T. Colquhoun	01/04/2022	THIRD ANGLE PROJECTION		WEIGHT: 240.9kg	DO NOT SCALE DRAWING	SCALE: 1:25
APPV'D	H. Wallace	01/04/2022	STATUS: APPROVED		SHEET 2 of 7		

BOM			Weight kg
ITEM NO.	PART NUMBER	DESCRIPTION	
6	GR-EA-30-6000-BG	Mesh Support Angle	6.6
7	GR-RH-SR-5025-AG	RHS 50x25x2.0mm, 8000mm Long Galvanised AS1163-C350	17.2
8	GR-FS-08-0040-MG	M8x40 Mushroom Head Bolt & Nut Assy Class 4.6 HDG	0.0
9	GE-FS-08-0000-AG	M8 Plain Washer Class 4.6 HDG	
10	GR-FS-10-0050-HG	M10x50 Hex Head B&N Galvanised	0.0



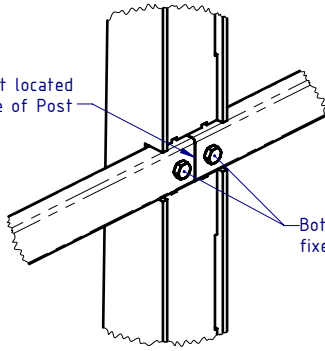
Stage 2a: Mesh Panel Support Elements Assembly

MATERIAL:			 SafeDirection CRASH BARRIER SOLUTIONS		TITLE: Carpark Barriers - Rhino-Stop® Screen RhinoStop® Screen Type 4, 2200mm High		
FINISH:					General Arrangement		
STATUS	NAME	DATE	COPYRIGHT: All rights reserved. ABN: 53 156 459 684 These drawings, plans and specifications and the copyright therein are the properties of Safe Direction Pty Ltd, and must not be used, reproduced or copied wholly or in part without written permission.		DWG NO.	REVISION:	SHEET SIZE
DRAWN	W. Rogulski	15/03/2022	U.N.O. TOLERANCES: ±1mm ALL DIMENSIONS ARE IN: mm		 THIRD ANGLE PROJECTION	SD-CP-06004	B A4
CHK'D	T. Colquhoun	01/04/2022					
APPV'D	H. Wallace	01/04/2022					
STATUS: APPROVED			WEIGHT: 240.9kg	DO NOT SCALE DRAWING	SCALE: 1:30	SHEET 3 of 7	



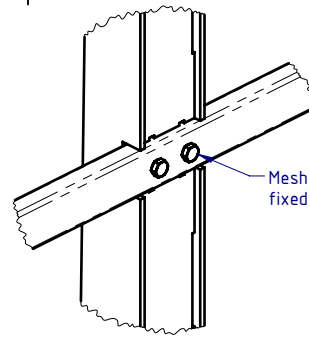
DETAIL B
SCALE 1:15

RHS butt-joint located at centre of Post



DETAIL D
SCALE 1:7.5

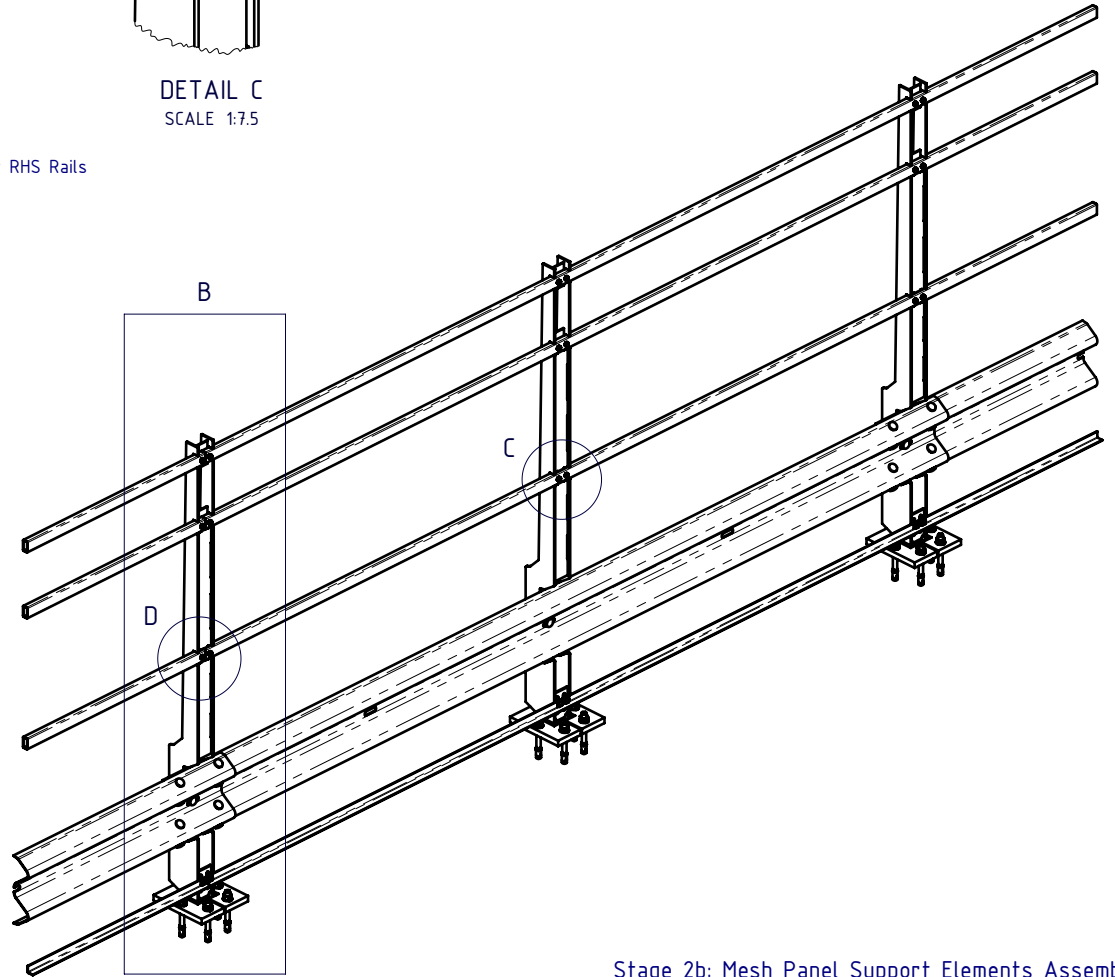
Both Mesh Support RHS Rails fixed to Post




DETAIL C
SCALE 1:7.5

Mesh Support RHS Rail fixed with 2 bolts.

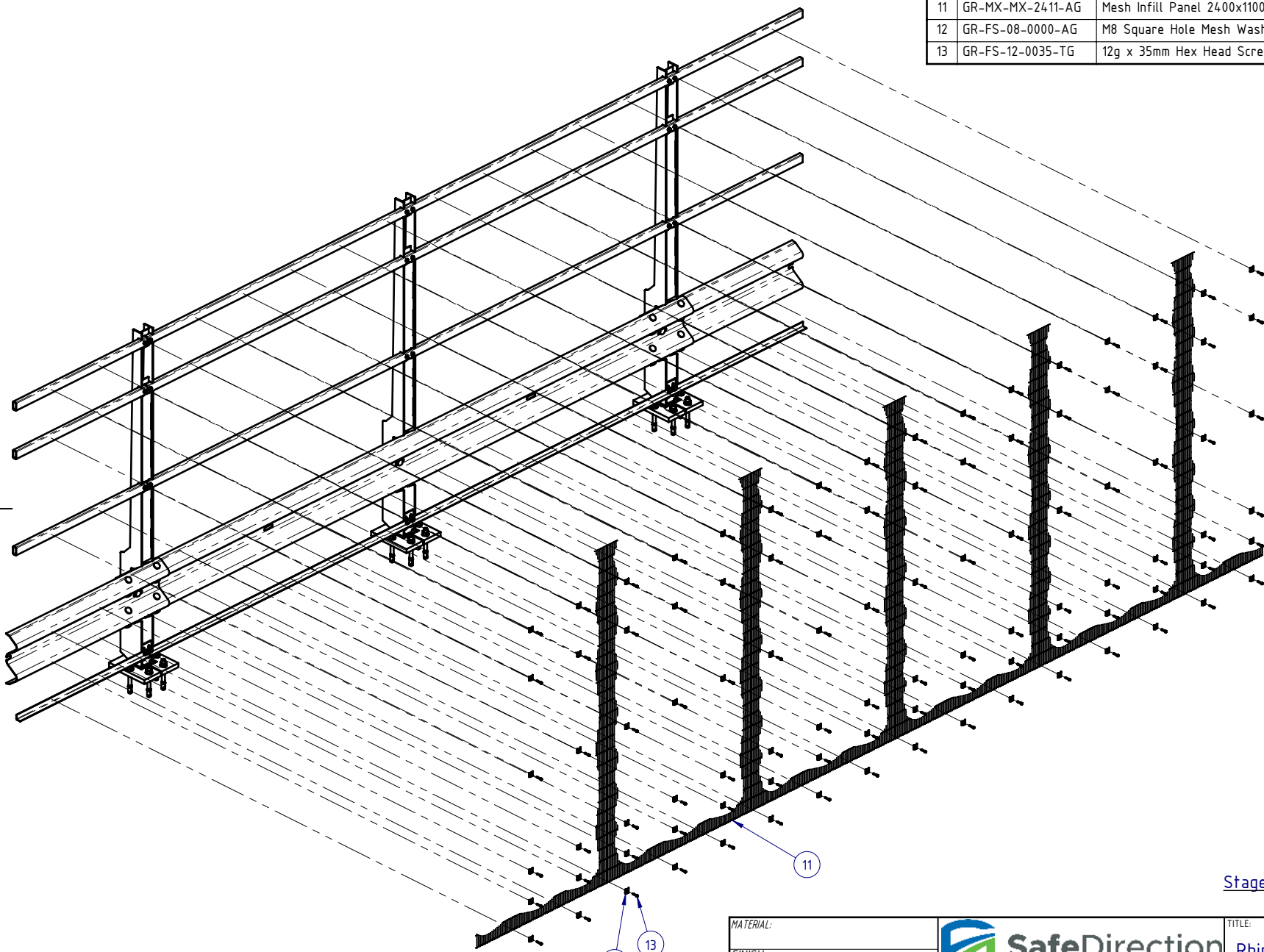
All RHS & Angle Mesh Support Rails MUST be installed with the butt-joint located at centre of Post, and fixed to Post with 2 bolts at all Post locations.




Stage 2b: Mesh Panel Support Elements Assembly

MATERIAL:			 <p>SafeDirection CRASH BARRIER SOLUTIONS</p>	TITLE: Carpark Barriers - Rhino-Stop® Screen RhinoStop® Screen Type 4, 2200mm High		
FINISH:				General Arrangement		
STATUS	NAME	DATE	COPYRIGHT: All rights reserved. ABN: 53 156 459 684 These drawings, plans and specifications and the copyright therein are the properties of Safe Direction Pty Ltd, and must not be used, reproduced or copied wholly or in part without written permission.			
DRAWN	W. Rogulski	15/03/2022	DWG NO. SD-CP-06004			
CHK'D	T. Colquhoun	01/04/2022	REVISION: B			
APPV'D	H. Wallace	01/04/2022	SHEET 4 of 7			
U.N.O: TOLERANCES: ±1mm ALL DIMENSIONS ARE IN: mm			THIRD ANGLE PROJECTION			
STATUS: APPROVED			WEIGHT: 240.9kg			
			DO NOT SCALE DRAWING SCALE: 1:30			

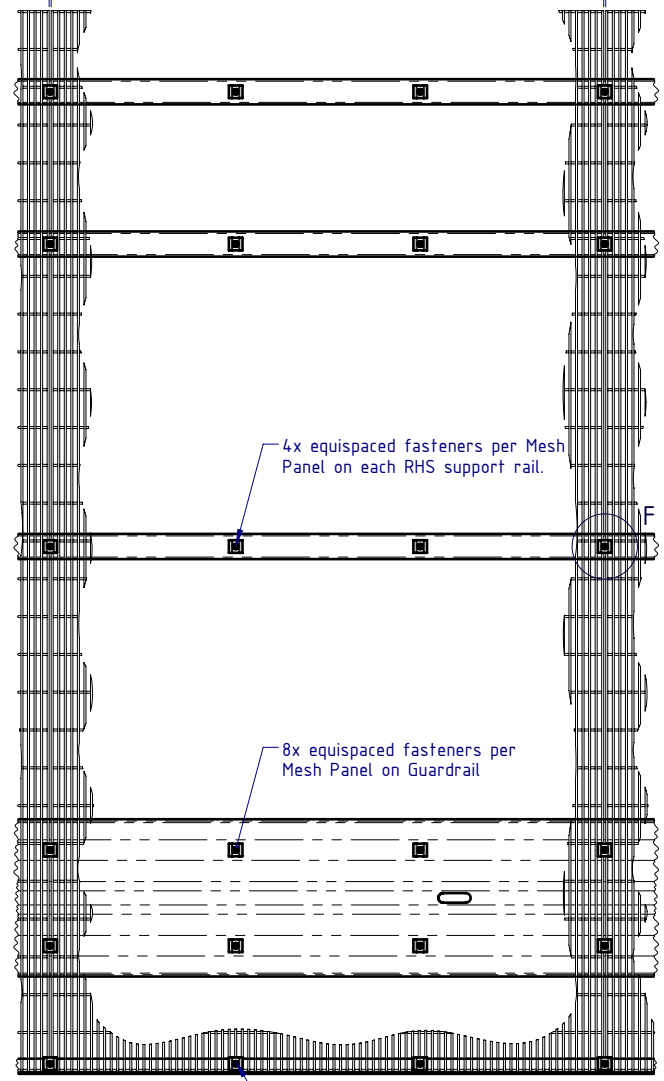
BOM			Weight kg
ITEM NO.	PART NUMBER	DESCRIPTION	
11	GR-MX-MX-2411-AG	Mesh Infill Panel 2400x1100, Ø4 wire, 71x9 aparture	4.4
12	GR-FS-08-0000-AG	M8 Square Hole Mesh Washer	0.0
13	GR-FS-12-0035-TG	12g x 35mm Hex Head Screw Self Tapping, 10 tpi, Class5, B8 Coating	



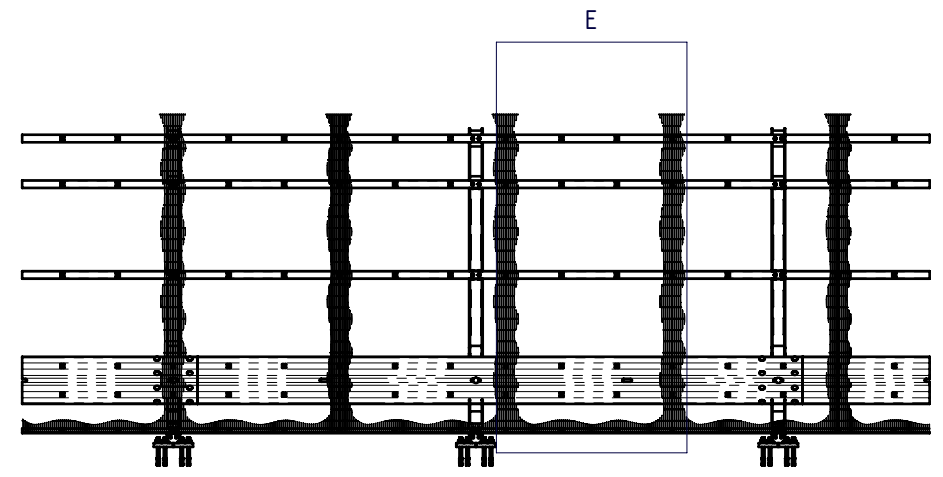
Stage 3a: Mesh Panel Assembly

MATERIAL:		 SafeDirection CRASH BARRIER SOLUTIONS	TITLE: Carpark Barriers - Rhino-Stop® Screen RhinoStop® Screen Type 4, 2200mm High		
FINISH:			General Arrangement		
STATUS	NAME	DATE	DWG NO.	REVISION:	SHEET SIZE
DRAWN	W. Rogulski	15/03/2022	SD-CP-06004	B	A4
CHK'D	T. Colquhoun	01/04/2022			
APPV'D	H. Wallace	01/04/2022			
U.N.O: TOLARANCES: ±1mm ALL DIMENSIONS ARE IN: mm			THIRD ANGLE PROJECTION		
STATUS: APPROVED			WEIGHT: 240.9kg	DO NOT SCALE DRAWING	SCALE: 1:30 SHEET 5 of 7

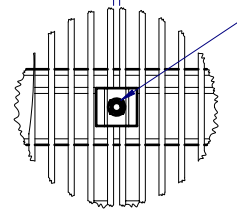
Mesh Panel Mesh Panel Mesh Panel



DETAIL E
SCALE 1:15



Mesh Panel Mesh Panel




DETAIL F
SCALE 1:5

Fastener located between Mesh Panels, with Profiled Mesh Washer lapping both Mesh Panels. TYP

Mesh Panel Assembly Notes:


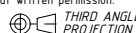
1. Position first Mesh Panel in Portrait orientation, resting on bottom EA support rail.
2. Position adjacent Mesh Panels with a 5-10mm gap to allow for fixing screw between each Panel.
3. Fix Mesh Panels as indicated in Detail E and Detail F views.
4. Each Mesh Panel to be fixed with 24x Self Tapping Screws and Profiled Mesh Washers.

Stage 3b: Mesh Panel Assembly

MATERIAL:			 <p>SafeDirection CRASH BARRIER SOLUTIONS</p>		TITLE: Carpark Barriers - Rhino-Stop® Screen RhinoStop® Screen Type 4, 2200mm High			
FINISH:					General Arrangement			
STATUS	NAME	DATE	<small>COPYRIGHT All rights reserved ABN: 53 156 459 684</small> <small>These drawings, plans and specifications and the copyright therein are the properties of Safe Direction Pty Ltd, and must not be used, reproduced or copied wholly or in part without written permission.</small> <small>U.N.O. TOLERANCES: ±1mm ALL DIMENSIONS ARE IN: mm</small>			DWG NO.	REVISION:	SHEET SIZE
DRAWN	W. Rogulski	15/03/2022				SD-CP-06004	B	A4
CHK'D	T. Colquhoun	01/04/2022						
APPV'D	H. Wallace	01/04/2022				WEIGHT: 240.9kg	DO NOT SCALE DRAWING	SCALE: 1:50
STATUS: APPROVED			Monday, 23 February 2026 12:40:49 PM					



Stage 4: Final Assembly

MATERIAL:			 <p>SafeDirection CRASH BARRIER SOLUTIONS</p>	TITLE: Carpark Barriers - Rhino-Stop® Screen RhinoStop® Screen Type 4, 2200mm High					
FINISH:				General Arrangement					
STATUS	NAME	DATE	<small>COPYRIGHT All rights reserved ABN: 53 156 459 684 These drawings, plans and specifications and the copyright therein are the properties of Safe Direction Pty Ltd, and must not be used, reproduced or copied wholly or in part without written permission.</small>			DWG NO.	REVISION:	SHEET SIZE	
DRAWN	W. Rogulski	15/03/2022	<small>U.N.O. TOLERANCES: ±1mm ALL DIMENSIONS ARE IN: mm</small>			 <p>THIRD ANGLE PROJECTION</p>	SD-CP-06004	B	A4
CHK'D	T. Colquhoun	01/04/2022	<small>STATUS: APPROVED</small>						
APPV'D	H. Wallace	01/04/2022							