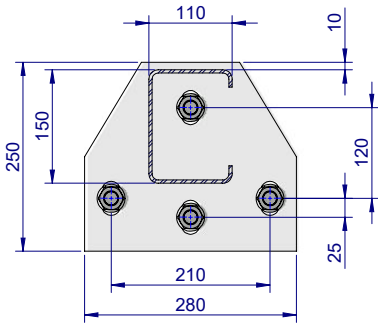


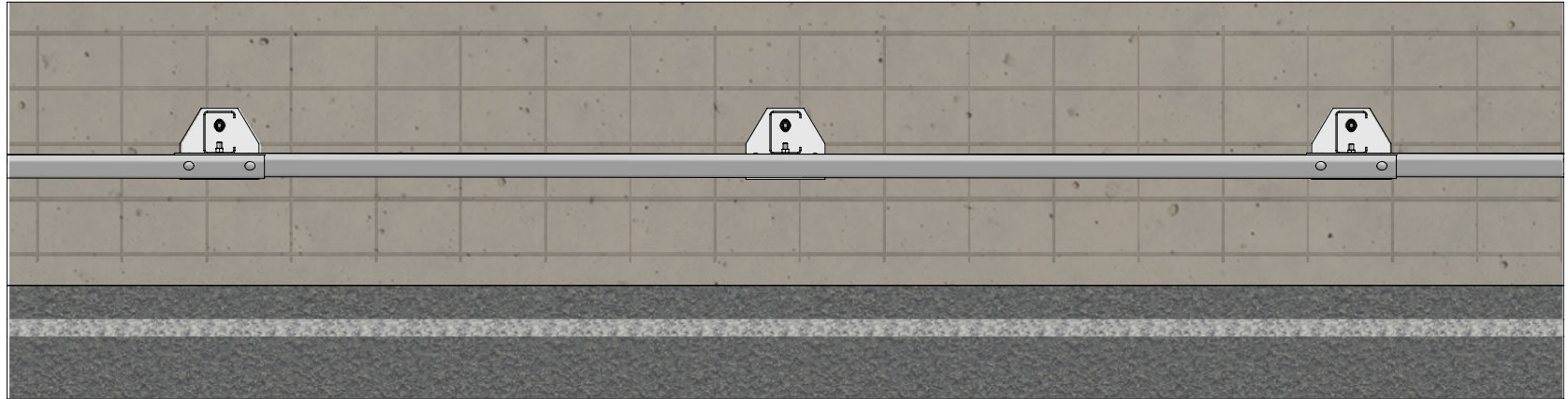
NOTES:

1. The Thrie-Beam guardrail panel is punched at 1m centres to facilitate attachment of BikerShield motorcycle protection barrier.
2. Anchor assembly to comprise one of the following options:
  - a. Four (4) off M20x187mm Galvanised Fischer FBN II (as shown). Minimum embedment depth of 125mm, each anchor torqued to 200Nm.
  - b. Four (4) off M20 Galvanised Rods Class 8.8. Minimum embedment depth of 170mm, secured with Hilti HIT-HY 200-R V3. Each anchor torqued to 150Nm.

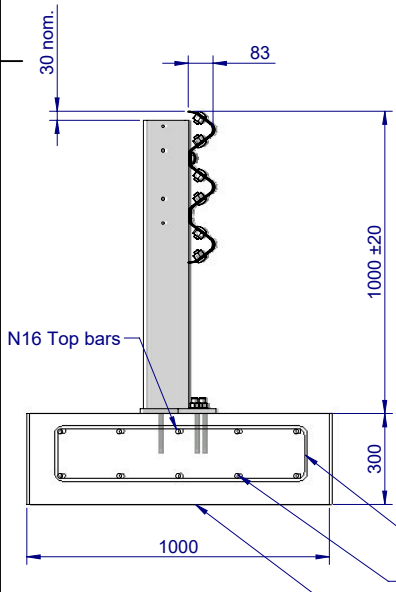
REVISIONS				
REV.	ZONE	DESCRIPTION	DATE	APPV'D
B		REVISION UPDATED		HW
C		Item 1, updated (PG > PB)	11/11/2022	HW
D		M16 Nuts changed from Oversize to Standard	21/02/2023	HW
E		Item 3 changed to GR-FS-16-0050-MG	19/05/2023	HW
F		Updated NOTES, #2. a.	09/04/2025	HW



**SECTION A-A**  
SCALE 1:10  
**POST & BASE PLATE**  
**DETAIL**  
FOOTINGS HIDDEN FOR CLARITY

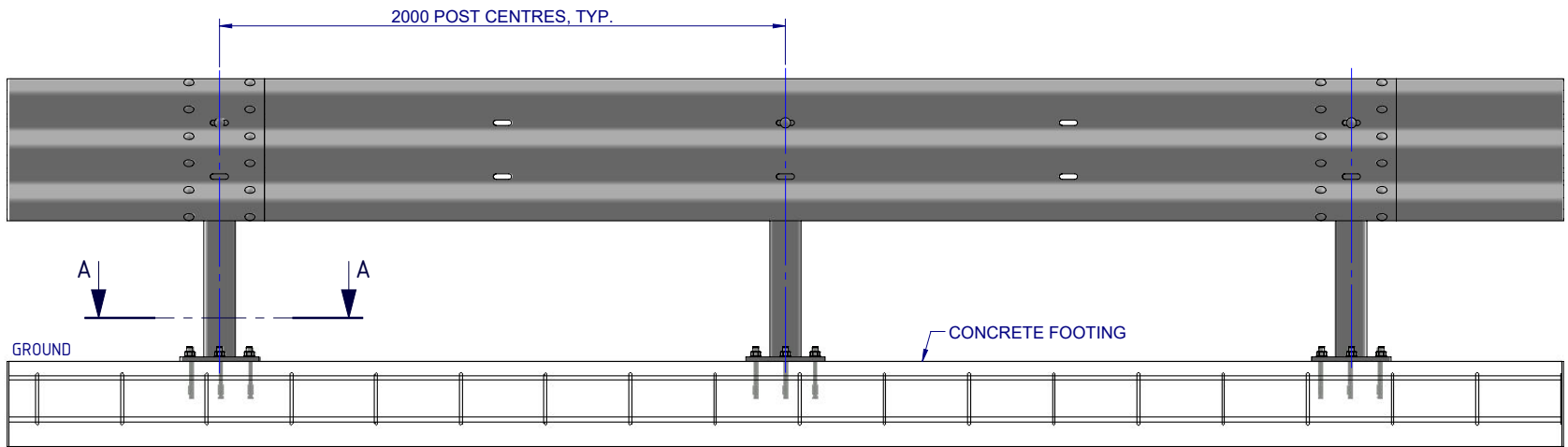


**PLAN VIEW**




**SIDE ELEVATION**  
**TYPICAL CONCRETE STRIP**  
**FOOTING DETAIL**  
(Ref. SD Drawing SD-RB-02018)

**32 MPa CONCRETE**  
Top cover minimum 40mm  
Bottom & side cover minimum 75mm



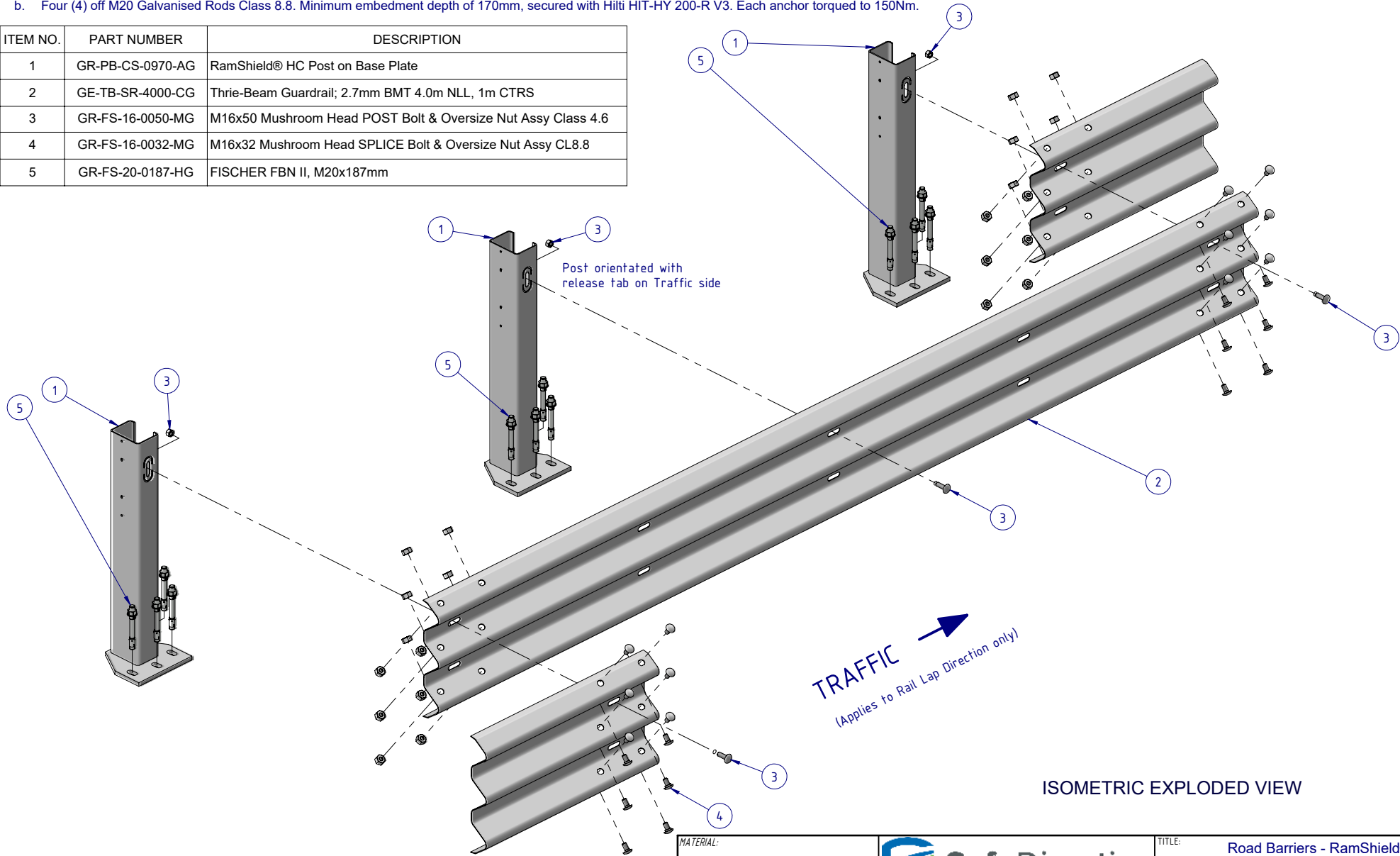
**FRONT ELEVATION**


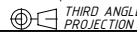
<b>MATERIAL:</b>			 <p><b>SafeDirection</b> CRASH BARRIER SOLUTIONS</p>	<b>TITLE:</b> Road Barriers - RamShield® HC RamShield® HC, 2m Post Ctrs, 970mm Posts on Baseplate, 1m Post Hole Ctrs General Arrangement			
<b>FINISH:</b>				<b>DWG NO. SD-RB-02015</b>			
<b>STATUS</b>	<b>NAME</b>	<b>DATE</b>	<small>COPYRIGHT. All rights reserved. ABN: 53 156 459 684 These drawings, plans and specifications and the copyright therein are the properties of Safe Direction Pty Ltd, and must not be used, reproduced or copied wholly or in part without written permission. U.N.O. TOLERANCES: ±1mm ALL DIMENSIONS ARE IN: mm</small>			<b>REVISION</b>	<b>SHEET SIZE</b>
<b>DRAWN</b>	W. Rogulski	18/07/2022				<b>F</b>	<b>A4</b>
<b>CHK'D</b>	T. Colquhoun	18/07/2022					
<b>APPV'D</b>		18/07/2022					
<b>STATUS:</b> <b>Approved</b>			<b>WEIGHT:</b> 1827.9kg	<b>DO NOT SCALE DRAWING</b>	<b>SCALE:</b> 1:25	<b>SHEET 1 of 3</b>	

NOTES:

1. The Thrie-Beam guardrail panel is punched at 1m centres to facilitate attachment of BikerShield motorcycle protection barrier.
2. Anchor assembly to comprise one of the following options:
  - a. Four (4) off M20x187mm Galvanised Fischer FBN II (as shown). Minimum embedment depth of 125mm, each anchor torqued to 200Nm.
  - b. Four (4) off M20 Galvanised Rods Class 8.8. Minimum embedment depth of 170mm, secured with Hilti HIT-HY 200-R V3. Each anchor torqued to 150Nm.

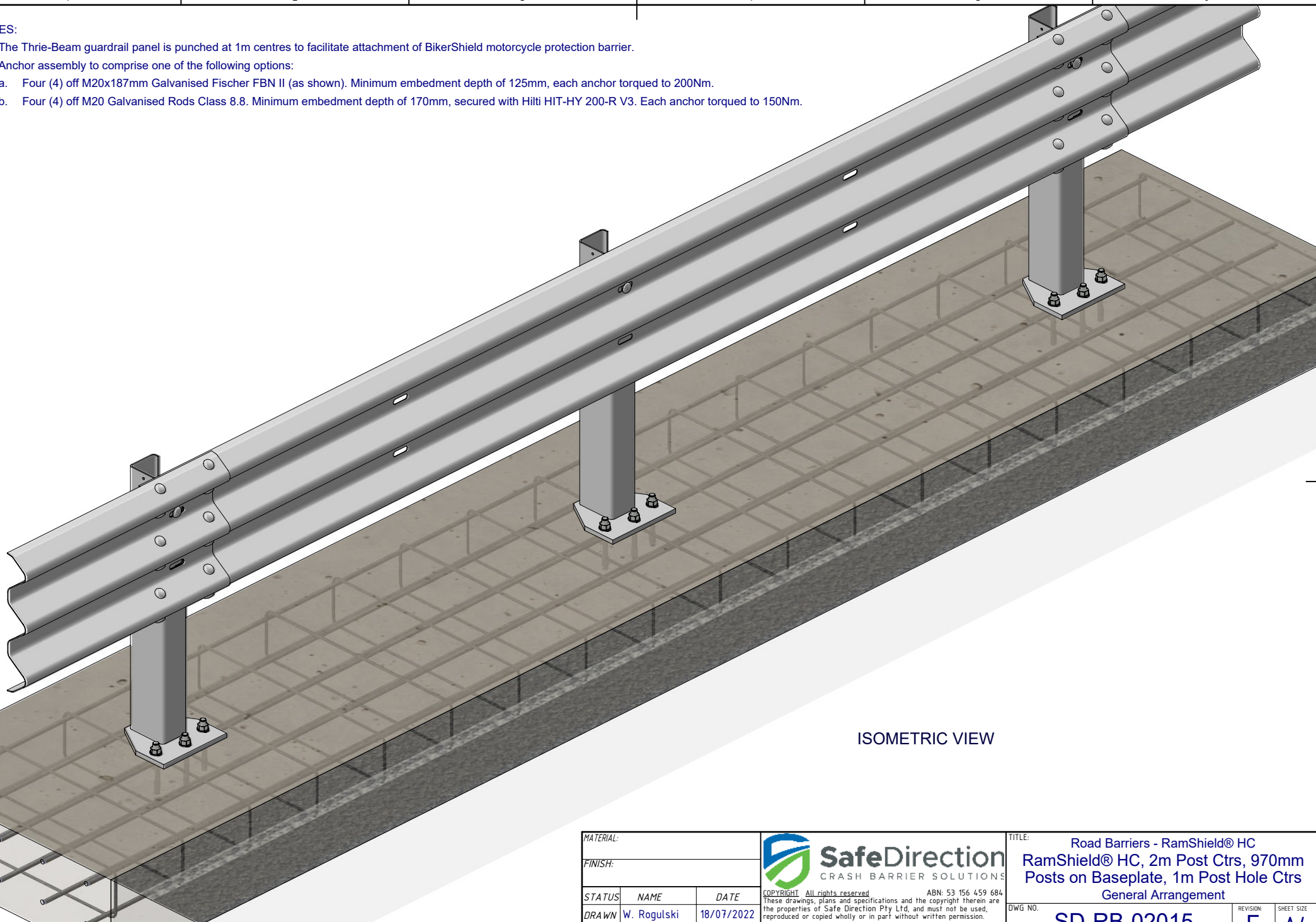
ITEM NO.	PART NUMBER	DESCRIPTION
1	GR-PB-CS-0970-AG	RamShield® HC Post on Base Plate
2	GE-TB-SR-4000-CG	Thrie-Beam Guardrail; 2.7mm BMT 4.0m NLL, 1m CTRS
3	GR-FS-16-0050-MG	M16x50 Mushroom Head POST Bolt & Oversize Nut Assy Class 4.6
4	GR-FS-16-0032-MG	M16x32 Mushroom Head SPLICE Bolt & Oversize Nut Assy CL8.8
5	GR-FS-20-0187-HG	FISCHER FBN II, M20x187mm




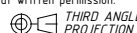
MATERIAL:			 CRASH BARRIER SOLUTIONS <small>COPYRIGHT All rights reserved ABN: 53 156 459 684                  These drawings, plans and specifications and the copyright therein are the properties of Safe Direction Pty Ltd, and must not be used, reproduced or copied wholly or in part without written permission.</small>		TITLE: Road Barriers - RamShield® HC RamShield® HC, 2m Post Ctrs, 970mm Posts on Baseplate, 1m Post Hole Ctrs General Arrangement			
FINISH:					DWG NO. SD-RB-02015	REVISION: F	SHEET SIZE: A4	
STATUS	NAME	DATE	<small>U.N.O. TOLERANCES: ±1mm ALL DIMENSIONS ARE IN: mm</small>  THIRD ANGLE PROJECTION		WEIGHT: 1827.9kg	SCALE: 1:20	SHEET 2 of 3	
DRAWN	W. Rogulski	18/07/2022			STATUS: <b>Approved</b>		DO NOT SCALE DRAWING	
CHK'D	T. Colquhoun	18/07/2022						
APPV'D		18/07/2022						

**NOTES:**

1. The Thrie-Beam guardrail panel is punched at 1m centres to facilitate attachment of BikerShield motorcycle protection barrier.
2. Anchor assembly to comprise one of the following options:
  - a. Four (4) off M20x187mm Galvanised Fischer FBN II (as shown). Minimum embedment depth of 125mm, each anchor torqued to 200Nm.
  - b. Four (4) off M20 Galvanised Rods Class 8.8. Minimum embedment depth of 170mm, secured with Hilti HIT-HY 200-R V3. Each anchor torqued to 150Nm.



ISOMETRIC VIEW

MATERIAL:			 <b>SafeDirection</b> CRASH BARRIER SOLUTIONS		TITLE:			
FINISH:					Road Barriers - RamShield® HC RamShield® HC, 2m Post Ctrs, 970mm Posts on Baseplate, 1m Post Hole Ctrs General Arrangement			
STATUS	NAME	DATE	<small>COPYRIGHT All rights reserved. ABN: 53 156 459 684                  These drawings, plans and specifications and the copyright therein are the properties of Safe Direction Pty Ltd, and must not be used, reproduced or copied wholly or in part without written permission.</small>		DWG NO.	REVISION	SHEET SIZE	
DRAWN	W. Rogulski	18/07/2022	<small>U.N.O. TOLERANCES: ±1mm                  ALL DIMENSIONS ARE IN: mm</small>		 THIRD ANGLE PROJECTION	<b>SD-RB-02015</b>	<b>F</b>	<b>A4</b>
CHK'D	T. Colquhoun	18/07/2022	STATUS: <b>Approved</b>					
APPV'D		18/07/2022			WEIGHT:	DO NOT SCALE DRAWING	SCALE:	SHEET
					1827.9kg	1:15	3 of 3	